

MEMORIAL CITY
REDEVELOPMENT AUTHORITY,
TIRZ No. 17,
City of Houston



Agenda and Agenda Materials
Meeting of the Board of Directors

July 22, 2025

**JOINT MEETING OF THE BOARD OF DIRECTORS OF THE
TIRZ 17 REDEVELOPMENT AUTHORITY/MEMORIAL CITY REDEVELOPMENT AUTHORITY
and TAX REINVESTMENT ZONE NUMBER SEVENTEEN
HOUSTON, TEXAS**

NOTICE is hereby given that the Board of Directors of the TIRZ 17 Redevelopment Authority (aka the Memorial City Redevelopment Authority) and the Tax Reinvestment Zone Number Seventeen, City of Houston, Texas, will hold a joint meeting on **Tuesday, July 22, 2025, at 8:00 a.m.**, at Hawes Hill & Associates LLP, **Spring Branch Conference Room, 9600 Long Point Road, Suite 250, Houston, Texas 77055** open to the public, to consider, discuss, and adopt such orders, resolutions or motions, and take direct actions as may be necessary, convenient, or desirable, with respect to the following matters:

AGENDA

1. Establish quorum and call meeting to order.
2. Receive public comments. (In accordance with City of Houston procedures, a statement of no more than 3 minutes may be made on items of general relevance. However, if a person has spoken regarding a topic within the last 4 meetings, their time will be limited to 1 minute. There will be no yielding of time to another person. State law prohibits the Board Chair or members of the Board from deliberating a topic without an appropriate agenda item being posted in accordance with the Texas Open Meetings Law; therefore, questions or comments will not be addressed. Engaging in verbal attacks or comments intended to insult, abuse, malign or slander any individual shall be cause for termination of time privileges).
3. Approve Minutes from June 24, 2025, meeting.
4. CIP Committee update and recommendations:
 - a. Receive update from HR Green.
 - i. Sports Complex, Detention Basin A.
 - ii. Memorial Drive, Phase 2.
 - iii. W-140 Briar Branch Expansion
 - 1) Pay Application No. 6, W-140 Detention Basin, from Reytec Construction.
 - b. Receive update from The Goodman Corporation.
 - i. W-140 Detention Basin
 - ii. Memorial Drive Phase 2
 - c. Consider Interlocal Agreement with Memorial Management District regarding design and/or construction costs of sidewalks.
 - d. Update regarding City of Houston sidewalk initiative.
5. Receive financial and bookkeeper's report, including approval of payment of invoices, review of investments, and project cash flow reports.
6. Convene in Executive Session pursuant to Section 551.072, Texas Government Code, to deliberate the purchase, exchange, lease or value of real property; and pursuant to Section 551.071, Texas Government Code, to conduct a private consultation with attorney.
7. Reconvene in Open Session and authorize appropriate actions regarding purchase, exchange, lease or value of real property; and consultation with attorney.
 - a. Detention Basin C.
 - i. Ratify engagement of Berg Oliver Associates for ESA Phase 1 services.
 - ii. Ratify HR Green Task Order for phase 1 boundary survey services.
 - iii. Approve HR Green Task Order for phase 2 topographic survey services.
8. Adjourn.



Scott Bean, Zone Administrator

MEMORIAL CITY REDEVELOPMENT AUTHORITY TIRZ No. 17,
HOUSTON, TEXAS

AGENDA MEMORANDUM

TO: Memorial City Redevelopment Authority TIRZ No. 17 Board of Directors
FROM: Executive Director
SUBJECT: Agenda Item Materials

3. Approve Minutes from June 24, 2025, meeting.

**MINUTES OF THE JOINT MEETING OF THE
TIRZ 17 REDEVELOPMENT AUTHORITY/MEMORIAL CITY REDEVELOPMENT AUTHORITY and
TAX REINVESTMENT ZONE NUMBER SEVENTEEN, CITY OF HOUSTON, TEXAS
BOARD OF DIRECTORS**

June 24, 2025

ESTABLISH QUORUM AND CALL MEETING TO ORDER.

The Board of Directors of the TIRZ 17 Redevelopment Authority/Memorial City Redevelopment Authority and Tax Reinvestment Zone Number Seventeen, City of Houston, Texas, held a regular joint meeting at Hawes Hill & Associates LLP, 9600 Long Point Road, Spring Branch District Conference Room, Suite 250, Houston, Texas 77055, open to the public on Tuesday, June 24, 2025, at 8:00 a.m., and the roll was called of the duly appointed members of the Board, to-wit:

Position 1 – Andy Iversen

Position 2 – John Rickel, *Vice-Chair*

Position 3 – David P. Durham, *Secretary*

Position 4 – Ann T. Givens, *Chair*

Position 5 – Zachary R. Hodges, *Asst. Secretary*

Position 6 – Brad Freels

Position 7 – Dan Moody III

and all of the above were present, with the exception of Directors Rickel, Givens, and Moody III, thus constituting a quorum. Also present were Scott Bean, Naina Magon and Linda Clayton, Hawes Hill & Associates, LLP; Alia Vinson and Rachel Beeton, Allen Boone Humphries Robinson, LLP; and Jennifer Landreville, ETI Bookkeeping Services. Others attending the meeting were Andrew Busker, COH - Economic Development Dept.; Alan Roman, District A; Gerardo Barrera, City of Bunker Hill; Muhammad Ali and Derek St. John, HR Green; Jim Webb, The Goodman Corporation; Drew Masterson and Kristin Blomquist, Masterson Advisors; Bruce Nichols; and Lois Myers. Secretary Durham called the meeting to order at 8:00 a.m.

RECEIVE PUBLIC COMMENTS.

There were no public comments.

APPROVE MINUTES FROM MAY 27, 2025, MEETING.

Upon a motion made by Director Iversen, and seconded by Director Freels, the Board voted unanimously to approve the Minutes of the May 27, 2025, Board meeting, as presented.

CIP COMMITTEE UPDATE AND RECOMMENDATIONS:

a. Receive update from HR Green.

A copy of HR Green's progress report is included in the Board materials for review.

i. Sports Complex, Detention Basin A.

Mr. St. John reported the project is advancing. He reported SBISD and Stantec met on June 2 focusing on technical issues relating to utilities for future school, structural load and maintenance access. No action from the Board was required.

ii. Memorial Drive, Phase 2.

Mr. Ali reported HR Green was selected by the City of Bunker Hill as the engineer for the Bunker Hill City section of the project. He reported there will be two separate construction contracts for Phase 2, one with the City of Bunker Hill and the other with Memorial City RA. No action from the Board was required.

iii. W-140 Briar Branch Expansion.

Mr. Ali provided an update on the W-140 Briar Branch expansion project, a copy of the status report is included in the Board materials.

1) Pay Application No. 5, W-140 Detention Basin, from Reytec Construction.

Mr. Ali reviewed Pay Application No. 5, W-140 Detention Basin, from Reytec Construction in the amount of \$910,774.50. He reported he has reviewed the pay application and concurs with the amount and quantities and is recommending for approval. He reported Goodman Corporation has reviewed the pay estimate and has determined all items are in compliance and the Authority may draw down 80% of the allocated costs from the EPA grant. Upon a motion made by Director Freels, and seconded by Director Iversen, the Board voted unanimously to approve Pay Application No. 5, W-140 Detention Basin, from Reytec Construction in the amount of \$910,774.50, as presented.

b. Receive update from The Goodman Corporation.

A copy of Goodman Corporation's status report is included in the Board materials.

i. W-140 Detention Basin.

Mr. Webb provided an update on the EPA Grant disbursements for the W140 Detention Basin project. He reported the third and fourth draw for pay applications 3 and 4 are pending and Goodman will be submitting pay application number 5. No action from the Board was required.

ii. Memorial Drive Phase 2.

Mr. Webb reported the HUD grant has been executed for Memorial Drive Phase 2 project. He provided an update on the congressional earmark submission to Representative Hunt's office. No action from the Board was required.

c. Discuss and consider request from Memorial Management District regarding design and/or construction costs of sidewalks; and take appropriate action.

Director Durham reported a request from Memorial Management District was received to contribute towards the District's design and/or construction costs of a project consisting of three (3) sidewalks: (1) West Bough Rd; (2) 10500 block of Town & Country Way; and (3) 700 block of Town & Country Blvd. After full discussion, a motion was made by Director Hodges and seconded by Director Iversen to participate in the project. Directors Iversen, Durham, and Hodges voted to participate. Director Freels abstained. The motion passed. Upon a motion made by Director Durham, and seconded by Director Hodges, Directors Iversen, Durham and Hodges voted to contribute \$30,000 to project costs and requested an Interlocal Agreement between the District and Authority be brought back to the Board for consideration. Director Freels abstained. The motion passed.

RECEIVE FINANCIAL AND BOOKKEEPER'S REPORT, INCLUDING APPROVAL OF PAYMENT OF INVOICES, REVIEW OF INVESTMENTS, AND PROJECT CASH FLOW REPORTS.

a. Approve City of Houston Municipal Services Fee invoice, payable upon receipt of tax increment.

Ms. Landreville presented the Bookkeeper's Report and reviewed the invoices for payment, included in the Board materials. Upon a motion made by Director Hodges, and seconded by Director Iversen,

the Board voted unanimously to accept the Bookkeeper's Report and approved payment of invoices, including authorization to pay the City of Houston Municipal Services Fee invoice upon receipt of the tax increment from the City.

UPDATE ON SERIES 2025 TAX INCREMENT CONTRACT REVENUE BONDS.

Ms. Blomquist provided an update regarding the Series 2025 Tax Increment Contract Revenue Bonds. A handout was provided summarizing the pricing, rating, etc., a copy is attached hereto as Exhibit A. She reported the issuance is in the amount of \$28,100,000 and the proceeds the Authority will receive for projects is \$27,666,935. Ms. Vinson reported the transcript has been submitted to the Attorney General's office for approval. She reported the Attorney General will need to approve before the sale. No action from the Board was required.

RECEIVE AND CONSIDER FY2026 BUDGET.

Mr. Bean reviewed the FY2026 Budget, included in the Board materials. He reported the CIP Committee has reviewed the budget and is recommending it for approval. Upon a motion made by Director Hodges, and seconded by Director Freels, the Board voted unanimously to approve the FY2026 Budget.

CONVENE IN EXECUTIVE SESSION PURSUANT TO SECTION 551.072, TEXAS GOVERNMENT CODE TO DELIBERATE THE PURCHASE, EXCHANGE, LEASE OR VALUE OF REAL PROPERTY; AND PURSUANT TO SECTION 551.071, TEXAS GOVERNMENT CODE, TO CONDUCT A PRIVATE CONSULTATION WITH ATTORNEY.

The Board convened in Executive Session pursuant to Section 551.072, Texas Government Code, to deliberate the purchase, exchange, lease, or value of real property at 8:25 a.m.

RECONVENE IN OPEN SESSION AND AUTHORIZE APPROPRIATE ACTIONS REGARDING PURCHASE, EXCHANGE, LEASE OR VALUE OF REAL PROPERTY; AND CONSULTATION WITH ATTORNEY.

The Board convened in Open Session at 8:35 a.m. Upon reconvening no action was taken.

ADJOURN.

There being no further business to come before the Board, the meeting was adjourned at 8:35 a.m.

Secretary

List of Exhibits:

- A. Summary of Tax Increment Contract Tax Revenue Bonds, Series 2025

MEMORIAL CITY REDEVELOPMENT AUTHORITY TIRZ No. 17,
HOUSTON, TEXAS

AGENDA MEMORANDUM

TO: Memorial City Redevelopment Authority TIRZ No. 17 Board of Directors

FROM: Executive Director

SUBJECT: Agenda Item Materials

4. CIP Committee update and recommendations:

- a. Receive update from HR Green.
 - i. Sports Complex, Detention Basin A.
 - ii. Memorial Drive, Phase 2.
 - iii. W-140 Briar Branch Expansion
 - b. Pay Application No. 6, W-140 Detention Basin, from Reytec Construction.
- b. Receive update from The Goodman Corporation.
 - i. W-140 Detention Basin
 - ii. Memorial Drive Phase 2
- c. Consider Interlocal Agreement with Memorial Management District regarding design and/or construction costs of sidewalks.
- d. Update regarding City of Houston sidewalk initiative.

PROGRESS REPORT

JULY 2025

MEMORIAL CITY REDEVELOPMENT AUTHORITY/TIRZ 17



Planning/Preliminary:

- City of Houston / HR Green Sports Complex Support:
 - 2nd meeting with SBISD and Stantec on 6/26 went well. Focused on key technical issues.
 - Utilities for future school
 - Structural load for school
 - Maintenance access for vault
 - SBISD Coordination: Targeting the following
 - September – Board Workshop presentation
 - October – Board meeting vote opportunity, assuming the workshop presentation goes well
 - SBISD initiated coordination with SBMSA
 - City and HR Green are preparing to initiate coordination with SBMSA
 - HCFCD Funding:
 - Interlocal between HCFCD and City of Houston is started
 - Key Design Issues
 - Benefit Evaluation and basin volume sensitivity
 - Sanitary sewer conflict resolution
 - Structural design
 - In parallel, developing roadway and trunkline plan sheets
- Memorial Drive – Phase II:
 - Gauge awarded contract (TIRZ 17 and City of Bunker Hill)
 - Submitted scope/fee proposals
 - Targeting August 15th, 2025, City Council Meeting for approval

PROGRESS REPORT— JULY 2025

BRIAR BRANCH STORM WATER DETENTION BASIN EXPANSION AND STORM SEWER IMPROVEMENTS

WBS No. N-T7000-0021-3



PROJECT LOCATION

Storm sewer and roadway improvements:

Westview Drive, Cedardale Dr, Windhover Ln, and Demaret Ln

Basin improvements:

At existing basin between Bunker Hill Rd and Blalock Rd.

FUNDING PARTNERS

EPA: \$3,394,000

PROJECT OBJECTIVES & DESCRIPTION

Reduce risk of flooding in neighborhood by:

- Installing reinforced concrete boxes to draw water more quickly away from the homes.
- Mitigating flow increases by deepening the detention basin.

ASSOCIATED IMPROVEMENTS

- Reinforced concrete boxes and basin deepening
- Half-road replacement
- Mill and overlay roadway (side without boxes)
- Sidewalk and ADA-compliant wheelchair ramps
- Waterline replacements
- Driveway replacement
- Lift station
- Subsurface barrier wall

EXISTING BASIN



Existing Roadway



PROJECT STATUS

- Completed 90% of detention basin excavation
- Completed liner plate shaft installation for wet well
- Completed wet well concrete base
- Completed installation for 4'x4' RCBs to wet well
- Began installation of backslope interceptor pipes

NEXT STEPS

- Continue wet well installation
- Continue basin excavation and offsite disposal
- Install basin access road
- Install concrete pilot channels



Schumacher Lane Typical Section

BASIN DETENTION VOLUME

Pre-project volume: 44 ac-ft
Added volume: 35.1 ac-ft*
Total: 79.2 ac-ft

*80% capacity increase

PROGRESS REPORT— JULY 2025

BRIAR BRANCH STORM WATER DETENTION BASIN EXPANSION AND STORM SEWER IMPROVEMENTS



CONSTRUCTION TIME

Original Contract Time: 470 Days
Mobilization Date: Jan 6th, 2025

CONTACT INFORMATION

Construction Manager:
HR Green
11750 Katy Freeway, Suite 400
Houston, TX 77079



CONTRACTOR

Reytec Construction Resources, Inc.
1901 Hollister St.
Houston, TX 77080



PAYMENT ESTIMATES

Original Contract Amount	\$13,797,688.00
Change Order Amount to Date	\$0.00
Current Contract Amount	\$13,797,688.00
Previous Payments	\$5,333,994.45
Current Payment Due (Minus Retainage)	\$379,406.25
Contract Completion Date	April 20, 2026
Balance Remaining	\$7,783,582.00

PROGRESS PHOTOS



Excavation



Concrete Pilot Channel



Wet Well Concrete Pour



Storm Sewer Trench Excavation



▶ 11750 Katy Freeway | Suite 400
Houston, TX 77079
Main 832.318.8800 + **Fax** 713.965.0044
TBPE Firm F-11278
▶ HRGREEN.COM

July 11, 2025

Ms. Ann Givens, Chair of the Board
Memorial City Redevelopment Authority/TIRZ 17
9610 Long Point, Suite 150
Houston, TX 77055

RE: Briar Branch (W140-01-00) Storm Water Detention Basin Expansion and Storm Sewer Improvements
WBS No. N-T17000-0021-3
Reytec Construction Resources, Inc. Payment No. 06

Dear Ms. Givens,

Reytec Construction Resources, Inc. (Reytec) has submitted estimate No. 06 in the amount of \$375,406.25 for construction services rendered through June 30, 2025. Based on our review, Reytec has complied with all requirements stated in the estimate and we recommend payment of **\$379,406.25** to Reytec.

The following billing information is to be used for payment:

Reytec Construction Resources, Inc.
1901 Hollister St.
Houston, TX 77080

If you have any questions or require additional information, please feel free to contact me at (832) 318-8800.

Sincerely,

HR GREEN, INC.

A blue ink handwritten signature, appearing to be 'MA', written over a white background.

Muhammad Ali, PE
Project Manager

Enclosures: Reytec Pay Est. No. 06

To: Memorial City Redevelopment Authority
Attn: Ann Givens, Board Chair
From: Kirk Myers, PE, PMP
Subject: W-140 Detention Basin Improvements Project
EPA Grant 02F25701 - 1
Construction Contract Pay Estimate #6
Date: July 10, 2025

This memo serves as notification of approval of Pay Estimate #6 for the subject Project. The pay application submitted by Reytec Construction Resources, Inc., reflects work completed during the period from 6/1/2025 to 6/30/2025. The Goodman Corporation (TGC) has reviewed the pay application, certified payrolls, and supporting documents and has determined all items are in compliance with the plans, specifications, and contract conditions. TGC hereby recommends payment of \$379,406.25 to Reytec Construction pursuant to the executed contract.

The following billing information is to be used for payment:

Reytec Construction Resources, Inc.
1901 Hollister St
Houston, TX 77080

The Authority may draw down 80% of the allocated costs (detention basin and roadway), or \$27,200.00, from the EPA funding allocated to this project in accordance with the grant agreement. The Authority share is \$352,206.25. The total allocations of Federal and Authority shares and summary of work completed this period are provided on the following page. TGC requests copies of the approved pay certificate and proof of payment for the grant reimbursement request.

Please feel free to contact me with any questions or requests for additional information at (713) 714-3560 or kmyers@thegoodmancorp.com.

Encl:
Certified Pay Estimate Packet
DBE Contractor Payment Report

C:
Gauge Engineering, Attn: David Greaney, PE, Project Manager
Hawes-Hill & Associates, Records & Compliance, Attn: Linda Clayton

Pay Estimate (Period)	Payment Due Contractor	Federal Share (EPA Grant 02F25701-1)	Authority Share
#1 (1/1/25-1/31/25)	\$390,503.20	\$3,458.00	\$387,045.20
#2 (2/1/25-2/28/25)	\$3,450,290.75	\$2,394,000.00	\$1,056,290.75
#3 (3/1/25-3/30/25)	\$149,068.68	\$55,178.00	\$93,890.68
#4 (4/1/25-4/30/25)	\$433,357.32	\$287,976.00	\$145,381.32
#5 (5/1/25-5/31/25)	\$910,774.50	\$625,776.00	\$284,998.50
#6 (6/1/25-6/30/25)	\$379,406.25	\$27,200.00	\$352,206.25
Running Totals	\$5,713,400.70	\$3,393,588.00	\$2,319,812.70

The amount of the EPA grant for this project is \$3,394,000.00. The grant balance, including this payment, is \$412.00. The share amounts above reflect the appropriate eligible work items as detailed in the project budget in the grant agreement. The Automated Standard Application for Payments (ASAP) request will be submitted upon receipt of the Authority's proof of payment.

The work completed during this period corresponds to approximately 2.9% of the bid schedule, bringing the project earned value to 43.6%. Elapsed contract time is 168 of 470 calendar days (35.7%). There have been no approved changes to the contract. The summary of completed work for the stated period is provided in the following table.

Item Category	Item Description	% Complete this Period	Total % Completed
Traffic Control	Traffic Control and Regulation	7.46%	44.73%
Detention Basin	24" Aluminized Steel Type 2 CMP	0.67%	83.10%
	5" Concrete Pilot Channel Care and Control of Water		
Pump Station	4'x4' Precast RCB	10.88%	18.02%
	Structural Wet Well Trench Safety		
Extra Unit Price	Temporary Basin Pumping	4.88%	29.27%

Estimate No. 5
Cut off Date 06/30/25
Estimate Date 07/05/25

Memorial City Redevelopment Authority / TIRZ 17
Estimate and Certificate for Payment Unit Price Work



Project Name : W140-01-00 Briar Branch Storm Water Detention Basin Expansion and Storm Sewer Improvements
Contractor Name : Reytec Construction Resources, Inc.
Address : 1901 Hollister St. Houston, TX 77080

WBS No. N-T17000-0021-3

Contract Date : 10/15/2024
Start Date : 1/6/2025
Current Contract Completion Date : 4/20/2026
Substantial Completion Date :
Percentage By Time : 37.23%
Date Insurance Exp. : 9/30/2025

In Place : 43.59%
Drug Policy Due Date: N/A

M/SBE : 21.43%
Current M/SBE : 0.00%
WBE : 6.78%
Current WBE : 0.00%

CONTRACT TIME IN CALENDAR DAYS

Original Contract Time : 470
Approved Extensions : 0
Total Contract Time : 470
Days Used to Date : 175
Days Remaining to Date : 295
Schedule Update Received :

CONTRACT AMOUNT TO DATE :

- 1- Original Contract Amount
- 2- Approved Change Orders

\$13,797,688.00

No.	Date	Ext.Days	Amount

Total Approved Extensions

0

Total Change Orders to Date

\$0.00

- 3- Approved Work Change Directives

No.	Date	Ext.Days	Amount

Total Pending Work Change Directives to Date

\$0.00

TOTAL CONTRACT AMOUNT (excludes WCDs)

\$13,797,688.00

A. EARNINGS TO DATE

- 1- Work Completed to Date 43.59% Complete
- 2- Material Stored on Site \$0.00
- 3- Material Stored in Place \$0.00
- 4- Balance-Materials Accepted Not in Place \$0.00 @ 85%
- 5- Work Change Directives - In Place \$0.00

Current Month Billing

\$399,375.00

\$6,014,106.00

TOTAL EARNINGS TO DATE \$6,014,106.00

B. DEDUCTIONS

- 1- Retainage 5% Of \$6,014,106.00 \$300,705.30
- 2- Retainage Release 0% Of \$6,014,106.00 \$0.00
- 3- Total Retainage \$300,705.30
- 4- Liquidated Damages 0.00 Days @ \$2,000.00 \$0.00
- 5- Assessments \$0.00
- 6- Inspector Overtime Costs \$0.00

TOTAL DEDUCTIONS \$300,705.30

C. AMOUNT DUE THIS PERIOD

- 1- Total Earnings to Date \$6,014,106.00
- 2- Total Deductions \$300,705.30
- 3- Total Payments Due \$5,713,400.70
- 4- Less Previous Payments \$5,333,994.45
- 5- Restoration Adjustment \$0.00

TOTAL AMOUNT DUE CONTRACTOR THIS DATE \$379,406.25

BALANCE REMAINING \$7,783,582.00

Prepared By David G. Greaney, P.E. 7/11/2025
Date

Reviewed By Muhammad Ali, P.E. 7/11/2025
Date

Approved By: TIRZ 17
Date

MEMORIAL CITY REDEVELOPMENT AUTHORITY/TIR217
W140-01-00 BRIAR BRANCH STORM WATER DETENTION BASIN EXPANSION
AND STORM SEWER IMPROVEMENTS WBS NO. N-T17000-0021-3

Contractor:
Reytec Construction Resources, Inc
1901 Hollister St.
Houston, Texas 77080

Todays Date: 7/3/2025
Pay Period: 06/01/2025 - 06/30/2025
Pay Estimate No. 6
Rain Days This Month

Item	Item Description	UOM	Est Unit Quantity	Unit Price	Contract Amount	Previous Quantities	This Month Quantities	To Date Quantities	This Month Billing	Total Amount Billed	% Complete	Explanation
General Items												
1	MOBILIZATION	LS	1	\$ 750,000.00	\$ 750,000.00	1.00		1.00	\$ -	\$ 750,000.00	100%	
2	CLEARING AND GRUBBING	AC	6	\$ 2,500.00	\$ 15,000.00	6.00		6.00	\$ -	\$ 15,000.00	100%	
3	UNIFORMED PEACE OFFICERS (MID BID \$55-HR)	HR	1000	\$ 55.00	\$ 55,000.00	19.00		19.00	\$ -	\$ 1,045.00	2%	
4	12" PIPE GATE	EA	2	\$ 5,000.00	\$ 10,000.00	0.00		0.00	\$ -	\$ -	0%	
Demolition Items												
5	REMOVE EXIST ASPHAT PAVEMENT BY MILLING	SY	1986	\$ 5.00	\$ 9,930.00	0.00		0.00	\$ -	\$ -	0%	
6	REMOVE AND DISPOSE OF REINFORCED CONC PAV W/ W/O ASPHALT	SY	3785	\$ 12.00	\$ 45,420.00	0.00		0.00	\$ -	\$ -	0%	
7	REMOVE AND DISPOSE OF EXIST CONC CURB	LF	2200	\$ 1.50	\$ 3,300.00	0.00		0.00	\$ -	\$ -	0%	
8	REMOVE AND DISPOSE OF CONC DRIVEWAYS	SY	424	\$ 12.00	\$ 5,088.00	0.00		0.00	\$ -	\$ -	0%	
9	REMOVE AND DISPOSE OF CONC SIDEWALKS & RAMPS	SY	61	\$ 15.00	\$ 915.00	0.00		0.00	\$ -	\$ -	0%	
10	REMOVE AND DISPOSE OF EXIST STM SWR PIPE	LF	670	\$ 20.00	\$ 13,400.00	80.00		80.00	\$ -	\$ 1,600.00	12%	
11	REMOVE AND DISPOSE OF EXIST MANHOLES	EA	7	\$ 850.00	\$ 5,950.00	1.00		1.00	\$ -	\$ 850.00	14%	
12	REMOVE AND DISPOSE OF EXIST INLETS	EA	6	\$ 850.00	\$ 5,100.00	0.00		0.00	\$ -	\$ -	0%	
13	CUT AND PLUG PIPES	EA	3	\$ 2,000.00	\$ 6,000.00	0.00		0.00	\$ -	\$ -	0%	
Traffic Control Items												
14	TRAFFIC CONTROL AND REGULATION	LS	1	\$ 112,500.00	\$ 112,500.00	0.50	0.10	0.60	\$ 11,250.00	\$ 67,500.00	60%	
15	FURNISH AND INSTALLING PRECAST LPCB TYP 1&2	LF	560	\$ 30.00	\$ 16,800.00	0.00		0.00	\$ -	\$ -	0%	
16	MOVE PRECAST LPCB TYP 1&2	LF	880	\$ 15.00	\$ 13,200.00	0.00		0.00	\$ -	\$ -	0%	
17	REMOVE PRECAST LPCB TYP 1&2	LF	560	\$ 15.00	\$ 8,400.00	0.00		0.00	\$ -	\$ -	0%	
Roadway Items												
18	HYDRATED LIME (SLURRY) OR COMMERCIAL LIME SLURRY	TON	97	\$ 365.00	\$ 35,405.00	0.00		0.00	\$ -	\$ -	0%	
19	8" LIME TREATED STABILIZED SUBGRADE	SY	4388	\$ 8.50	\$ 37,298.00	0.00		0.00	\$ -	\$ -	0%	
20	REINFORCED CONCRETE PAVEMENT (6" DEPTH)	SY	1534	\$ 80.00	\$ 122,720.00	0.00		0.00	\$ -	\$ -	0%	
21	REINFORCED CONCRETE PAVEMENT (6" DEPTH) HES	SY	1041	\$ 100.00	\$ 104,100.00	0.00		0.00	\$ -	\$ -	0%	
22	REINFORCED CONCRETE PAVEMENT (11" DEPTH)	SY	534	\$ 115.00	\$ 61,410.00	0.00		0.00	\$ -	\$ -	0%	
23	REINFORCED CONCRETE PAVEMENT (11" DEPTH) HES	SY	870	\$ 130.00	\$ 113,100.00	0.00		0.00	\$ -	\$ -	0%	
24	TYPE D HOT MIX ASPHALTIC CONC PAV. (1-1/2") INCL. TACKCOAT	TON	362	\$ 250.00	\$ 90,500.00	0.00		0.00	\$ -	\$ -	0%	
25	REINFORCED CONCRETE SIDEWALK (4-1/2") THICK	SF	152	\$ 25.00	\$ 3,800.00	0.00		0.00	\$ -	\$ -	0%	
26	CONSTRUCT ADA COMPLAINT RAMP	SF	605	\$ 30.00	\$ 18,150.00	0.00		0.00	\$ -	\$ -	0%	
27	6-INCHES CONC DRIVEWAY, INCL. EXCAVATION AND BASE	SF	3287	\$ 12.00	\$ 39,444.00	0.00		0.00	\$ -	\$ -	0%	
28	7-INCH HES CONC DRIVEWAY, INCL. EXCAVATION AND BASE	SF	300	\$ 20.00	\$ 6,000.00	0.00		0.00	\$ -	\$ -	0%	
29	REINFORCED CONCRETE CURB (6")	LF	1810	\$ 5.00	\$ 9,050.00	0.00		0.00	\$ -	\$ -	0%	
30	CONCRETE PAVING HEADER	LF	195	\$ 15.00	\$ 2,925.00	0.00		0.00	\$ -	\$ -	0%	
Pavement Marking Items												
31	THERMOPLASTIC PAVEMENT MARKINGS - (W) (12") (SLD)	LF	132	\$ 5.00	\$ 660.00	0.00		0.00	\$ -	\$ -	0%	
32	THERMOPLASTIC PAVEMENT MARKINGS - (W) (24") (SLD)	LF	65	\$ 10.00	\$ 650.00	0.00		0.00	\$ -	\$ -	0%	
33	RASIED PAVEMENT MARKERS TYPE II (A-A)	EA	34	\$ 10.00	\$ 340.00	0.00		0.00	\$ -	\$ -	0%	
34	THERMOPLASTIC PAVEMENT MARKINGS - (Y)(4") (SLD)	LF	1274	\$ 2.50	\$ 3,185.00	0.00		0.00	\$ -	\$ -	0%	
Drainage Items												
35	BRICK PLUG IN RCB	SF	240	\$ 50.00	\$ 12,000.00	0.00		0.00	\$ -	\$ -	0%	
36	TYP C-1 INLET W/ ONE EXTENSION	EA	13	\$ 6,500.00	\$ 84,500.00	0.00		0.00	\$ -	\$ -	0%	
37	TXDOT TYP C-1 INLET W/ ONE EXTENSION	EA	5	\$ 7,500.00	\$ 37,500.00	0.00		0.00	\$ -	\$ -	0%	
38	TYP C 4-FOOT DIA PRECAST ROUND CONC MANHOLE	EA	3	\$ 9,000.00	\$ 27,000.00	0.00		0.00	\$ -	\$ -	0%	
39	TYP C 4-FOOT DIA PRECAST MANHOLE ON RCB	EA	10	\$ 3,000.00	\$ 30,000.00	0.00		0.00	\$ -	\$ -	0%	
40	DESIGN, FURNISH, AND INSTALL 9"x9" JUNCTION BOX	EA	3	\$ 30,000.00	\$ 90,000.00	0.00		0.00	\$ -	\$ -	0%	
41	DESIGN, FURNISH, AND INSTALL 9"x9" JUNCTION BOX W/ 4"x3" RESTRICTOR	EA	1	\$ 30,000.00	\$ 30,000.00	0.00		0.00	\$ -	\$ -	0%	
42	3-INCH PVC PIPE TO CURB	LF	20	\$ 20.00	\$ 400.00	0.00		0.00	\$ -	\$ -	0%	
43	4-INCH PVC PIPE TO CURB	LF	20	\$ 25.00	\$ 500.00	0.00		0.00	\$ -	\$ -	0%	
44	24-INCH DIA STM SWR BY OPEN CUT	LF	151	\$ 200.00	\$ 30,200.00	0.00		0.00	\$ -	\$ -	0%	
45	30-INCH DIA STM SWR BY OPEN CUT	LF	14	\$ 300.00	\$ 4,200.00	0.00		0.00	\$ -	\$ -	0%	
46	7'x7' RCB BY OPEN CUT	LF	2248	\$ 900.00	\$ 2,023,200.00	0.00		0.00	\$ -	\$ -	0%	
47	7'x5' RCB BY OPEN CUT	LF	40	\$ 1,300.00	\$ 52,000.00	0.00		0.00	\$ -	\$ -	0%	
48	7'x4' RCB BY OPEN CUT	LF	110	\$ 1,250.00	\$ 137,500.00	0.00		0.00	\$ -	\$ -	0%	
49	TRENCH SAFETY SYSTEM	LF	2563	\$ 5.00	\$ 12,815.00	0.00		0.00	\$ -	\$ -	0%	
SWPPP Items												
50	INLET PROTECTION BARRIER	LF	78	\$ 25.00	\$ 1,950.00	78.00		78.00	\$ -	\$ 1,950.00	100%	
51	BAGGED GRAVEL BARRIER	LF	369	\$ 25.00	\$ 9,225.00	0.00		0.00	\$ -	\$ -	0%	
52	REINFORCED SILT FENCE	LF	2059	\$ 2.00	\$ 4,118.00	2059.00		2059.00	\$ -	\$ 4,118.00	100%	
53	ROCK FILTER DAME - TYPE 2	LF	109	\$ 50.00	\$ 5,450.00	40.00		40.00	\$ -	\$ 2,000.00	37%	
54	STABILIZED CONSTRUCTION ACCESS	SY	110	\$ 35.00	\$ 3,850.00	66.00		66.00	\$ -	\$ 2,310.00	60%	
Water Line Items												
55	HAND DIG FOR WATER LINE INSTALLATION	LS	1	\$ 5,000.00	\$ 5,000.00	1.00		1.00	\$ -	\$ 5,000.00	100%	
56	OFFSET OF EXIST 1-1/2" TO 2" DIA SERVICE LINE, LONG SIDE	EA	20	\$ 4,000.00	\$ 80,000.00	0.00		0.00	\$ -	\$ -	0%	
57	REMOVE OF EXIST WATER LINE (ALL SIZES)	LF	460	\$ 12.00	\$ 5,520.00	0.00		0.00	\$ -	\$ -	0%	
58	TRENCH SAFETY SYSTEM	LF	395	\$ 10.00	\$ 3,950.00	263.00		263.00	\$ -	\$ 2,630.00	67%	
59	WTR MAIN PIPE (PVC) 8-INCH, BY OPEN CUT	LF	207	\$ 250.00	\$ 51,750.00	167.00		167.00	\$ -	\$ 41,750.00	81%	
60	WTR MAIN PIPE (PVC) 12-INCH, BY OPEN CUT	LF	188	\$ 350.00	\$ 65,800.00	96.00		96.00	\$ -	\$ 33,600.00	51%	
61	FIRE HYDRANT BRANCH	LF	5	\$ 250.00	\$ 1,250.00	1.00		1.00	\$ -	\$ 250.00	20%	
62	FIRE HYDRANT ASSEMBLY	EA	1	\$ 15,000.00	\$ 15,000.00	1.00		1.00	\$ -	\$ 15,000.00	100%	
63	REMOVING AND SALVAGING FIRE HYDRANT	EA	1	\$ 550.00	\$ 550.00	1.00		1.00	\$ -	\$ 550.00	100%	
64	CUT, PLUG, & ABANDON (6 IN)	EA	7	\$ 1,250.00	\$ 8,750.00	1.00		1.00	\$ -	\$ 1,250.00	14%	
65	CUT, PLUG, & ABANDON (8 IN)	EA	2	\$ 1,350.00	\$ 2,700.00	0.00		0.00	\$ -	\$ -	0%	
66	WET CONNECTION (8 IN)	EA	12	\$ 1,500.00	\$ 18,000.00	7.00		7.00	\$ -	\$ 10,500.00	58%	
67	WET CONNECTION (12 IN)	EA	7	\$ 2,000.00	\$ 14,000.00	2.00		2.00	\$ -	\$ 4,000.00	29%	
Sanitary Sewer Items												
68	ADJUST EXIST SAN SWR MANHOLES TO GRADE	EA	1	\$ 1,000.00	\$ 1,000.00	0.00		0.00	\$ -	\$ -	0%	
69	CASING (STEEL) (SAN SWR) (15 IN)	LF	40	\$ 250.00	\$ 10,000.00	0.00		0.00	\$ -	\$ -	0%	
70	10-INCH SAN SWR BY OPEN CUT	LF	19	\$ 500.00	\$ 9,500.00	0.00		0.00	\$ -	\$ -	0%	
Illumination Items												
71	GROUND BOX TYP D (162922)	EA	2	\$ 1,500.00	\$ 3,000.00	0.00		0.00	\$ -	\$ -	0%	
72	STREET LIGHTING CONDUIT, 2-INCH, SCH 80 PVC	LF	162	\$ 30.00	\$ 4,860.00	0.00		0.00	\$ -	\$ -	0%	

\$	13,797,688.00	This Month's Billings	\$	399,375.00
----	---------------	-----------------------	----	------------

Previous Billings	
Month	Amount
01/01/2025 through 01/31/2025	\$ 390,503.20
02/01/2025 through 02/28/2025	\$ 3,450,290.75
03/01/2025 through 03/30/2025	\$ 149,068.68
4/1/2025 through 04/30/2025	\$ 433,357.32
05/01/2025 through 05/31/2025	\$ 910,774.50
TOTAL	\$ 5,333,994.45

Letti Hernandez
Project Manager

Earned to date	\$	6,014,106.00
Stored Materials	\$	-
Subtotal	\$	6,014,106.00
Retainage (5%)	\$	(300,705.30)
Previous Payments	\$	(5,333,994.45)
 Due This Month After Retainage	 \$	 379,406.25

07/09/2025

Date

Item	Item Description	UOM	Est Unit Quantity	Unit Price	Contract Amount	Previous Quantities	This Month Quantities	To Date Quantities	This Month Billing	Total Amount Billed	% Complete	Explanation
General Items												
1	MOBILIZATION	LS	1	\$ 750,000.00	\$ 750,000.00	1.00		1.00	\$ -	\$ 750,000.00	100%	
2	CLEARING AND GRUBBING	AC	6	\$ 2,500.00	\$ 15,000.00	6.00		6.00	\$ -	\$ 15,000.00	100%	
3	UNIFORMED PEACE OFFICERS (MID BID \$55-HR)	HR	1000	\$ 55.00	\$ 55,000.00	19.00		19.00	\$ -	\$ 1,045.00	2%	
4	12" PIPE GATE	EA	2	\$ 5,000.00	\$ 10,000.00	0.00		0.00	\$ -	\$ -	0%	
Demolition Items												
5	REMOVE EXIST ASPHALT PAVEMENT BY MILLING	SY	1986	\$ 5.00	\$ 9,930.00	0.00		0.00	\$ -	\$ -	0%	
6	REMOVE AND DISPOSE OF REINFORCED CONC PAV W/ W/O ASPHALT	SY	3785	\$ 12.00	\$ 45,420.00	0.00		0.00	\$ -	\$ -	0%	
7	REMOVE AND DISPOSE OF EXIST CONC CURB	LF	2200	\$ 1.50	\$ 3,300.00	0.00		0.00	\$ -	\$ -	0%	
8	REMOVE AND DISPOSE OF CONC DRIVEWAYS	SY	424	\$ 12.00	\$ 5,088.00	0.00		0.00	\$ -	\$ -	0%	
9	REMOVE AND DISPOSE OF CONC SIDEWALKS & RAMPS	SY	61	\$ 15.00	\$ 915.00	0.00		0.00	\$ -	\$ -	0%	
10	REMOVE AND DISPOSE OF EXIST STM SWR PIPE	LF	670	\$ 20.00	\$ 13,400.00	0.00		670.00	\$ -	\$ 1,600.00	12%	
11	REMOVE AND DISPOSE OF EXIST MANHOLES	EA	7	\$ 850.00	\$ 5,950.00	1.00		1.00	\$ -	\$ 850.00	14%	
12	REMOVE AND DISPOSE OF EXIST INLETS	EA	6	\$ 850.00	\$ 5,100.00	0.00		0.00	\$ -	\$ -	0%	
13	CUT AND PLUG PIPES	EA	3	\$ 2,000.00	\$ 6,000.00	0.00		0.00	\$ -	\$ -	0%	
Traffic Control Items												
14	TRAFFIC CONTROL AND REGULATION	LS	1	\$ 112,500.00	\$ 112,500.00	0.50	0.10	0.60	\$ 11,250.00	\$ 67,500.00	60%	
15	FURNISH AND INSTALLING PRECAST LPCB TYP 1&2	LF	560	\$ 30.00	\$ 16,800.00	0.00		0.00	\$ -	\$ -	0%	
16	MOVE PRECAST LPCB TYP 1&2	LF	880	\$ 15.00	\$ 13,200.00	0.00		0.00	\$ -	\$ -	0%	
17	REMOVE PRECAST LPCB TYP 1&2	LF	560	\$ 15.00	\$ 8,400.00	0.00		0.00	\$ -	\$ -	0%	
Roadway Items												
18	HYDRATED LIME (SLURRY) OR COMMERCIAL LIME SLURRY	TON	97	\$ 365.00	\$ 35,405.00	0.00		0.00	\$ -	\$ -	0%	
19	8" LIME TREATED STABILIZED SUBGRADE	SY	4388	\$ 8.50	\$ 37,298.00	0.00		0.00	\$ -	\$ -	0%	
20	REINFORCED CONCRETE PAVEMENT (6" DEPTH)	SY	1534	\$ 80.00	\$ 122,720.00	0.00		0.00	\$ -	\$ -	0%	
21	REINFORCED CONCRETE PAVEMENT (6" DEPTH) HES	SY	1041	\$ 100.00	\$ 104,100.00	0.00		0.00	\$ -	\$ -	0%	
22	REINFORCED CONCRETE PAVEMENT (11" DEPTH)	SY	534	\$ 115.00	\$ 61,410.00	0.00		0.00	\$ -	\$ -	0%	
23	REINFORCED CONCRETE PAVEMENT (11" DEPTH) HES	SY	870	\$ 130.00	\$ 113,100.00	0.00		0.00	\$ -	\$ -	0%	
24	TYPE D HOT MIX ASPHALTIC CONC PAV. (1-1/2") INCL. TACKCOAT	TON	362	\$ 250.00	\$ 90,500.00	0.00		0.00	\$ -	\$ -	0%	
25	REINFORCED CONCRETE SIDEWALK (4-1/2" THICK)	SF	152	\$ 25.00	\$ 3,800.00	0.00		0.00	\$ -	\$ -	0%	
26	CONSTRUCT ADA COMPLAINT RAMP	SF	605	\$ 30.00	\$ 18,150.00	0.00		0.00	\$ -	\$ -	0%	
27	6-INCHES CONC DRIVEWAY, INCL. EXCAVATION AND BASE	SF	3287	\$ 12.00	\$ 39,444.00	0.00		0.00	\$ -	\$ -	0%	
28	7-INCH HES CONC DRIVEWAY, INCL. EXCAVATION AND BASE	SF	300	\$ 20.00	\$ 6,000.00	0.00		0.00	\$ -	\$ -	0%	
29	REINFORCED CONCRETE CURB (6")	LF	1810	\$ 5.00	\$ 9,050.00	0.00		0.00	\$ -	\$ -	0%	
30	CONCRETE PAVING HEADER	LF	195	\$ 15.00	\$ 2,925.00	0.00		0.00	\$ -	\$ -	0%	
Pavement Marking Items												
31	THERMOPLASTIC PAVEMENT MARKINGS - (W) (12") (SLD)	LF	132	\$ 5.00	\$ 660.00	0.00		0.00	\$ -	\$ -	0%	
32	THERMOPLASTIC PAVEMENT MARKINGS - (W) (24") (SLD)	LF	65	\$ 10.00	\$ 650.00	0.00		0.00	\$ -	\$ -	0%	
33	RASIED PAVEMENT MARKERS TYPE II (A-A)	EA	34	\$ 10.00	\$ 340.00	0.00		0.00	\$ -	\$ -	0%	
34	THERMOPLASTIC PAVEMENT MARKINGS - (YM4") (SLD)	LF	1274	\$ 2.50	\$ 3,185.00	0.00		0.00	\$ -	\$ -	0%	
Drainage Items												
35	BRICK PLUG IN RCB	SF	240	\$ 50.00	\$ 12,000.00	0.00		0.00	\$ -	\$ -	0%	
36	TYP C-1 INLET W/ ONE EXTENSION	EA	13	\$ 6,500.00	\$ 84,500.00	0.00		0.00	\$ -	\$ -	0%	
37	TXDOT TYP C-1 INLET W/ ONE EXTENSION	EA	5	\$ 7,500.00	\$ 37,500.00	0.00		0.00	\$ -	\$ -	0%	
38	TYP C 4-FOOT DIA PRECAST ROUND CONC MANHOLE	EA	3	\$ 9,000.00	\$ 27,000.00	0.00		0.00	\$ -	\$ -	0%	
39	TYP C 4-FOOT DIA PRECAST MANHOLE ON RCB	EA	10	\$ 3,000.00	\$ 30,000.00	0.00		0.00	\$ -	\$ -	0%	
40	DESIGN, FURNISH, AND INSTALL 9"x9" JUNCTION BOX	EA	3	\$ 30,000.00	\$ 90,000.00	0.00		0.00	\$ -	\$ -	0%	
41	DESIGN, FURNISH, AND INSTALL 9"x9" JUNCTION BOX W/ 4"x3" RESTRICTOR	EA	1	\$ 30,000.00	\$ 30,000.00	0.00		0.00	\$ -	\$ -	0%	
42	3-INCH PVC PIPE TO CURB	LF	20	\$ 20.00	\$ 400.00	0.00		0.00	\$ -	\$ -	0%	
43	4-INCH PVC PIPE TO CURB	LF	20	\$ 25.00	\$ 500.00	0.00		0.00	\$ -	\$ -	0%	
44	24-INCH DIA STM SWR BY OPEN CUT	LF	151	\$ 200.00	\$ 30,200.00	0.00		0.00	\$ -	\$ -	0%	
45	30-INCH DIA STM SWR BY OPEN CUT	LF	14	\$ 300.00	\$ 4,200.00	0.00		0.00	\$ -	\$ -	0%	
46	7x7 RCB BY OPEN CUT	LF	2248	\$ 900.00	\$ 2,023,200.00	0.00		0.00	\$ -	\$ -	0%	
47	7x5 RCB BY OPEN CUT	LF	40	\$ 1,300.00	\$ 52,000.00	0.00		0.00	\$ -	\$ -	0%	
48	7x4 RCB BY OPEN CUT	LF	110	\$ 1,250.00	\$ 137,500.00	0.00		0.00	\$ -	\$ -	0%	
49	TRENCH SAFETY SYSTEM	LF	2563	\$ 5.00	\$ 12,815.00	0.00		0.00	\$ -	\$ -	0%	
SWPPP Items												
50	INLET PROTECTION BARRIER	LF	78	\$ 25.00	\$ 1,950.00	78.00		78.00	\$ -	\$ 1,950.00	100%	
51	BAGGED GRAVEL BARRIER	LF	369	\$ 25.00	\$ 9,225.00	0.00		0.00	\$ -	\$ -	0%	
52	REINFORCED SILT FENCE	LF	2059	\$ 2.00	\$ 4,118.00	2059.00		2059.00	\$ -	\$ 4,118.00	100%	
53	ROCK FILTER DAME - TYPE 2	LF	109	\$ 50.00	\$ 5,450.00	40.00		40.00	\$ -	\$ 2,000.00	37%	
54	STABILIZED CONSTRUCTION ACCESS	SY	110	\$ 35.00	\$ 3,850.00	66.00		66.00	\$ -	\$ 2,310.00	60%	
Water Line Items												
55	HAND DIG FOR WATER LINE INSTALLATION	LS	1	\$ 5,000.00	\$ 5,000.00	1.00		1.00	\$ -	\$ 5,000.00	100%	
56	OFFSET OF EXIST 1-1/2" TO 2" DIA SERVICE LINE, LONG SIDE	EA	20	\$ 4,000.00	\$ 80,000.00	0.00		0.00	\$ -	\$ -	0%	
57	REMOVE OF EXIST WATER LINE (ALL SIZES)	LF	460	\$ 12.00	\$ 5,520.00	0.00		0.00	\$ -	\$ -	0%	
58	TRENCH SAFETY SYSTEM	LF	395	\$ 10.00	\$ 3,950.00	263.00		263.00	\$ -	\$ 2,630.00	67%	
59	WTR MAIN PIPE (PVC) 8-INCH, BY OPEN CUT	LF	207	\$ 250.00	\$ 51,750.00	167.00		167.00	\$ -	\$ 41,750.00	81%	
60	WTR MAIN PIPE (PVC) 12-INCH, BY OPEN CUT	LF	188	\$ 350.00	\$ 65,800.00	96.00		96.00	\$ -	\$ 33,800.00	51%	
61	FIRE HYDRANT BRANCH	LF	5	\$ 250.00	\$ 1,250.00	1.00		1.00	\$ -	\$ 250.00	20%	
62	FIRE HYDRANT ASSEMBLY	EA	1	\$ 15,000.00	\$ 15,000.00	1.00		1.00	\$ -	\$ 15,000.00	100%	
63	REMOVING AND SALVAGING FIRE HYDRANT	EA	1	\$ 550.00	\$ 550.00	1.00		1.00	\$ -	\$ 550.00	100%	
64	CUT, PLUG, & ABANDON (6 IN)	EA	7	\$ 1,250.00	\$ 8,750.00	1.00		1.00	\$ -	\$ 1,250.00	14%	
65	CUT, PLUG, & ABANDON (8 IN)	EA	2	\$ 1,350.00	\$ 2,700.00	0.00		0.00	\$ -	\$ -	0%	
66	WET CONNECTION (8 IN)	EA	12	\$ 1,500.00	\$ 18,000.00	7.00		7.00	\$ -	\$ 10,500.00	58%	
67	WET CONNECTION (12 IN)	EA	7	\$ 2,000.00	\$ 14,000.00	2.00		2.00	\$ -	\$ 4,000.00	28%	
Sanitary Sewer Items												
68	ADJUST EXIST SAN SWR MANHOLES TO GRADE	EA	1	\$ 1,000.00	\$ 1,000.00	0.00		0.00	\$ -	\$ -	0%	
69	CASING (STEEL) (SAN SWR) (15 IN)	LF	40	\$ 250.00	\$ 10,000.00	0.00		0.00	\$ -	\$ -	0%	
70	10-INCH SAN SWR BY OPEN CUT	LF	19	\$ 500.00	\$ 9,500.00	0.00		0.00	\$ -	\$ -	0%	
Illumination Items												
71	GROUND BOX TYP D (162922)	EA	2	\$ 1,500.00	\$ 3,000.00	0.00		0.00	\$ -	\$ -	0%	
72	STREET LIGHTING CONDUIT, 2-INCH, SCH 80 PVC	LF	162	\$ 30.00	\$ 4,860.00	0.00		0.00	\$ -	\$ -	0%	

Detention Basin Items											
73	PIEZOMETER	EA	1	\$	7,500.00	\$	7,500.00	1.00			
74	TYP "C" 6-FOOT DIA PRECAST ROUND CONC MANHOLE	EA	1	\$	30,000.00	\$	30,000.00	1.00			
75	REMOVE AND DISPOSE OF SHEET PILE WEIR	SF	315	\$	10.00	\$	3,150.00	0.00			
76	REMOVE AND DISPOSE OF CHANNEL LINING	SY	1532	\$	10.00	\$	15,320.00	1459.00			
77	REMOVE AND DISPOSE OF EXIST CONC AND CURB/GUTTER	LF	60	\$	5.00	\$	300.00	0.00			
78	REMOVE AND DISPOSE OF EXIST BACKSLOPE INTERCEPTOR STRUCTURE	EA	2	\$	300.00	\$	600.00	2.00			
79	REMOVE AND DISPOSE OF WATER VALVE	EA	3	\$	350.00	\$	1,050.00	3.00			
80	REMOVE AND DISPOSE OF WATER METER	EA	5	\$	350.00	\$	1,750.00	5.00			
81	REMOVE AND DISPOSE OF SPRINKLER	EA	5	\$	250.00	\$	1,250.00	5.00			
82	REMOVE AND DISPOSE OF METAL POST WITH POST/IV BOX	EA	2	\$	250.00	\$	500.00	2.00			
83	REMOVE, STOCKPILE, AND RE-INSTALL STONE RIPRAP	SY	740	\$	70.00	\$	51,800.00	379.00			
84	COARSE FILTER TOE DRAIN (CONC GRAVEL)	LF	1272	\$	35.00	\$	44,520.00	0.00			
85	TOE DRAIN WASHOUT STRUCTURE (PVC)	EA	1	\$	1,500.00	\$	1,500.00	0.00			
86	CRUSHED LIMESTONE - 6" DEPTH (ALL WEATHER ACCESS ROAD)	SY	4104	\$	20.00	\$	82,080.00	0.00			
87	GRANULAR FILL 3"x5" (8-INCH DEPTH) (150 LB/CF) INCL. GEOGRID	TON	2044	\$	80.00	\$	163,520.00	0.00			
88	24" ALUMINIZED STEEL TYPE 2 CMP BY OPEN CUT	LF	249	\$	120.00	\$	29,880.00	0.00	137.00		
89	36" ALUMINIZED STEEL TYPE 2 CMP BY OPEN CUT	LF	124	\$	150.00	\$	18,600.00	124.00			
90	URBAN INTERCEPTOR STRUCTURE	EA	2	\$	5,000.00	\$	10,000.00	0.00			
91	CARE AND CONTROL OF WATER	LS	1	\$	50,000.00	\$	50,000.00	0.85			
92	EXCAVATION AND OFFSITE DISPOSAL	CY	57400	\$	20.00	\$	1,148,000.00	51660			
93	EXCAVATION, STOCKPILE, AND RE-USE SOIL	CY	200	\$	30.00	\$	6,000.00	100			
94	IMPORTED CLAY (CAP OVER SLURRY WALL)	CY	2227	\$	50.00	\$	111,350.00	1810.36			
95	CONCRETE CHANNEL LINING (6" WEIR)	SY	2385	\$	80.00	\$	190,800.00	0			
96	CONCRETE CHANNEL LINING REPAIR, 6" (WEIR)	SY	270	\$	200.00	\$	54,000.00	0			
97	RIPRAP (GRADE NO. 1) (18")	SY	164	\$	120.00	\$	19,680.00	0			
98	SUBSURFACE BARRIER WALL (FURNISH AND INSTALL)	SF	157500	\$	20.00	\$	3,150,000.00	157500			
100	6" PVC (SDR28)	LF	120	\$	50.00	\$	6,000.00	0			
Pump Station Items											
101	GROUND WATER CONTROL FOR OPEN CUT CONSTRUCTION	LS	1	\$	5,000.00	\$	5,000.00	0			
102	TRENCH SAFETY SYSTEMS FOR TRENCH EXCAVATION	LF	450	\$	5.00	\$	2,250.00	124			
103	4"x4" PRECAST REINFORCED CONCRETE BOX SEWERS	LF	130	\$	500.00	\$	65,000.00	130			
104	(PAINTING) PAINTING FOR PIPING, VALVES	LS	1	\$	20,000.00	\$	20,000.00	0			
105	VERTICAL, SINGLE STAGE, NON-CLOG CENTRIFUGAL PUMPS	LS	1	\$	450,000.00	\$	450,000.00	0			
106	AIR RELEASE VALVE FOR PUMPING SYSTEM FORCE MAIN PIPING	EA	4	\$	15,000.00	\$	60,000.00	0			
107	PUMP STATION PIPING - 12-INCH RISER PIPING INCL. VALVES	LS	1	\$	165,000.00	\$	165,000.00	0			
108	PIPE STATION PIPING - 18-INCH RISER PIPING, INCL. VALVES	LS	1	\$	85,000.00	\$	85,000.00	0			
109	STRUCTURAL - WET WELL	LS	1	\$	50,000.00	\$	50,000.00	1			
109.1	STRUCTURAL - WET WELL (ENGINEERING)	LS	1	\$	50,000.00	\$	50,000.00	0.6			
109.2	STRUCTURAL - WET WELL (EXCAVATION PUMP STATION PAD)	LS	1	\$	50,000.00	\$	50,000.00	0.4			
109.3	STRUCTURAL - WET WELL (26" DIA LINER PLATE SHAFT)	LS	1	\$	250,000.00	\$	250,000.00	0.60			
109.4	STRUCTURAL - WET WELL (CIP WET WELL CONC. PLUG)	LS	1	\$	100,000.00	\$	100,000.00	0.9			
109.5	STRUCTURAL - WET WELL (CIP WET WELL BOTTOM SECTION)	LS	1	\$	300,000.00	\$	300,000.00	0.25			
109.6	STRUCTURAL - WET WELL (CIP WET WELL TOP SECTION)	LS	1	\$	300,000.00	\$	300,000.00	0			
109.7	STRUCTURAL - WET WELL (CIP WET WELL TOP)	LS	1	\$	75,000.00	\$	75,000.00	0			
109.8	STRUCTURAL - WET WELL (CIP WET WELL INTERNAL SUPPORT COLUMNS)	LS	1	\$	50,000.00	\$	50,000.00	0			
109.9	STRUCTURAL - WET WELL (DEBRIS SCREEN/METAL COMPONENTS)	LS	1	\$	100,000.00	\$	100,000.00	0			
109.10	STRUCTURAL - WET WELL (BACKFILL STRUCTURE)	LS	1	\$	25,000.00	\$	25,000.00	0			
110	STRUCTURAL - VALVE VAULT	LS	1	\$	100,000.00	\$	100,000.00	0			
110.1	STRUCTURAL - VALVE VAULT (CIP CONC BOTTOM)	LS	1	\$	100,000.00	\$	100,000.00	0			
110.2	STRUCTURAL - VALVE VAULT (CIP CONC WALLS)	LS	1	\$	100,000.00	\$	100,000.00	0			
110.3	STRUCTURAL - VALVE VAULT (INSTALL SCREEN/PLATFORM)	LS	1	\$	50,000.00	\$	50,000.00	0			
111	STRUCTURAL - INTAKE STRUCTURE	LS	1	\$	35,000.00	\$	35,000.00	0			
112	STRUCTURAL - RETAINING WALL MODIFICATIONS	LS	1	\$	30,000.00	\$	30,000.00	0			
113	STRUCTURAL - CMU CONTROL BUILDING W/ PRECAST ROOF	LS	1	\$	33,000.00	\$	33,000.00	0			
113.1	STRUCTURAL - CMU CONTROL BUILDING (CIP FOUNDATION/STAIRS)	LS	1	\$	27,500.00	\$	27,500.00	0			
113.2	STRUCTURAL - CMU CONTROL BUILDING (BRICK WALLS)	LS	1	\$	27,500.00	\$	27,500.00	0			
113.3	STRUCTURAL - CMU CONTROL BUILDING (ROOF)	LS	1	\$	22,000.00	\$	22,000.00	0			
113.4	STRUCTURAL - CMU CONTROL BUILDING (INTERIOR FINISHES)	EA	1	\$	10,000.00	\$	10,000.00	0			
114	ELECTRICAL - CONTROL PANEL AND PANEL INSTRUMENTATION	EA	1	\$	3,000.00	\$	3,000.00	0			
115	ELECTRICAL - LIGHTING CONTRACTOR	EA	1	\$	20,000.00	\$	20,000.00	0			
116	ELECTRICAL - LIGHTING/DISTRIBUTION PANEL	EA	1	\$	10,000.00	\$	10,000.00	0			
117	ELECTRICAL - AUTODIALER OR MOTOROLA ACE3600	EA	1	\$	250,000.00	\$	250,000.00	0			
118	ELECTRICAL - MISCELLANEOUS ELECTRICAL INSTRUMENTATION	EA	1	\$	20,000.00	\$	20,000.00	0			
119	ELECTRICAL - OTHER LIGHTING INCL. ELECTRICAL BUILDING	EA	2	\$	5,000.00	\$	10,000.00	0			
120	ELECTRICAL - CONDUIT AND CABLE	EA	1	\$	20,000.00	\$	20,000.00	0			
121	ELECTRICAL - NEW ELECTRICAL SERVICE	EA	1	\$	160,000.00	\$	160,000.00	0			
122	ELECTRICAL - MOTOR CONTROL CENTER W/ MTS	EA	1	\$	100,000.00	\$	100,000.00	0			
123	ELECTRICAL - 1KVA 1-PHASE TRANSFORMER	EA	1	\$	7,500.00	\$	7,500.00	0			
124	ELECTRICAL - 15KVA 1-PHASE TRANSFORMER	EA	1	\$	20,000.00	\$	20,000.00	0			
125	ELECTRICAL - FIELD INSTRUMENTATION (2 X HYDRANGER UNITS)	EA	2	\$	10,000.00	\$	20,000.00	0			
Tree Protection Items											
127	Install Root Pruning Trench	LF	275	\$	10.00	\$	2,750.00	0			
128	Install Zero Curb Outback	LF	810	\$	15.00	\$	12,150.00	0			
Landscaping Items											
129	BERMUDA SOD (INCL. TOPSOIL)	SY	2432	\$	5.00	\$	12,160.00	0			
130	HYDROMULCH SEEDING	AC	7	\$	1,500.00	\$	10,500.00	0			
Extra Work Items											
131	TEMPORARY BASIN PUMPING	MO	15	\$	1,000.00	\$	15,000.00	4			
132	CLEARANCE PRUNE TREE	EA	10	\$	150.00	\$	1,500.00	0			
133	CROWN CLEANING PRUNE	EA	10	\$	250.00	\$	2,500.00	0			
134	ROOT STIMULATION	EA	10	\$	150.00	\$	1,500.00	0			
Cash Allowance Items											
135	Street Cut Permit	CA	1	\$	5,000.00	\$	5,000.00	0			
136	Street Lights	CA	1	\$	10,000.00	\$	10,000.00	0			
137	Work Change Directives	CA	1	\$	500,000.00	\$	500,000.00	0			

\$ 13,797,888.00

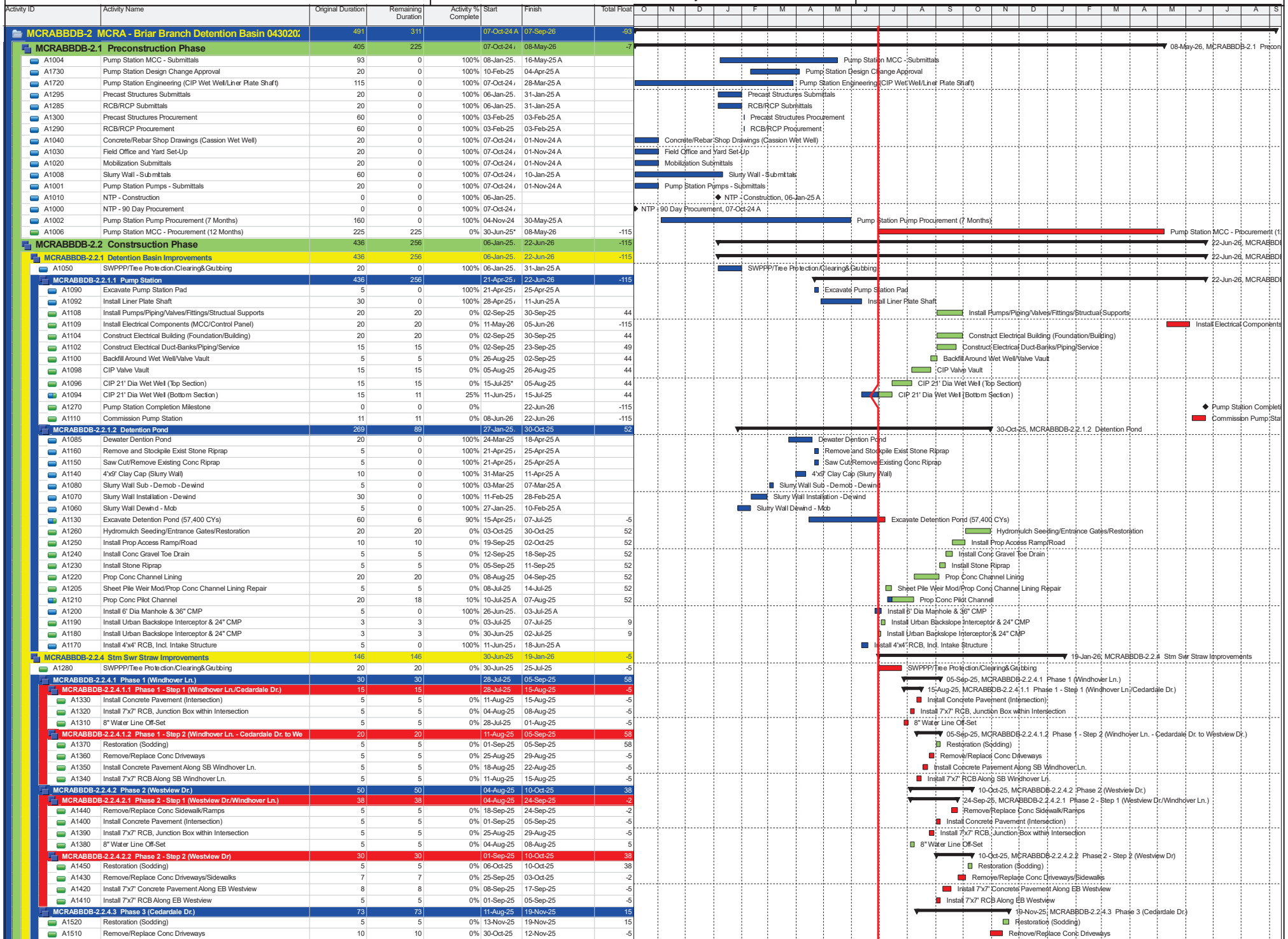
This Month's Billings \$ 399,375.00

Previous Billings	
Month	Amount
01/01/2025 through 01/31/2025	\$ 390,503.20
02/01/2025 through 02/28/2025	\$ 3,450,290.75
03/01/2025 through 03/30/2025	\$ 149,068.68
4/1/2025 through 04/30/2025	\$ 433,357.32
05/01/2025 through 05/31/2025	\$ 910,774.50
TOTAL	\$ 5,333,994.45

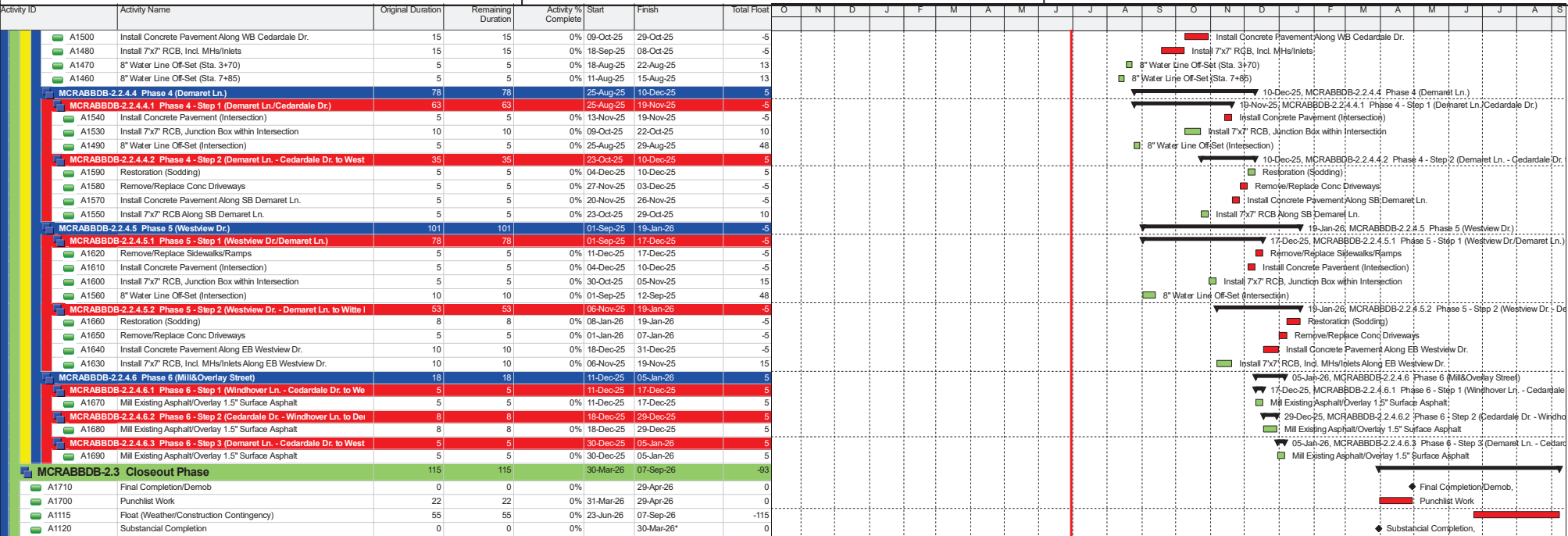

Project Manager

Date 07/03/2025

Earned to date	\$	6,013,106.00
Stored Materials	\$	-
Subtotal	\$	6,013,106.00
Retainage (5%)	\$	(300,655.30)
Previous Payments	\$	(5,333,994.45)
Due This Month After Retainage	\$	378,456.25



Actual Level of Effort Remaining Work
Actual Work Critical Remaining W...





Contract Amount:	\$13,797,688
Goal %	20.00%
Projected Goal%	0.00%
Goal \$	\$2,759,538
Project Goal \$	\$0

Page 1

Document 00642

MONTHLY SUBCONTRACTOR PAYMENT REPORTING FORMLegal Project Name: BRIAR BRANCH DETENTION BASIN & STORM SEWER IMPROVEMENTS
Outline Agreement No.: _____ WBS No.: N-T17000-0021-3Contractor's Company Name: Reytec Construction Resources, Inc.Address: 1901 Hollister St, Houston, TX 77080**CERTIFICATION**

Letti Hernandez, Contractor's Representative for the above referenced Contract, hereby certifies that (1) Contractor has paid all subcontractors, except those noted below, (2) Contractor made such payments (a) in proportion to the amount City paid Contractor and (b) in accordance and compliance with all applicable Contract Documents and laws; and (3) Contractor withheld no sums from any subcontractor for allegations of deficiency in Work. The term "subcontractor", as used herein, includes all persons or firms furnishing work, materials, services or equipment Contractor ordered incorporated into Work or placed near the Project for which the City made partial payment.

EXCEPTION: Contractor sent Payment Notifications to the following subcontractors explaining why Contractor withheld payment. Copies are attached.

Subcontractor Name: _____ Subcontractor Name: _____

Street Address: _____ Street Address: _____

City, State, and Zip Code: _____ City, State, and Zip Code: _____

Amount of Payment Withheld: _____ Amount of Payment Withheld: _____

Date Payment First Withheld: _____ Date Payment First Withheld: _____

Description of Good Faith Reason: _____ Description of Good Faith Reason: _____

Letti Hernandez
(Signature of Contractor's Representative)

Letti Hernandez
(Print or Type Name of Contractor's Representative)

07/03/2025
Date

00642
03-20-2020**CONTRACTOR PAYMENT REPORT FORM**

Instructions: Contractors are required to complete and submit this report, as specified in the contract or as requested, until final payment of the contract has been made. Failure to comply with the DBE/MWBE/HUB provisions may result in contract termination, or the suspension or debarment of the contractor from doing business with the MHRA in the future in accordance with the procedures set forth in the DBE/MWBE/HUB Program. This report must be submitted with each invoice. Instructions for completing this report can be found on the following sheet.

1 Contract Number, if applicable	2 Invoice Number	3 Reporting Period		4 Contractor's Business Name	5 Contact Person	6 Address			
		From:	To:						
W140-01-00	6	6/1/2025	6/30/2025	Reytec Construction Resources, Inc.	Letti Hernandez	1901 Hollister St, Houston, TX 77080			
7 Telephone Number	8 Date of Contract Award	9 Schedule Date of Completion	10 Original Contract Amount	11 Current Contract Modifications	12 Total Amount Received to Date	13 Total Amount Owed			
(832) 622-3633	10/15/2024	4/27/2026	\$13,797,688.00	\$0.00	\$5,333,994.45	\$379,406.25			
14 Committed DBE/MWBE/HUB %	15 Actual DBE/MWBE/HUB Participation to date	16 Actual DBE/MWBE/HUB % to date							
20.00%	\$0.00	0.00%							
17 Name of DBE/MWBE/HUB Subcontractor	18 Description of Work	19 Amount of payments made during current invoice period	20 Date of payments made during current invoice period	21 Subcontract Dollars	22 Amount paid to date	23 Percent paid to date	24 Amount of this invoice allocated to DBE/MWBE/HUB Subcontractor		
DBE MWSBE SUBCONTRACTORS									
Moran Construction LLC	paving			\$738,997.40	\$ -		\$ -		
							\$ -		
							\$ -		
							\$ -		
							\$ -		
							\$ -		
DBE MWSBE SUPPLIERS									
							\$ -		
							\$ -		
NON-DBE MWSBE SUBCONTRACTORS/SUPPLIERS									
							\$ -		
							\$ -		

By completing this form, the Contractor acknowledges the MHRA's prompt payment policy, which requires the Contractor to pay all subcontractors within 10 days of receiving payment from the MHRA.

Signature	Date Signed	Name and Title of Individual Completing Report
<u>Letti Hernandez</u>	07/09/2025	Letti Hernandez, Project Manager

PAYMENT NOTIFICATION – EXPLANATION OF WITHHOLDING

Legal Project Name: BRIAR BRANCH DETENTION BASIN & STORM SEWER IMPROVEMENTS

Outline Agreement No.: _____ WBS No.: N-T17000-0021-3

Contractor's Company Name: Reytec Construction, Inc.

Address: 1901 Hollister St, Houston, TX 77080

Date: 07/03/2025

SUBCONTRACTOR PAYMENT INFORMATION:

Subcontractor Name: _____

Street Address: _____

City, State, and Zip Code: _____

Business Phone Number: _____

Amount of Subcontractor Invoice: _____

Amount of Payment Made: _____

Amount of Payment Withheld: _____

Date Payment First Withheld: _____

DETAILED EXPLANATION OF WITHHOLDING: _____

Letti Hernandez
(Signature of Contractor's Representative)

Letti Hernandez
(Print or Type Name of Contractor's Representative)

PAYROLL REPORTING																				Page: 1 of 5 Date: Jul 07, 2025 Time: 3:19 PM EDT			
NAME OF CONTRACTOR : Reytec Construction Resources CONTRACTOR'S LICENSE NO: OR SUBCONTRACTOR : SPECIALTY LICENSE NO: CONTRACTOR JOB NUMBER: 2289												ADDRESS: 1901 Hollister Street, Houston, TX, 77080											
PAYROLL No.		FOR WEEK ENDING: 08-JUN-25										SELF-INSURED CERTIFICATE NO: WORKER'S COMPENSATION POLICY NO: FEIN: 76-0516513						PROJECT OR CONTRACT NO: 2289 PROJECT AND LOCATION: Blar Branch Storm Water Detention Basin Expansion					
(1) Name, Address and SSN of Employee	(2) Exempt ions	(3) Work Classification	(4) DAY								(5) Total Hours	(6) Hourly Rate of Pay	(7)				(8)				(9) Net Wages Paid for Week Check No.		
			M	T	W	Th	F	S	S	DATE			GROSS AMOUNT EARNED		DEDUCTIONS, CONTRIBUTIONS AND PAYMENTS								
			02	03	04	05	06	07	08	HOURS WORKED EACH DAY			THIS PROJECT	ALL PROJECTS	Fed. Tax	FICA	Local/ State tax	SDI	Vacation Holiday	Total Benefits			Total Deduction
Amaya, Jose 16506 Sinaloa Dr. Houston, TX 77083 ****9491		Excavator Op	OT	0	0	0	4.5	10	0	10	24.5	40.50	THIS PROJECT	ALL PROJECTS	Fed. Tax	FICA	Local/ State tax	SDI	Vacation Holiday <td>Total Benefits</td> <td>Total Deduction</td> <td>1,619.09</td> <td>14131</td>	Total Benefits	Total Deduction	1,619.09	14131
			ST	10.5	10	12.5	7	0	0	0	40	27.00	2,072.25	2,072.25	294.63	158.53			0.00		453.16		
													HOURS	HOURS	Training	Fund Admin	Dues	Travel Subs.	Savings	Health & Welf.	Pension		
													64.5	64.5	0.00	0.00	0.00	0.00	0.00	0.00	0.00		
													THIS PROJECT	ALL PROJECTS	Fed. Tax	FICA	Local/ State tax	SDI	Vacation Holiday	Total Benefits	Total Deduction		
													369.75	871.25	29.43	66.65			0.00		96.08	775.17	14195
													HOURS	HOURS	Training	Fund Admin	Dues	Travel Subs.	Savings	Health & Welf.	Pension		
													18	47.5	0.00	0.00	0.00	0.00	0.00	0.00	0.00		
DeSantiago-Juarez, Rodrigo 2011 Sadler St. Houston, TX 77093 ****1621	3	Concrete Finish	OT	0	0	0	0	7.5	0	0	7.5	25.00	THIS PROJECT	ALL PROJECTS	Fed. Tax	FICA	Local/ State tax	SDI	Vacation Holiday	Total Benefits	Total Deduction		
			ST	0	9	0	0	1.5	0	0	10.5	17.00	THIS PROJECT	ALL PROJECTS	Fed. Tax	FICA	Local/ State tax	SDI	Vacation Holiday	Total Benefits	Total Deduction		
													399.75	871.25	29.43	66.65			0.00		96.08	775.17	14195
													HOURS	HOURS	Training	Fund Admin	Dues	Travel Subs.	Savings	Health & Welf.	Pension		
													18	47.5	0.00	0.00	0.00	0.00	0.00	0.00	0.00		
Fuentes-Amaya, Luis 16506 Sinaloa Dr. Houston, TX 77083 ****9349		Bulldozer Op	OT	8	8	0	0	0	0	0	16	24.50	THIS PROJECT	ALL PROJECTS	Fed. Tax	FICA	Local/ State tax	SDI	Vacation Holiday	Total Benefits	Total Deduction		
			ST										392.00	392.00	10.35	29.98			0.00		40.33	351.67	14229
													HOURS	HOURS	Training	Fund Admin	Dues	Travel Subs.	Savings	Health & Welf.	Pension		
													16	16	0.00	0.00	0.00	0.00	0.00	0.00	0.00		
Morales, Roger 12066 Sela Lane Apt B1, Houston, TX 77072 ****8058		Pipe Layer Help	OT	0	0	0	4.5	10	0	0	14.5	27.75	THIS PROJECT	ALL PROJECTS	Fed. Tax	FICA	Local/ State tax	SDI	Vacation Holiday	Total Benefits	Total Deduction		
			ST	10.5	10	12.5	7	0	0	0	40	18.50	THIS PROJECT	ALL PROJECTS	Fed. Tax	FICA	Local/ State tax	SDI	Vacation Holiday	Total Benefits	Total Deduction		
													1,142.38	1,142.38		87.39			0.00		87.39	1,054.99	14346
													HOURS	HOURS	Training	Fund Admin	Dues	Travel Subs.	Savings	Health & Welf.	Pension		
													54.5	54.5	0.00	0.00	0.00	0.00	0.00	0.00	0.00		
Paz-Marquez, Santos 8311 Winkler Dr. Apt 50, Houston, TX 77072 ****5466		Pipe Layer Help	OT	0	0	0	3	11	11	10	35	25.25	THIS PROJECT	ALL PROJECTS	Fed. Tax	FICA	Local/ State tax	SDI	Vacation Holiday	Total Benefits	Total Deduction		
			ST	0	0	11	8	0	0	0	19	19.50	THIS PROJECT	ALL PROJECTS	Fed. Tax	FICA	Local/ State tax	SDI	Vacation Holiday	Total Benefits	Total Deduction		
													1,394.25	1,803.75	110.56	137.98			0.00		248.54	1,555.21	14378
													HOURS	HOURS	Training	Fund Admin	Dues	Travel Subs.	Savings	Health & Welf.	Pension		
													54	75	0.00	0.00	0.00	0.00	0.00	0.00	0.00		

PAYROLL REPORTING

Page: 2 of 5
Date: Jul 07, 2025
Time: 3:19 PM EDT

			NAME OF CONTRACTOR : Ryleec Construction Resources CONTRACTOR'S LICENSE NO: SPECIALTY LICENSE NO: CONTRACTOR JOB NUMBER: 2289													ADDRESS: 1901 Hollister Street, Houston, TX, 77080																													
PAYROLL No.		FOR WEEK ENDING: 06-JUN-25													SELF-INSURED CERTIFICATE NO: WORKER'S COMPENSATION POLICY NO: FEIN: 76-0516513													PROJECT OR CONTRACT NO: 2289 PROJECT AND LOCATION: Briar Branch Storm Water Detention Basin Expansion																	
(1) Name, Address and SSN of Employee	(2) Exempt ions	(3) Work Classification	(4) DAY													(5) Total Hours	(6) Hourly Rate of Pay	(7)													(8)													(9)	
			M	T	W	TH	F	S	S	(7)										(8)																									
			DATE							(7)										(8)																									
			02	03	04	05	06	07	08	(7)										(8)																									
			HOURS WORKED EACH DAY																																										
Paz, Jose 8311 Winkler Dr. #69, Houston, TX 77017 ***6631		Pipe Layer	OT	0	0	0	3	11	11	10	35	31.50	THIS PROJECT	ALL PROJECTS	Fed. Tax	FICA	Local/ State tax	SDI	Vacation Holiday	Total Benefits	Total Deduction																								
			ST	0	0	11	8	0	0	0	19	21.00	1,501.50	1,942.50	112.23	148.61			0.00		260.84																								
													HOURS	HOURS	Training	Fund Admin	Dues	Travel Subs.	Savings	Health & Wellf.	Pension																								
													54	75	0.00	0.00	0.00	0.00	0.00	0.00	0.00																								
Perez-Barrera, Marco 25647 Ipes Rd. Splendora, TX 77372 ****7832		Pipe Layer	OT	0	0	0	3	11	11	10	35	28.50	THIS PROJECT	ALL PROJECTS	Fed. Tax	FICA	Local/ State tax	SDI	Vacation Holiday	Total Benefits	Total Deduction																								
			ST	0	0	11	8	0	0	0	19	19.00	1,358.50	1,757.50	110.00	134.45			0.00		244.45																								
													HOURS	HOURS	Training	Fund Admin	Dues	Travel Subs.	Savings	Health & Wellf.	Pension																								
													54	75	0.00	0.00	0.00	0.00	0.00	0.00	0.00																								
Ramirez-Garcia, Melchor 8714 Dexter Houston, TX 77075 ****2175		Laborer Common	OT	0	0	0	3	11	11	10	35	29.25	THIS PROJECT	ALL PROJECTS	Fed. Tax	FICA	Local/ State tax	SDI	Vacation Holiday	Total Benefits	Total Deduction																								
			ST	0	0	11	8	0	0	0	19	19.50	1,394.25	1,803.75	61.12	137.98			0.00		199.10																								
													HOURS	HOURS	Training	Fund Admin	Dues	Travel Subs.	Savings	Health & Wellf.	Pension																								
													54	75	0.00	0.00	0.00	0.00	0.00	0.00	0.00																								
Rivas-Castro, Jose 462 Country Road 3479J Cleveland, TX 77327 ****0018		Pipe Layer	OT	0	0	0	2	10	0	0	12	34.50	THIS PROJECT	ALL PROJECTS	Fed. Tax	FICA	Local/ State tax	SDI	Vacation Holiday	Total Benefits	Total Deduction																								
			ST	10.5	11.5	10	8	0	0	0	40	23.00	1,334.00	1,334.00		102.05			0.00		102.05																								
													HOURS	HOURS	Training	Fund Admin	Dues	Travel Subs.	Savings	Health & Wellf.	Pension																								
													52	52	0.00	0.00	0.00	0.00	0.00	0.00	0.00																								
Tejada, Oscar 8311 Winkler Dr. #69, Houston, TX 77017 ****6445		Pipe Layer Help	OT	0	0	0	3	11	11	10	35	26.50	THIS PROJECT	ALL PROJECTS	Fed. Tax	FICA	Local/ State tax	SDI	Vacation Holiday	Total Benefits	Total Deduction																								
			ST	0	0	11	8	0	0	0	19	19.00	1,358.50	1,757.50		134.05			0.00		139.36																								
													HOURS	HOURS	Training	Fund Admin	Dues	Travel Subs.	Savings	Health & Wellf.	Pension																								
													54	75	0.00	0.00	0.00	0.00	0.00	0.00	0.00																								
THIS PROJECT TOTAL										695		17,712.26																																	

PAYROLL REPORTING

Page: 3 of 5
Date: Jul 07, 2025
Time: 3:19 PM EDT

		NAME OF CONTRACTOR : Ryleec Construction Resources CONTRACTOR'S LICENSE NO: OR SUBCONTRACTOR : SPECIALTY LICENSE NO: CONTRACTOR JOB NUMBER: 2289												ADDRESS: 1901 Hollister Street, Houston, TX, 77080																														
PAYROLL No.		FOR WEEK ENDING: 08-JUN-25												SELF-INSURED CERTIFICATE NO: WORKERS' COMPENSATION POLICY NO: FEIN: 76-0516513												PROJECT OR CONTRACT NO: 2289 PROJECT AND LOCATION: Briar Branch Storm Water Detention Basin Expansion																		
(1) Name, Address and SSN of Employee	(2) Exempt ions	(3) Work Classification	(4) DAY												(5) Total Hours	(6) Hourly Rate of Pay	(7)												(8)												(9) Net Wages Paid for Week		Check No.	
			M T W T F S S							DATE	GROSS AMOUNT EARNED												DEDUCTIONS, CONTRIBUTIONS AND PAYMENTS																					
			02	03	04	05	06	07	08		HOURS WORKED EACH DAY																																	
			OT	ST	0	0	0	2.5	11		11	0	24.5	41.25			THIS PROJECT	ALL PROJECTS	Fed. Tax	FICA	Local/ State tax	SDI	Vacation Holiday	Total Benefits	Total Deduction	1,780.07	14287																	
01	0	0	0	11	8.5	0	0	0	19.5	27.50	1,546.88	2,110.63	174.87	161.46			0.00	5.77	336.33																									
Jimenez-Tovar, Cesar 7500 Plum Creek Dr. #605, Houston, TX 77012 *****1697	Excavator Op	ST	0	0	0	2.5 <td>11<td>11<td>0</td><td>24.5<td>41.25<td>THIS PROJECT<td>ALL PROJECTS<td>Fed. Tax<td>FICA<td>Local/ State tax<td>SDI<td>Vacation Holiday<td>Total Benefits<td>Total Deduction</td><td></td><td></td></td></td></td></td></td></td></td></td></td></td></td></td>	11 <td>11<td>0</td><td>24.5<td>41.25<td>THIS PROJECT<td>ALL PROJECTS<td>Fed. Tax<td>FICA<td>Local/ State tax<td>SDI<td>Vacation Holiday<td>Total Benefits<td>Total Deduction</td><td></td><td></td></td></td></td></td></td></td></td></td></td></td></td>	11 <td>0</td> <td>24.5<td>41.25<td>THIS PROJECT<td>ALL PROJECTS<td>Fed. Tax<td>FICA<td>Local/ State tax<td>SDI<td>Vacation Holiday<td>Total Benefits<td>Total Deduction</td><td></td><td></td></td></td></td></td></td></td></td></td></td></td>	0	24.5 <td>41.25<td>THIS PROJECT<td>ALL PROJECTS<td>Fed. Tax<td>FICA<td>Local/ State tax<td>SDI<td>Vacation Holiday<td>Total Benefits<td>Total Deduction</td><td></td><td></td></td></td></td></td></td></td></td></td></td>	41.25 <td>THIS PROJECT<td>ALL PROJECTS<td>Fed. Tax<td>FICA<td>Local/ State tax<td>SDI<td>Vacation Holiday<td>Total Benefits<td>Total Deduction</td><td></td><td></td></td></td></td></td></td></td></td></td>	THIS PROJECT <td>ALL PROJECTS<td>Fed. Tax<td>FICA<td>Local/ State tax<td>SDI<td>Vacation Holiday<td>Total Benefits<td>Total Deduction</td><td></td><td></td></td></td></td></td></td></td></td>	ALL PROJECTS <td>Fed. Tax<td>FICA<td>Local/ State tax<td>SDI<td>Vacation Holiday<td>Total Benefits<td>Total Deduction</td><td></td><td></td></td></td></td></td></td></td>	Fed. Tax <td>FICA<td>Local/ State tax<td>SDI<td>Vacation Holiday<td>Total Benefits<td>Total Deduction</td><td></td><td></td></td></td></td></td></td>	FICA <td>Local/ State tax<td>SDI<td>Vacation Holiday<td>Total Benefits<td>Total Deduction</td><td></td><td></td></td></td></td></td>	Local/ State tax <td>SDI<td>Vacation Holiday<td>Total Benefits<td>Total Deduction</td><td></td><td></td></td></td></td>	SDI <td>Vacation Holiday<td>Total Benefits<td>Total Deduction</td><td></td><td></td></td></td>	Vacation Holiday <td>Total Benefits<td>Total Deduction</td><td></td><td></td></td>	Total Benefits <td>Total Deduction</td> <td></td> <td></td>	Total Deduction																								
												HOURS	HOURS	Training	Fund Admin	Dues	Travel Subs.	Savings	Health & Welf.	Pension																								
												44	64.5	0.00	0.00	0.00	0.00	0.00	0.00	0.00																								
Vasquez-Alvarez, Noe 505 Thornton Rd. #14, Houston, TX 77018 ****4609	Laborer Common	OT	0	0	0	2.5 <td>10.5<td>8</td><td>5</td><td>26</td><td>24.00<td>THIS PROJECT<td>ALL PROJECTS<td>Fed. Tax<td>FICA<td>Local/ State tax<td>SDI<td>Vacation Holiday<td>Total Benefits<td>Total Deduction</td><td rowspan="4">1,050.49</td><td rowspan="4">14468</td></td></td></td></td></td></td></td></td></td></td>	10.5 <td>8</td> <td>5</td> <td>26</td> <td>24.00<td>THIS PROJECT<td>ALL PROJECTS<td>Fed. Tax<td>FICA<td>Local/ State tax<td>SDI<td>Vacation Holiday<td>Total Benefits<td>Total Deduction</td><td rowspan="4">1,050.49</td><td rowspan="4">14468</td></td></td></td></td></td></td></td></td></td>	8	5	26	24.00 <td>THIS PROJECT<td>ALL PROJECTS<td>Fed. Tax<td>FICA<td>Local/ State tax<td>SDI<td>Vacation Holiday<td>Total Benefits<td>Total Deduction</td><td rowspan="4">1,050.49</td><td rowspan="4">14468</td></td></td></td></td></td></td></td></td>	THIS PROJECT <td>ALL PROJECTS<td>Fed. Tax<td>FICA<td>Local/ State tax<td>SDI<td>Vacation Holiday<td>Total Benefits<td>Total Deduction</td><td rowspan="4">1,050.49</td><td rowspan="4">14468</td></td></td></td></td></td></td></td>	ALL PROJECTS <td>Fed. Tax<td>FICA<td>Local/ State tax<td>SDI<td>Vacation Holiday<td>Total Benefits<td>Total Deduction</td><td rowspan="4">1,050.49</td><td rowspan="4">14468</td></td></td></td></td></td></td>	Fed. Tax <td>FICA<td>Local/ State tax<td>SDI<td>Vacation Holiday<td>Total Benefits<td>Total Deduction</td><td rowspan="4">1,050.49</td><td rowspan="4">14468</td></td></td></td></td></td>	FICA <td>Local/ State tax<td>SDI<td>Vacation Holiday<td>Total Benefits<td>Total Deduction</td><td rowspan="4">1,050.49</td><td rowspan="4">14468</td></td></td></td></td>	Local/ State tax <td>SDI<td>Vacation Holiday<td>Total Benefits<td>Total Deduction</td><td rowspan="4">1,050.49</td><td rowspan="4">14468</td></td></td></td>	SDI <td>Vacation Holiday<td>Total Benefits<td>Total Deduction</td><td rowspan="4">1,050.49</td><td rowspan="4">14468</td></td></td>	Vacation Holiday <td>Total Benefits<td>Total Deduction</td><td rowspan="4">1,050.49</td><td rowspan="4">14468</td></td>	Total Benefits <td>Total Deduction</td> <td rowspan="4">1,050.49</td> <td rowspan="4">14468</td>	Total Deduction	1,050.49	14468																						
		ST	10.5 <td>11.5<td>10.5<td>7.5</td><td>0</td><td>0</td><td>0</td><td>40</td><td>16.00<td>1,264.00</td><td>1,264.00</td><td>116.81</td><td>96.70</td><td></td><td></td><td>0.00</td><td>213.51</td><td></td><td></td></td></td></td>	11.5 <td>10.5<td>7.5</td><td>0</td><td>0</td><td>0</td><td>40</td><td>16.00<td>1,264.00</td><td>1,264.00</td><td>116.81</td><td>96.70</td><td></td><td></td><td>0.00</td><td>213.51</td><td></td><td></td></td></td>	10.5 <td>7.5</td> <td>0</td> <td>0</td> <td>0</td> <td>40</td> <td>16.00<td>1,264.00</td><td>1,264.00</td><td>116.81</td><td>96.70</td><td></td><td></td><td>0.00</td><td>213.51</td><td></td><td></td></td>	7.5	0	0	0	40	16.00 <td>1,264.00</td> <td>1,264.00</td> <td>116.81</td> <td>96.70</td> <td></td> <td></td> <td>0.00</td> <td>213.51</td> <td></td> <td></td>	1,264.00	1,264.00	116.81	96.70			0.00	213.51																									
												HOURS	HOURS	Training	Fund Admin	Dues	Travel Subs.	Savings	Health & Welf.	Pension																								
												68	66	0.00	0.00	0.00	0.00	0.00	0.00	0.00																								
Zavala, Enrique 1601 Buschong St. Houston, TX 77039 ****2673	Excavator Op	OT	0	0	0	3 <td>11<td>8</td><td>0</td><td>22</td><td>36.00<td>THIS PROJECT<td>ALL PROJECTS<td>Fed. Tax<td>FICA<td>Local/ State tax<td>SDI<td>Vacation Holiday<td>Total Benefits<td>Total Deduction</td><td rowspan="4">1,261.30</td><td rowspan="4">14481</td></td></td></td></td></td></td></td></td></td></td>	11 <td>8</td> <td>0</td> <td>22</td> <td>36.00<td>THIS PROJECT<td>ALL PROJECTS<td>Fed. Tax<td>FICA<td>Local/ State tax<td>SDI<td>Vacation Holiday<td>Total Benefits<td>Total Deduction</td><td rowspan="4">1,261.30</td><td rowspan="4">14481</td></td></td></td></td></td></td></td></td></td>	8	0	22	36.00 <td>THIS PROJECT<td>ALL PROJECTS<td>Fed. Tax<td>FICA<td>Local/ State tax<td>SDI<td>Vacation Holiday<td>Total Benefits<td>Total Deduction</td><td rowspan="4">1,261.30</td><td rowspan="4">14481</td></td></td></td></td></td></td></td></td>	THIS PROJECT <td>ALL PROJECTS<td>Fed. Tax<td>FICA<td>Local/ State tax<td>SDI<td>Vacation Holiday<td>Total Benefits<td>Total Deduction</td><td rowspan="4">1,261.30</td><td rowspan="4">14481</td></td></td></td></td></td></td></td>	ALL PROJECTS <td>Fed. Tax<td>FICA<td>Local/ State tax<td>SDI<td>Vacation Holiday<td>Total Benefits<td>Total Deduction</td><td rowspan="4">1,261.30</td><td rowspan="4">14481</td></td></td></td></td></td></td>	Fed. Tax <td>FICA<td>Local/ State tax<td>SDI<td>Vacation Holiday<td>Total Benefits<td>Total Deduction</td><td rowspan="4">1,261.30</td><td rowspan="4">14481</td></td></td></td></td></td>	FICA <td>Local/ State tax<td>SDI<td>Vacation Holiday<td>Total Benefits<td>Total Deduction</td><td rowspan="4">1,261.30</td><td rowspan="4">14481</td></td></td></td></td>	Local/ State tax <td>SDI<td>Vacation Holiday<td>Total Benefits<td>Total Deduction</td><td rowspan="4">1,261.30</td><td rowspan="4">14481</td></td></td></td>	SDI <td>Vacation Holiday<td>Total Benefits<td>Total Deduction</td><td rowspan="4">1,261.30</td><td rowspan="4">14481</td></td></td>	Vacation Holiday <td>Total Benefits<td>Total Deduction</td><td rowspan="4">1,261.30</td><td rowspan="4">14481</td></td>	Total Benefits <td>Total Deduction</td> <td rowspan="4">1,261.30</td> <td rowspan="4">14481</td>	Total Deduction	1,261.30	14481																						
		ST	0	0	11	8	0	0	0	19	24.00 <td>1,248.00<td>1,752.00</td><td>249.26</td><td>132.38</td><td></td><td></td><td>0.00</td><td></td><td>490.70</td><td></td><td></td></td>	1,248.00 <td>1,752.00</td> <td>249.26</td> <td>132.38</td> <td></td> <td></td> <td>0.00</td> <td></td> <td>490.70</td> <td></td> <td></td>	1,752.00	249.26	132.38			0.00		490.70																								
												HOURS	HOURS	Training	Fund Admin	Dues	Travel Subs.	Savings	Health & Welf.	Pension																								
												41	62	0.00	0.00	0.00	0.00	0.00	0.00	0.00																								
Zelino-Contreras, Saul 4607 Sherwood Lane #784, Houston, TX 77092 ****7523	Laborer Common	OT	0	0	0	2.5 <td>10.5<td>8</td><td>8</td><td>29</td><td>24.00<td>THIS PROJECT<td>ALL PROJECTS<td>Fed. Tax<td>FICA<td>Local/ State tax<td>SDI<td>Vacation Holiday<td>Total Benefits<td>Total Deduction</td><td rowspan="4">1,174.33</td><td rowspan="4">14484</td></td></td></td></td></td></td></td></td></td></td>	10.5 <td>8</td> <td>8</td> <td>29</td> <td>24.00<td>THIS PROJECT<td>ALL PROJECTS<td>Fed. Tax<td>FICA<td>Local/ State tax<td>SDI<td>Vacation Holiday<td>Total Benefits<td>Total Deduction</td><td rowspan="4">1,174.33</td><td rowspan="4">14484</td></td></td></td></td></td></td></td></td></td>	8	8	29	24.00 <td>THIS PROJECT<td>ALL PROJECTS<td>Fed. Tax<td>FICA<td>Local/ State tax<td>SDI<td>Vacation Holiday<td>Total Benefits<td>Total Deduction</td><td rowspan="4">1,174.33</td><td rowspan="4">14484</td></td></td></td></td></td></td></td></td>	THIS PROJECT <td>ALL PROJECTS<td>Fed. Tax<td>FICA<td>Local/ State tax<td>SDI<td>Vacation Holiday<td>Total Benefits<td>Total Deduction</td><td rowspan="4">1,174.33</td><td rowspan="4">14484</td></td></td></td></td></td></td></td>	ALL PROJECTS <td>Fed. Tax<td>FICA<td>Local/ State tax<td>SDI<td>Vacation Holiday<td>Total Benefits<td>Total Deduction</td><td rowspan="4">1,174.33</td><td rowspan="4">14484</td></td></td></td></td></td></td>	Fed. Tax <td>FICA<td>Local/ State tax<td>SDI<td>Vacation Holiday<td>Total Benefits<td>Total Deduction</td><td rowspan="4">1,174.33</td><td rowspan="4">14484</td></td></td></td></td></td>	FICA <td>Local/ State tax<td>SDI<td>Vacation Holiday<td>Total Benefits<td>Total Deduction</td><td rowspan="4">1,174.33</td><td rowspan="4">14484</td></td></td></td></td>	Local/ State tax <td>SDI<td>Vacation Holiday<td>Total Benefits<td>Total Deduction</td><td rowspan="4">1,174.33</td><td rowspan="4">14484</td></td></td></td>	SDI <td>Vacation Holiday<td>Total Benefits<td>Total Deduction</td><td rowspan="4">1,174.33</td><td rowspan="4">14484</td></td></td>	Vacation Holiday <td>Total Benefits<td>Total Deduction</td><td rowspan="4">1,174.33</td><td rowspan="4">14484</td></td>	Total Benefits <td>Total Deduction</td> <td rowspan="4">1,174.33</td> <td rowspan="4">14484</td>	Total Deduction	1,174.33	14484																						
		ST	10.5 <td>11.5<td>10.5<td>7.5</td><td>0</td><td>0</td><td>0</td><td>40</td><td>16.00<td>1,336.00<td>1,336.00<td>54.56</td><td>101.80</td><td></td><td></td><td>0.00</td><td></td><td>161.67</td><td></td><td></td></td></td></td></td></td>	11.5 <td>10.5<td>7.5</td><td>0</td><td>0</td><td>0</td><td>40</td><td>16.00<td>1,336.00<td>1,336.00<td>54.56</td><td>101.80</td><td></td><td></td><td>0.00</td><td></td><td>161.67</td><td></td><td></td></td></td></td></td>	10.5 <td>7.5</td> <td>0</td> <td>0</td> <td>0</td> <td>40</td> <td>16.00<td>1,336.00<td>1,336.00<td>54.56</td><td>101.80</td><td></td><td></td><td>0.00</td><td></td><td>161.67</td><td></td><td></td></td></td></td>	7.5	0	0	0	40	16.00 <td>1,336.00<td>1,336.00<td>54.56</td><td>101.80</td><td></td><td></td><td>0.00</td><td></td><td>161.67</td><td></td><td></td></td></td>	1,336.00 <td>1,336.00<td>54.56</td><td>101.80</td><td></td><td></td><td>0.00</td><td></td><td>161.67</td><td></td><td></td></td>	1,336.00 <td>54.56</td> <td>101.80</td> <td></td> <td></td> <td>0.00</td> <td></td> <td>161.67</td> <td></td> <td></td>	54.56	101.80			0.00		161.67																								
												HOURS	HOURS	Training	Fund Admin	Dues	Travel Subs.	Savings	Health & Welf.	Pension																								
												69	69	0.00	0.00	0.00	0.00	0.00	0.00	0.00																								
THIS PROJECT TOTAL															695		17,712.26																											

Page: 4 of 5
Date: Jul 07, 2025
Time: 3:19 PM EDT

do hereby state:

Reytec Construction Resources on the
(Contractor or Subcontractor)

02nd day of June, 2025, and ending the 08th day of June, 2025

all persons employed on said project have been paid the full weekly wages earned, that no rebates have been or will be made either directly or indirectly to or on behalf of said

weekly wages earned by any person and that no deductions have been made either directly or indirectly from the full wages earned by any person, other than permissible deductions as defined in Regulations, Part 3 (29 C.F.R. Subtitle A), issued by the Secretary of Labor under the Copeland Act, as amended (48 Stat. 948, 63 Stat. 108, 72 Stat. 967; 76 Stat. 357; 40 U.S.C. 3145), and described below:

(2) That any payrolls otherwise under this contract required to be submitted for the above period are correct and complete; that the wage rates for laborers or mechanics contained therein are not less than the applicable wage rates contained in any wage determination incorporated into the contract; that the classifications set forth therein for each laborer or mechanic conform with the work he performed.

(4) That

(a) WHERE FRINGE BENEFITS ARE PAID TO APPROVED PLANS, FUNDS, OR PROGRAMS

☐ - In addition to the basic hourly wage rates paid to each laborer or mechanic listed in the above referenced payroll, payments of fringe benefits as listed in the contract have been or will be made to appropriate programs for the benefit of such employees, except as noted in section 4(c) below.

☒ - Each laborer or mechanic listed in the above referenced payroll has been paid, as indicated on the payroll, an amount not less than the sum of the applicable basic hourly wage rate plus the amount of the required fringe benefits as listed in the contract, except as noted in section 4(c) below.

EXCEPTION (CRAFT)	EXPLANATION
REMARKS:	
NAME AND TITLE	SIGNATURE
Melissa Gamez Payroll Coordinator	<i>Melissa Gamez</i>

THE WILLFUL FALSIFICATION OF ANY OF THE ABOVE STATEMENTS MAY SUBJECT THE CONTRACTOR OR SUBCONTRACTOR TO CIVIL OR CRIMINAL PROSECUTION. SEE SECTION 1001 OF TITLE 18 AND SECTION 231 OF TITLE 31 OF THE UNITED STATES CODE.

Page: 5 of 5
Date: Jul 07, 2025
Time: 3:19 PM EDT

Report Parameters

Company:	110	Pay Group Code:		Run Time:	3:19 PM EDT	
Pay Run:	W	From Period:	24	Run Date:	Jul 07, 2025	
Year:	2025	To Period:	24	Report Code:	PY1096	27 10 2020
From Job:	2289	Job Company:		Operator:	MGAMEZ	
To Job:	2289	Fringe	All Projects Hours	Total Pages:	5	
		Print Fringe	N			

Page: 1 of 5
Date: Jul 07, 2025
Time: 12:39 PM EDT

			NAME OF CONTRACTOR : Rylee Construction Resources CONTRACTOR'S LICENSE NO: OR SUBCONTRACTOR : SPECIALTY LICENSE NO: CONTRACTOR JOB NUMBER: 2289													ADDRESS: 1901 Hollister Street, Houston, TX, 77080																													
		PAYROLL No.		FOR WEEK ENDING: 15-JUN-25													SELF-INSURED CERTIFICATE NO: WORKER'S COMPENSATION POLICY NO: FEIN: 76-0516513													PROJECT OR CONTRACT NO: 2289 PROJECT AND LOCATION: East Branch Storm Water Detention Basin Expansion															
(1) Name, Address and SSN of Employee	(2) Exempt ions	(3) Work Classification	(4) DAY													(5) Total Hours	(6) Hourly Rate of Pay	(7)													(8)													(9)	
			M	T	W	TH	F	S	S	DATE								GROSS AMOUNT EARNED	ALL PROJECTS	Fed. Tax	FICA	Local/ State tax	SDI	Vacation Holiday	Total Benefits	Total Deduction	Net Wages Paid for Wages	Check No.																	
			09	10	11	12	13	14	15	HOURS WORKED EACH DAY																																			
Amaya, Jose 16506 Sinaloa Dr Houston, TX 77083 *****9491		Excavator Op	BT	10	4	2	7	0	9	33	27.00	THIS PROJECT	ALL PROJECTS	Fed. Tax	FICA	Local/ State tax	SDI	Vacation Holiday	Total Benefits	Total Deduction	755.12	14502																							
												891.00	891.00	67.72	68.16	0.00	0.00	0.00	0.00	135.88																									
												HOURS	HOURS	Training	Fund Admin	Dues	Travel Subs.	Savings	Health & Well.	Pension																									
												33	33	0.00	0.00	0.00	0.00	0.00	0.00	0.00																									
DeSantiago-Juarez, Rodrigo 2011 Sadler St. Houston, TX 77093 *****621	3	Concrete Finish	BT	0	9	0	0	0	11	0	20	17.00	THIS PROJECT	ALL PROJECTS	Fed. Tax	FICA	Local/ State tax	SDI	Vacation Holiday	Total Benefits	Total Deduction	547.67	14566																						
												340.00	595.00	1.81	45.52	0.00	0.00	0.00	0.00	47.33																									
												HOURS	HOURS	Training	Fund Admin	Dues	Travel Subs.	Savings	Health & Well.	Pension																									
												20	35	0.00	0.00	0.00	0.00	0.00	0.00	0.00																									
Fuente-Amaya, Luis 16506 Sinaloa Dr Houston, TX 77083 *****9349		Bulldozer Op	BT	0	0	0	0	0	3.5	0	3.5	36.75	THIS PROJECT	ALL PROJECTS	Fed. Tax	FICA	Local/ State tax	SDI	Vacation Holiday	Total Benefits	Total Deduction	929.98	14601																						
			BT	10	10	10	5	5	4.5	0	5	40	24.50	1,108.63	1,108.63	93.83	84.82	0.00	0.00	0.00	0.00	172.95																							
												HOURS	HOURS	Training	Fund Admin	Dues	Travel Subs.	Savings	Health & Well.	Pension																									
												43.5	43.5	0.00	0.00	0.00	0.00	0.00	0.00	0.00																									
Morales, Roger 12066 Sinala Lane Apt B1, Houston, TX 77072 *****9058		Pipe Layer Help	BT	10	10	4	2	7	0	5	33	18.50	THIS PROJECT	ALL PROJECTS	Fed. Tax	FICA	Local/ State tax	SDI	Vacation Holiday	Total Benefits	Total Deduction	563.80	14720																						
												610.50	610.50	46.70	0.00	0.00	0.00	0.00	0.00	46.70																									
												HOURS	HOURS	Training	Fund Admin	Dues	Travel Subs.	Savings	Health & Well.	Pension																									
												33	33	0.00	0.00	0.00	0.00	0.00	0.00	0.00																									
Paz-Marquez, Santos 8311 Winkler Dr Apt 50, Houston, TX 77017 *****5466		Pipe Layer Help	BT	0	0	0	0	0	8	0	8	19.50	THIS PROJECT	ALL PROJECTS	Fed. Tax	FICA	Local/ State tax	SDI	Vacation Holiday	Total Benefits	Total Deduction	684.32	14753																						
												156.00	741.00	56.68	0.00	0.00	0.00	0.00	0.00	56.68																									
												HOURS	HOURS	Training	Fund Admin	Dues	Travel Subs.	Savings	Health & Well.	Pension																									
												8	38	0.00	0.00	0.00	0.00	0.00	0.00	0.00																									

Page: 2 of 5
Date: Jul 07, 2025
Time: 12:39 PM EDT

			NAME OF CONTRACTOR : Raytek Construction Resources CONTRACTOR'S LICENSE NO: OR SUBCONTRACTOR : SPECIALTY LICENSE NO: CONTRACTOR JOB NUMBER : 2289														ADDRESS: 1901 Hollister Street, Houston, TX, 77080																							
PAYROLL No.			FOR WEEK ENDING: 15-JUN-25														SELF-INSURED CERTIFICATE NO: WORKER'S COMPENSATION POLICY NO: FEIN: 76-0516513										PROJECT OR CONTRACT NO: 2289 PROJECT LOCATION AND LOCATION: Bear Branch Storm Water Detention Basin Expansion													
(1) Name, Address and SSN of Employee	(2) Exempt Items	(3) Work Classification	(4) DAY														(5) Total Hours	(6) Hourly Rate of Pay	(7)										(8)										(9)	
			DATE																GROSS AMOUNT EARNED										DEDUCTIONS, CONTRIBUTIONS AND PAYMENTS										Net Wages Paid for Weeks	Check No.
			M	T	W	TH	F	S	S										THIS PROJECT	ALL PROJECTS	Fed. Tax	FICA	Local/ State Tax	SDI	Vacation Holiday	Total Benefits	Total Deduction													
HOURS WORKED EACH DAY																																								
														09	10	11	12	13	14	15								HOURS	HOURS	Training	Fund Admin	Dues	Travel Subs.	Savings	Health & Welf.	Pension				
Paz, Jose 8311 Winkler Dr #69, Houston, TX 77017 ****6631		Pipe Layer	ST	10	0	0	0	0	8	0	0	18								21.00			THIS PROJECT	ALL PROJECTS	Fed. Tax	FICA	Local/ State Tax	SDI	Vacation Holiday	Total Benefits	Total Deduction	736.95	14751							
				378.00	796.00											61.05											0.00	61.05												
				HOURS	HOURS	Training	Fund Admin	Dues	Travel Subs.	Savings	Health & Welf.	Pension																												
				18	38	0.00	0.00	0.00	0.00	0.00	0.00	0.00																												
																		48	62	0.00			0.00	0.00	0.00	0.00	0.00													
																		48	62	0.00			0.00	0.00	0.00	0.00	0.00													
Perez-Barrera, Marco 25647 Ipes Rd. Splendora, TX 77372 ****7832		Pipe Layer	OT	0	0	0	0	0	6	8	8	22								28.50			THIS PROJECT	ALL PROJECTS	Fed. Tax	FICA	Local/ State Tax	SDI	Vacation Holiday	Total Benefits	Total Deduction	1,252.41	14757							
				1,121.00	1,387.00											106.10											0.00	134.59												
				HOURS	HOURS	Training	Fund Admin	Dues	Travel Subs.	Savings	Health & Welf.	Pension																												
				48	62	0.00	0.00	0.00	0.00	0.00	0.00	0.00																												
																		48	62	0.00			0.00	0.00	0.00	0.00	0.00													
																		48	62	0.00			0.00	0.00	0.00	0.00	0.00													
Rivas-Castro, Jose 462 Country Road 3479J Cleveland, TX 77327 ****7018		Pipe Layer	ST	0	10	10	5	5	8	0	0	33.5								23.00			THIS PROJECT	ALL PROJECTS	Fed. Tax	FICA	Local/ State Tax	SDI	Vacation Holiday	Total Benefits	Total Deduction	711.56	14780							
				770.50	770.50											58.94											0.00	58.94												
				HOURS	HOURS	Training	Fund Admin	Dues	Travel Subs.	Savings	Health & Welf.	Pension																												
				33.5	33.5	0.00	0.00	0.00	0.00	0.00	0.00	0.00																												
																		342.00	608.00	46.11														0.00	514.42					
																		342.00	608.00	46.11														0.00	514.42					
Tejeda, Oscar 8311 Winkler Dr #69, Houston, TX 77017 ****6445		Pipe Layer Help	ST	10	0	0	0	0	8	0	0	18								19.00			THIS PROJECT	ALL PROJECTS	Fed. Tax	FICA	Local/ State Tax	SDI	Vacation Holiday	Total Benefits	Total Deduction	556.58	14828							
				342.00	608.00											46.11											0.00	514.42												
				HOURS	HOURS	Training	Fund Admin	Dues	Travel Subs.	Savings	Health & Welf.	Pension																												
				18	32	0.00	0.00	0.00	0.00	0.00	0.00	0.00																												
																		342.00	608.00	46.11														0.00	514.42					
																		342.00	608.00	46.11														0.00	514.42					
Jimenez-Tovar, Cesar 7520 Plum Creek Dr #4605, Houston, TX 77012 ****1697		Excavator Op	ST	10	10	4	0	8	0	0	32								27.50			THIS PROJECT	ALL PROJECTS	Fed. Tax	FICA	Local/ State Tax	SDI	Vacation Holiday	Total Benefits	Total Deduction	788.14	14660								
				890.00	890.00											30.31	67.32											0.00	5.77	97.63										
				HOURS	HOURS	Training	Fund Admin	Dues	Travel Subs.	Savings	Health & Welf.	Pension																												
				32	32	0.00	0.00	0.00	0.00	0.00	0.00	0.00																												
																		342.00	608.00			46.11											0.00	514.42						
																		342.00	608.00			46.11											0.00	514.42						

Page: 3 of 5
Date: Jul 07, 2025
Time: 12:39 PM EDT

		NAME OF CONTRACTOR : Retyec Construction Resources CONTRACTOR'S LICENSE NO: OR SUBCONTRACTOR: SPECIALTY LICENSE NO: 2289 CONTRACTOR JOB NUMBER: 2289														ADDRESS: 1901 Hollister Street, Houston, TX 77080																																							
		PAYROLL No.		FOR WEEK ENDING: 15-JUN-25														SELF-INSURED CERTIFICATE NO: WORKER'S COMPENSATION POLICY NO: FEIN: 76-056513										PROJECT OR CONTRACT NO: 2289 PROJECT AND LOCATION: Briar Branch Storm Water Detention Basin Expansion																											
				(4) DAY														(5)		(6)																																			
				M T W T F S S S														DATE		Total Hours		Hourly Rate of Pay		(7) GROSS AMOUNT EARNED														(8) DEDUCTIONS, CONTRIBUTIONS AND PAYMENTS														(9) Net Wages Paid for Week		Check No.	
				09 10 11 12 13 14 15														HOURS WORKED EACH DAY				THIS PROJECT ALL PROJECTS														Fed. Tax FICA Local/State tax SDI Vacation Holiday Total Benefits Total Deduction																			
(1) Name, Address and SSN of Employee	(2) Exempt ions	(3) Work Classification	Laborer Common	ST	11	10	9	8	7	6	5	4	3	2	1	0	33	16.00	528.00 528.00 24.16 40.40														0.00 64.56														463.44	14842							
																			HOURS HOURS Training Fund Admin Dues Travel Subs Savings Health & Well Pension														33 33 0.00 0.00 0.00 0.00 0.00 0.00																						
Zetino-Contreras, Saul 4607 Sherwood Lane, #754, Houston, TX 77092 ****7523		Laborer Common	ST	11	10	9	8	7	6	5	4	3	2	1	0	40	16.00	976.00 976.00 0.36 74.26														0.00 79.93														896.07	14858								
																		HOURS HOURS Training Fund Admin Dues Travel Subs Savings Health & Well Pension														54 54 0.00 0.00 0.00 0.00 0.00 0.00																							
																		THIS PROJECT TOTAL		374		8,101.63																																	

Page: 4 of 5
Date: Jul 07, 2025
Time: 12:39 PM EDT

[illegible]

PAYROLL REPORTING

Page: 5 of 5
Date: Jul 07, 2025
Time: 12:39 PM EDT

PAYROLL REPORTING

Page: 1 of 4
Date: Jul 07, 2025
Time: 12:41 PM EDT

Report Parameters			
Company:	110	Pay Group Code:	Run Time: 12:39 PM EDT
Pay Run:	W	From Period: 25	Run Date: Jul 07, 2025
Year:	2025	To Period: 25	Report Code: PY1096 27 10 2020
From Job:	2289	Job Company:	Operator: MGAMEZ
To Job:	2289	Fringe	Total Pages: 5
		Print Fringe	N

			NAME OF CONTRACTOR : Ryleec Construction Resources CONTRACTOR'S LICENSE NO: ADDRESS: 1901 Hollister Street, Houston, TX, 77080 OR SUBCONTRACTOR : SPECIALTY LICENSE NO: CONTRACTOR JOB NUMBER: 2289																							
PAYROLL No.			FOR WEEK ENDING: 22-JUN-25										SELF-INSURED CERTIFICATE NO: WORKER'S COMPENSATION POLICY NO: FEIN: 76-0516513				PROJECT OR CONTRACT NO: 2289 PROJECT AND LOCATION: Blar Branch Storm Water Detention Basin Expansion									
(1) Name, Address and SSN of Employee	(2) Exempt ions	(3) Work Classification	(4) DAY							(5) Total Hours	(6) Hourly Rate of Pay	(7) GROSS AMOUNT EARNED	(8) DEDUCTIONS, CONTRIBUTIONS AND PAYMENTS								(9) Net Wages Paid for Week		Check No.			
			DATE																							
			M	T	W	TH	F	S	S																	
			16	17	18	19	20	21	22																	
HOURS WORKED EACH DAY																										
Amaya, Jose 16506 Sinaloa Dr. Houston, TX 77083 ***9491		Excavator Op	OT	0	0	0	0	9	0	0	9	40.50	THIS PROJECT	ALL PROJECTS	Fed. Tax	FICA	Local/ State tax	SDI	Vacation Holiday	Total Benefits	Total Deduction	1,177.47	14875			
			ST	10	10	10	10	0	0	0	40	27.00	1,444.50	1,444.50	156.52	110.51			0.00	267.03						
													HOURS	HOURS	Training	Fund Admin	Dues	Travel Subs	Savings	Health & Welf.	Pension					
DeSantiago-Juarez, Rodrigo 2011 Sadler St. Houston, TX 77093 ***1621	3	Concrete Finishe	OT	0	0	0	0	2	0	0	2	25.50	THIS PROJECT	ALL PROJECTS	Fed. Tax	FICA	Local/ State tax	SDI	Vacation Holiday	Total Benefits	Total Deduction	659.67	14939			
			ST	0	8	0	0	7	0	0	15	17.00	306.00	731.00	15.41	55.92			0.00	71.33						
													HOURS	HOURS	Training	Fund Admin	Dues	Travel Subs	Savings	Health & Welf.	Pension					
Fuentes-Amaya, Luis 16506 Sinaloa Dr. Houston, TX 77083 ***9349		Bulldozer Op	OT	0	0	0	6	12	0	0	18	36.75	THIS PROJECT	ALL PROJECTS	Fed. Tax	FICA	Local/ State tax	SDI	Vacation Holiday	Total Benefits	Total Deduction	1,316.07	14974			
			ST	10	12	12	0	0	0	0	40	24.50	1,641.50	1,641.50	199.86	125.57			0.00	325.43						
													HOURS	HOURS	Training	Fund Admin	Dues	Travel Subs	Savings	Health & Welf.	Pension					
Morales, Roger 12066 Sela Lane Apt B1, Houston, TX 77072 ***8058		Pipe Layer Help	OT	0	0	0	0	9	0	0	9	27.75	THIS PROJECT	ALL PROJECTS	Fed. Tax	FICA	Local/ State tax	SDI	Vacation Holiday	Total Benefits	Total Deduction	914.04	15093			
			ST	10	10	10	10	0	0	0	40	18.50	989.75	989.75		75.71			0.00	75.71						
													HOURS	HOURS	Training	Fund Admin	Dues	Travel Subs	Savings	Health & Welf.	Pension					
Rivas-Castro, Jose 462 Country Road 3479J Cleveland, TX 77327 ***0018		Pipe Layer	OT	0	0	0	4	11	0	0	15	34.50	THIS PROJECT	ALL PROJECTS	Fed. Tax	FICA	Local/ State tax	SDI	Vacation Holiday	Total Benefits	Total Deduction	1,327.53	15156			
			ST	10	12	11	7	0	0	0	40	23.00	1,437.50	1,437.50		109.97			0.00	109.97						
													HOURS	HOURS	Training	Fund Admin	Dues	Travel Subs	Savings	Health & Welf.	Pension					

Page: 2 of 4
Date: Jul 07, 2025
Time: 12:41 PM EDT

			NAME OF CONTRACTOR : Rylee Construction Resources CONTRACTOR'S LICENSE NO: OR SUBCONTRACTOR SPECIALTY LICENSE NO:														ADDRESS: 1901 Hollister Street, Houston, TX, 77060																
			CONTRACTOR JOB NUMBER: 2289																														
PAYROLL No.			FOR WEEK ENDING: 22-JUN-25														SELF-INSURED CERTIFICATE NO: WORKERS COMPENSATION POLICY NO:																
			(4) DAY														(5)	(6)	PROJECT OR CONTRACT NO: 2289 PROJECT AND LOCATION: Blair Branch Storm Water Detention Basin Expansion														
			DATE														Total	Hourly Rate of Pay	(7)		(8)						(9)						
			M	T	W	TH	F	S	S								GROSS AMOUNT EARNED		DEDUCTIONS, CONTRIBUTIONS AND PAYMENTS						Net Wages Paid for Week	Check No.							
			16	17	18	19	20	21	22																								
			HOURS WORKED EACH DAY																														
(1) Name, Address and SSN of Employee	(2)	(3) Work Classification	OT	0	0	0	0	4	0	0	0	0	14	24.00	THIS PROJECT	ALL PROJECTS	Fed. Tax	FICA	Local/ State tax	SDI	Vacation/Holiday	Total Benefits	Total Deduction	823.42	15218								
				ST	10	10	12	8	0	0	0	40	16.00	HOURS												HOURS	Training	Fund Admin	Dues	Travel Subs	Savings	Health & Well	Pension
Vasquez-Avareiz, Noel 505 Thornton Rd. #754, Houston, TX 77018 ***4609	Laborer Common	OT	0	0	0	0	4	0	0	0	0	14	24.00	THIS PROJECT	ALL PROJECTS	Fed. Tax	FICA	Local/ State tax	SDI	Vacation/Holiday	Total Benefits	Total Deduction	823.42	15218									
			ST	10	10	12	8	0	0	0	40	16.00	HOURS												HOURS	Training	Fund Admin	Dues	Travel Subs	Savings	Health & Well	Pension	
Zetino-Conterosas, Saul 4607 Sherwood Lane, #754, Houston, TX 77092 ***7523	Laborer Common	OT	0	0	0	0	6	12	9	0	27	24.00	THIS PROJECT	ALL PROJECTS	Fed. Tax	FICA	Local/ State tax	SDI	Vacation/Holiday	Total Benefits	Total Deduction	1,140.56	15234										
			ST	10	10	12	6	0	0	0	40	16.00												HOURS	HOURS	Training	Fund Admin	Dues	Travel Subs	Savings	Health & Well	Pension	
THIS PROJECT TOTAL														349	8,083.25																		

Page: 3 of 4
Date: Jul 07, 2025
Time: 12:41 PM EDT

[illegible]

Page: 4 of 4
Date: Jul 07, 2025
Time: 12:41 PM EDT

Report Parameters					
Company:	110	Pay Group Code:		Run Time:	12:41 PM EDT
Pay Run:	W	From Period:	26	Run Date:	Jul 07, 2025
Year:	2025	To Period:	26	Report Code:	PY1096
From Job:	2289	Job Company:		Operator:	MGAMEZ
To Job:	2289	Fringe	All Projects Hours	Total Pages:	4
		Print Fringe	N		

Page: 1 of 4
Date: Jul 07, 2025
Time: 12:42 PM EDT

		NAME OF CONTRACTOR : Raytec Construction Resources CONTRACTOR'S LICENSE NO: OR SUBCONTRACTOR : SPECIALTY LICENSE NO: CONTRACTOR JOB NUMBER: 2289														ADDRESS: 1901 Hollister Street, Houston, TX, 77080																																											
PAYROLL No.		FOR WEEK ENDING: 29-JUN-25														SELF-INSURED CERTIFICATE NO: WORKERS' COMPENSATION POLICY NO: FEIN: 78-0516513										PROJECT OR CONTRACT NO: 2289 PROJECT AND LOCATION: Briar Branch Storm Water Detention Basin Expansion																																	
		(4) DAY														(5)										(6)																																	
		M	T	W	Th	F	S	S	Total Hours			Hourly Rate of Pay										GROSS AMOUNT EARNED										DEDUCTIONS, CONTRIBUTIONS AND PAYMENTS										Net Wages Paid for Week										Check No.							
(1)		(2)		(3)		DATE		23		24		25		26		27		28		29		HOURS WORKED EACH DAY		THIS PROJECT		ALL PROJECTS		Fed. Tax		FICA		Local/ State tax		SDI		Vacation Holiday		Total Benefits		Total Deduction																			
Amaya, Jose 16506 Sinaloa Dr. Houston, TX 77063 ****9491		Excavator Op		OT		0	0	0	0	0	0	0	0	0	0	0	0	0	0	0	0	0	40.50	THIS PROJECT		ALL PROJECTS		1,323.00		1,323.00		129.78		101.21		0.00		0.00		231.00		1,092.00		15251															
				ST		8	10	10.5	8.5	3	0	0	0	0	0	0	0	0	0	0	0	0	27.00	HOURS		HOURS		Training		Fund Admin		Dues		Travel Subs.		Savings		Health & Well		Pension																			
DeSantiago-Juarez, Rodrigo 2011 Sadler St. Houston, TX 77093 ****1621		3 Concrete Finish		ST		0	8	0	0	0	8	0	0	0	0	0	0	0	0	0	0	0	17.00	THIS PROJECT		ALL PROJECTS		272.00		680.00		10.31		52.02		0.00		0.00		62.33		617.67		15314															
						HOURS		HOURS		Training		Fund Admin		Dues		Travel Subs.		Savings		Health & Well		Pension																																					
Fuentes-Amaya, Luis 16506 Sinaloa Dr. Houston, TX 77063 ****9349		Bulldozer Op		OT		0	0	0	0	0	0	0	0	0	0	0	0	0	0	0	0	36.75	THIS PROJECT		ALL PROJECTS		1,163.75		1,163.75		100.45		89.02		0.00		0.00		189.47		974.28		15349																
				ST		8	10	10	8	4	0	0	0	0	0	0	0	0	0	0	0	0	24.50	HOURS		HOURS		Training		Fund Admin		Dues		Travel Subs.		Savings		Health & Well		Pension																			
Morales, Roger 12066 Sela Lane Apt B1, Houston, TX 77072 ****8058		Pipe Layer Help		OT		0	0	0	0	0	0	0	0	0	0	0	0	0	0	0	0	27.75	THIS PROJECT		ALL PROJECTS		906.50		906.50		69.34		0.00		0.00		0.00		0.00		69.34		837.16		15469														
				ST		8	10	10.5	8.5	3	0	0	0	0	0	0	0	0	0	0	0	18.50	HOURS		HOURS		Training		Fund Admin		Dues		Travel Subs.		Savings		Health & Well		Pension																				
Rivas-Castro, Jose 462 Co Country Road 3478J Cleveland, TX 77327 ****0018		Pipe Layer		OT		0	0	0	0	0	6.5	0	0	0	6.5	0	0	0	0	0	0	34.50	THIS PROJECT		ALL PROJECTS		1,144.25		1,144.25		87.53		0.00		0.00		0.00		0.00		87.53		1,056.72		15530														
				ST		8	10	10.5	9	2.5	0	0	0	0	0	0	0	0	0	0	0	23.50	HOURS		HOURS		Training		Fund Admin		Dues		Travel Subs.		Savings		Health & Well		Pension																				

Page: 2 of 4
Date: Jul 07, 2025
Time: 12:42 PM EDT

			NAME OF CONTRACTOR : Rylee Construction Resources CONTRACTOR'S LICENSE NO: OR SUBCONTRACTOR : SPECIALTY LICENSE NO: CONTRACTOR JOB NUMBER: 2299													ADDRESS: 1901 Hollister Street, Houston, TX, 77080																					
		PAYROLL No.		FOR WEEK ENDING: 29-JUN-25										SELF-INSURED CERTIFICATE NO: FEIN: 76-0516513										PROJECT OR CONTRACT NO: 2299 PROJECT LOCATION & LOCATION: Briar Branch Storm Water Detention Basin Expansion													
				(4) DAY										(5)	(6)	(7)										(8)										(9)	
				M	T	W	TH	F	S	S	Total Hours	Hourly Rate of Pay	GROSS AMOUNT EARNED				DEDUCTIONS, CONTRIBUTIONS AND PAYMENTS						Net Wages for Week		Check No.												
(1) Name, Address and SSN of Employee		(2) Exempt ions	(3) Work Classification	DATE																																	
				23	24	25	26	27	28	29																											
				HOURS WORKED EACH DAY																																	
Vasquez-Alvarez, Nae 505 Thornton Rd. #14, Houston, TX 77018 ****4609			Laborer Common	BT	8	10	0	0	0	0	0	36	16.50	THIS PROJECT ALL PROJECTS				Fed. Tax	FICA	Local/ State tax	SDI	Vacation Holiday	Total Benefits	Total Deduction	502.02	15593											
Zelino-Contreras, Saul 4670 Sherwood Lane, 7884 Houston, TX 77092 ****7523			Laborer Common	OY	0	0	0	0	6.5	0	0	6.5	24.00	THIS PROJECT ALL PROJECTS				Fed. Tax	FICA	Local/ State tax	SDI	Vacation Holiday	Total Benefits	Total Deduction	730.20	15609											
				BT	8	10	10.5	9	2.5	0	0	40	16.00																								
				THIS PROJECT TOTAL										282	6,181.50																						

Page: 3 of 4
Date: Jul 07, 2025
Time: 12:42 PM EDT

1. July 07, 2025

 Melissa Gamez
(Name of Signatory Party)

 Payroll Coordinator
(Title)

do hereby state:

(1) That I pay or supervise the payment of the persons employed by
 Rytelec Construction Resources on the
 (Contractor or Subcontractor)
 Briar Branch Storm Water , that during the payroll period commencing on the
 (Building or Work)
 23rd day of June 2025 , and ending the 29th day of June 2025 ,
all persons employed on said project have been paid the full weekly wages earned, that no rebates have
been or will be made either directly or indirectly to or on behalf of said
 Rytelec Construction Resources from the full
 (Contractor or Subcontractor)
weekly wages earned by any person and that no deductions have been made either directly or indirectly from
the full wages earned by any person, other than permissible deductions as defined in Regulations, Part 3 (29
C.F.R. Subtitle A), issued by the Secretary of Labor under the Copeland Act, as amended (48 Stat. 946, 63
Stat. 108, 72 Stat. 967, 76 Stat. 397, 40 U.S.C. 3145), and described below.

Deductions are based on gross wages and include but are not limited to: Federal Withholding, FICA, Medicare, State Withholding, State Disability Insurance, Union Deductions, Child Support or Other Garnishments

(2), that any payrolls otherwise under this contract required to be submitted for the above period are correct and
complete, that the wage rates for laborers or mechanics contained herein are not less than the applicable wage
rates contained in any wage determination incorporated into the contract; that the classifications set forth therein for
each laborer or mechanic conform with the work he performed.

(3) That any apprentices employed in the above period are duly registered in a bona fide apprenticeship program
registered with a State apprenticeship agency recognized by the Bureau of Apprenticeship and Training, United
States Department of Labor, or if no such recognizing agency exists in a State, are registered with the Bureau of
Apprenticeship and Training, United States Department of Labor.

(4) That:

(a) WHERE FRINGE BENEFITS ARE PAID TO APPROVED PLANS, FUNDS, OR PROGRAMS

(b) WHERE FRINGE BENEFITS ARE PAID IN CASH
☒ Each laborer or mechanic listed in the above referenced payroll
has been paid, as indicated on the payroll, an amount not less
than the sum of the applicable basic hourly wage rate plus the
amount of the required fringe benefits as listed in the contract,
except as noted in section 4(c) below.

(c) EXCEPTIONS

EXCEPTION (CRAFT)	EXPLANATION

REMARKS:

NAME AND TITLE	SIGNATURE
Melissa Gamez Payroll Coordinator	<i>Melissa Gamez</i>

THE WILLFUL FALSIFICATION OF ANY OF THE ABOVE STATEMENTS MAY
SUBJECT THE CONTRACTOR OR SUBCONTRACTOR TO CIVIL OR CRIMINAL
PROSECUTION. SEE SECTION 1001 OF TITLE 18 AND SECTION 231 OF TITLE
31 OF THE UNITED STATES CODE.

PAYROLL REPORTING

Page: 4 of 4
Date: Jul 07, 2025
Time: 12:42 PM EDT

Report Parameters

Company:	110	Pay Group Code:		Run Time:	12:42 PM EDT
Pay Run:	W	From Period:	27	Run Date:	Jul 07, 2025
Year:	2025	To Period:	27	Report Code:	PY1096 27-10-2020
From Job:	2289	Job Company:		Operator:	MGAMEZ
To Job:	2289	Fringe	All Projects Hours	Total Pages:	4
		Print Fringe	N		

U.S. Department of Labor Davis-Bacon and Related Acts Weekly Certified Payroll Form
Wage and Hour Division (For Contractor's Optional Use; See Instructions at www.dol.gov/whd/forms/wh347instr.htm)

Unless otherwise noted, the information requested is specific to the named project below.
Persons are not required to respond to the collection of information unless it displays a currently valid OMB control number.

☐ SUBMISSION OF FINAL DBRA CERTIFIED PAYROLL FORM ☐ PRIME CONTRACTOR ☒ SUBCONTRACTOR

PROJECT NAME		PROJECT NO. or CONTRACT NO.		CERTIFIED PAYROLL NO.		PRIME CONTRACTOR'S/SUBCONTRACTOR'S BUSINESS NAME										
Briar Branch Storm Water Detention Basin		N-T17000-0021-3		001		Moran Construction LLC										
PROJECT LOCATION		WAGE DETERMINATION NO.		WEEK ENDING DATE		PRIME CONTRACTOR'S/SUBCONTRACTOR'S BUSINESS ADDRESS										
Houston, Texas				06/14/2025		2509 Lynnfield St, Houston, TX 77093										
(1A)	(1B)	(1C)	(1D)	(1E)	(2)	(3)	(4)	(5)	(6A)	(6B)	(6C)	(7A)	(7B)	(8)	(9)	
WORKER ENTRY NO.	WORKER LAST NAME	WORKER FIRST NAME	WORKER MIDDLE INITIAL	WORKER IDENTIFYING NO.	(J) JOURNEYWORKER (RA) REGISTERED APPRENTICE	LABOR CLASSIFICATION	ST = STRAIGHT TIME OT = OVERTIME	(TOP) DAYS OF WORK WEEK (BOTTOM) DATES	TOTAL HOURS WORKED FOR WEEK	HOURLY WAGE RATE PAID FOR ST AND OT	TOTAL FRINGE BENEFIT CREDIT	PAYMENT IN LIEU OF FRINGE BENEFITS	GROSS AMT EARNED	GROSS AMT EARNED FOR ALL WORK	DEDUCTIONS FOR ALL WORK	NET PAY TO WORKER FOR ALL WORK
								S M T W T F S								
								8 9 10 11 12 13 14								
								HOURS WORKED EACH DAY								
							ST	10	10	5	2	7	6			
	Moran	Ivan	P	X9514		Supervisor	OT									
							ST	8	9	4	1	5				
	Castillo	Nelson	P	X5429		Laborer	OT									
							ST	2	9	4	2	6				
	Cardoza	Joel		X4475		Excavator Operator	OT									
							ST	9	10	5	0	6				
	Martinez	Jesus		X0225		Concrete Finisher	OT									
							ST									
							OT									
							ST									
							OT									
							ST									
							OT									
							ST									
							OT									

While use of Form WH-347 itself is optional, covered contractors and subcontractors performing work on Federal or federally assisted construction contracts are required by the DBRA regulations and the contract clauses to submit payroll information on a weekly basis. The Copeland Act (40 U.S.C. § 3145) requires contractors and subcontractors performing work on Federal or federally financed construction contracts to, on a weekly basis, "furnish a statement on the wages paid each employee during the prior week." U.S. Department of Labor (DOL) Regulations at 29 C.F.R. § 5.5(a)(3)(ii) require contractors and subcontractors to submit weekly certified payrolls to the appropriate Federal agency if the agency is a party to the contract (or, if the agency is not such a party, to the applicant, sponsor, owner, or other entity, as the case may be, that maintains such records, for transmission to the Federal agency). Each certified payroll must be accompanied by a signed "Statement of Compliance" (e.g., page 2 of the WH-347 or another document with identical wording) indicating that the certified payrolls are accurate and complete, and that each laborer or mechanic has been paid not less than the required Davis-Bacon prevailing wage rate(s) (including any fringe benefits) for the work performed. DOL and contracting agencies receiving this information review the information to determine whether workers have received legally required wages and fringe benefits.

Public Burden Statement

We estimate that it will take an average of 55 minutes to complete this collection, including time for reviewing instructions, searching existing data sources, gathering and maintaining the data needed, and completing and reviewing the collection of information. If you have any comments regarding these estimates or any other aspect of this collection, including suggestions for reducing this burden, send them to the Administrator, Wage and Hour Division, U.S. Department of Labor, Room S3502, 200 Constitution Avenue, N.W. Washington, D.C. 20210.

PROJECT NAME	PROJECT NO. or CONTRACT NO.	PAYROLL NO.	PRIME CONTRACTOR'S/SUBCONTRACTOR'S BUSINESS NAME				
Briar Branch Storm Water Detention Basin	N-T17000-0021-3	2289-01	Moran Construction LLC				
PROJECT LOCATION	WEEK ENDING DATE	CERTIFYING OFFICIAL'S NAME AND TITLE					
Houston, TX 77093	6/28/2025	Lorena Ochoa, Project Manager					
I paid or supervised the payment of the laborers or mechanics working on the above project during the stated time period. I certify the following:							
<input checked="" type="checkbox"/> The payroll information submitted with this statement is correct and complete for the above project during the above period, and the wage and fringe benefit rates paid to the workers, including credit taken for the reasonably anticipated costs of a bona fide fringe benefit plan, fund or program, are not less than the applicable wage and fringe benefits rates for the classification(s) of work actually performed, as specified in the wage determination(s) incorporated into the contract.							
<input checked="" type="checkbox"/> All regular payrolls and all other basic records that the contractor is required to maintain for this payroll period are complete and accurate and will be made available upon request from the agency or the Department of Labor.							
<input checked="" type="checkbox"/> The classifications reported for each laborer or mechanic are the classification(s) of work that each worker actually performed.							
<input checked="" type="checkbox"/> Any workers paid as apprentices during the above period are duly registered in a bona fide apprenticeship program registered with the Office of Apprenticeship, Employment and Training Administration, United States Department of Labor ("OAT"), or a State Apprenticeship Agency ("SAA") recognized by Department of Labor. I have verified the registered apprenticeship program information provided below as accurate and applicable to any apprentices identified on page 1 of this form.							
APPRENTICESHIP PROGRAM NAME		REGISTERED	NAME OF LABOR CLASSIFICATION				
		<input type="checkbox"/> OA <input type="checkbox"/> SAA					
		<input type="checkbox"/> OA <input type="checkbox"/> SAA					
		<input type="checkbox"/> OA <input type="checkbox"/> SAA					
<input type="checkbox"/> Fringe benefits have been paid in cash and/or to bona fide fringe benefit plans, funds, or programs. Where the contractor is claiming an hourly credit for their contributions to or reasonably anticipated costs of a bona fide fringe benefit plan, fund, or program, provide plan information and the hourly credit claimed for each worker listed on the previous page of this form.							
HOURLY CREDIT FOR FRINGE BENEFITS							
If an amount is listed in (68) on the first page of this certified payroll form, enter the hourly credit claimed under each plan name, type and number for each worker and check whether the plan is funded or unfunded.							
NAME OF WORKER	FB NAME	FB NAME	FB NAME	FB NAME	FB NAME	FB NAME	TOTAL HOURLY CREDIT
	FB TYPE	FB TYPE	FB TYPE	FB TYPE	FB TYPE	FB TYPE	
	PLAN NO.	PLAN NO.	PLAN NO.	PLAN NO.	PLAN NO.	PLAN NO.	
	<input type="checkbox"/> Funded <input type="checkbox"/> Unfunded	<input type="checkbox"/> Funded <input type="checkbox"/> Unfunded	<input type="checkbox"/> Funded <input type="checkbox"/> Unfunded	<input type="checkbox"/> Funded <input type="checkbox"/> Unfunded	<input type="checkbox"/> Funded <input type="checkbox"/> Unfunded	<input type="checkbox"/> Funded <input type="checkbox"/> Unfunded	
	Hourly Credit \$	Hourly Credit \$	Hourly Credit \$	Hourly Credit \$	Hourly Credit \$	Hourly Credit \$	\$
	Hourly Credit \$	Hourly Credit \$	Hourly Credit \$	Hourly Credit \$	Hourly Credit \$	Hourly Credit \$	\$
	Hourly Credit \$	Hourly Credit \$	Hourly Credit \$	Hourly Credit \$	Hourly Credit \$	Hourly Credit \$	\$
	Hourly Credit \$	Hourly Credit \$	Hourly Credit \$	Hourly Credit \$	Hourly Credit \$	Hourly Credit \$	\$
	Hourly Credit \$	Hourly Credit \$	Hourly Credit \$	Hourly Credit \$	Hourly Credit \$	Hourly Credit \$	\$
	Hourly Credit \$	Hourly Credit \$	Hourly Credit \$	Hourly Credit \$	Hourly Credit \$	Hourly Credit \$	\$
	Hourly Credit \$	Hourly Credit \$	Hourly Credit \$	Hourly Credit \$	Hourly Credit \$	Hourly Credit \$	\$
	Hourly Credit \$	Hourly Credit \$	Hourly Credit \$	Hourly Credit \$	Hourly Credit \$	Hourly Credit \$	\$
	Hourly Credit \$	Hourly Credit \$	Hourly Credit \$	Hourly Credit \$	Hourly Credit \$	Hourly Credit \$	\$
	Hourly Credit \$	Hourly Credit \$	Hourly Credit \$	Hourly Credit \$	Hourly Credit \$	Hourly Credit \$	\$
	Hourly Credit \$	Hourly Credit \$	Hourly Credit \$	Hourly Credit \$	Hourly Credit \$	Hourly Credit \$	\$
	Hourly Credit \$	Hourly Credit \$	Hourly Credit \$	Hourly Credit \$	Hourly Credit \$	Hourly Credit \$	\$
<input checked="" type="checkbox"/> All workers on the project have been paid the full weekly wages earned, and no rebates or deductions have been or will be made either directly or indirectly, other than permissible deductions as defined in 29 CFR part 3.							
ADDITIONAL REMARKS							
SIGNATURE OF CERTIFYING OFFICIAL		DATE	TELEPHONE NUMBER	EMAIL ADDRESS			
Lorena Ochoa		07/10/2025	(713) 757 -- 7948 --	lorena@moranconstr.com			
THE WILLFUL FALSIFICATION OF ANY OF THE ABOVE STATEMENTS MAY SUBJECT THE CONTRACTOR OR SUBCONTRACTOR TO CIVIL OR CRIMINAL PROSECUTION (SEE SECTION 1001 OF TITLE 18 AND SECTION 3729 OF TITLE 31 OF THE UNITED STATES CODE), AS WELL AS DEBARMENT FROM FUTURE FEDERAL AND FEDERALLY-ASSISTED CONTRACTS. INFORMATION REPORTED IN CERTIFIED PAYROLLS MAY BE SUBJECT TO DISCLOSURE IN RESPONSE TO A FREEDOM OF INFORMATION ACT REQUEST.							

Memorial City Redevelopment Authority Status Update

As of July 17, 2025

W-140 Detention Basin Improvement Project (\$3,394,000 EPA grant)

- The first disbursement of \$3,458 accompanying pay application #1 has been paid to the MCRA.
- The second disbursement of \$2,394,000 accompanying pay application #2 has been paid to the MCRA.
- The third disbursement of \$55,178 accompanying pay application #3 has been paid to the MCRA.
- The fourth disbursement of \$287,976 accompanying pay application #4 has been paid to the MCRA.
- The fifth disbursement of \$625,776 accompanying pay application #5 has been submitted to the EPA for review and approval.

Memorial Drive Phase II (FY26 Earmark Submission)

- Representative Hunt did not include the TIRZ 17 portion of Memorial Drive in his project listing; he instead included a portion that was within the Villages and within Harris County Precinct 3.

Memorial Drive Phase II (\$3M HUD grant, \$2,334,147 MCRA share)

- The SOQ process closed on May 16, 2025.
- Eight responsive submissions were received.
- Submissions were reviewed by a committee of the City of Bunker Hill Village and the MCRA. A most qualified respondent was identified (HR Green).
- Scoping and a level of effort is being developed.
- The HUD grant has been executed.

MEMORIAL CITY REDEVELOPMENT AUTHORITY TIRZ No. 17,
HOUSTON, TEXAS

AGENDA MEMORANDUM

TO: Memorial City Redevelopment Authority TIRZ No. 17 Board of Directors

FROM: Executive Director

SUBJECT: Agenda Item Materials

5. Receive financial and bookkeeper's report, including approval of payment of invoices, review of investments, and project cash flow reports.

Memorial City Redevelopment Authority / TIRZ No. 17

Cash Management Report

June 30, 2025

ETI BOOKKEEPING SERVICES

17111 ROLLING CREEK DRIVE SUITE 108

HOUSTON TX 77090

TELEPHONE 281 444 3384 FAX 281 440 8304

Fiscal Year End: June 30, 2025

Summary

<u>Current Activity</u>	<u>General Operating Fund</u>	<u>Capital Projects Fund</u>	<u>Debt Service Fund</u>	<u>Total</u>
Beginning Balance	27,850,761.56	0.00	454,346.94	28,305,108.50
Revenue	937,329.88	0.00	1,599.75	938,929.63
Expenditures	3,699,701.50	0.00	0.00	3,699,701.50
Ending Balance	25,088,389.94	0.00	455,946.69	25,544,336.63

NOTES:

Debt Service Payments due in Fiscal Year End 2025:

Date	Series	Principal	Interest	Total
9/1/2024	2016R	3,125,000.00	122,910.00	3,247,910.00
9/1/2024	2019	2,970,000.00	569,875.00	3,539,875.00
3/1/2025	2016R		85,253.75	85,253.75
3/1/2025	2019		495,625.00	495,625.00
			Total FYE 2024	7,368,663.75

June 30, 2025

General Operating Fund

BEGINNING BALANCE: 27,850,761.56

REVENUE:

Checking Interest - Wells Fargo	1,131.93
Texpool Interest	91,665.80
Wells Fargo/TexSTAR (Surplus Funds) Interest	1,378.15
Grants	343,154.00
Voided Check(s) 3644	500,000.00

Total Revenue: 937,329.88

DISBURSEMENTS:

Checks Presented At Last Meeting	3,174,701.50
Checks Written at/after Last Meeting	0.00
New Mark Title Services	525,000.00
Bank Fees	0.00

Total Expenditures 3,699,701.50

Ending Balance: 25,088,389.94

Location of Assets:

Institution	Investment Number	Interest Rate	
Wells Fargo Checking	*5490	1.0800	854,066.82
TexPool	*0001	4.2970	23,841,525.80
Wells Fargo/TexSTAR	TexSTAR Surplus Funds	4.3338	392,797.32
		Total	25,088,389.94

Memorial City Redevelopment Authority
Checks Presented
July 22, 2025

Num	Name	Description	Amount
3655	Allen Boone Humphries Robinson LLP	Legal Fees	-14,168.75
3656	Deal Sikes	Bond Fee	-1,363.44
3657	Equi-Tax, Inc	Tax Assessor/ Collector	-400.00
3658	ETI Bookkeeping Services	Bookkeeping Fee	-1,159.28
3659	Hawes Hill & Associates	Professional Consultant	-10,000.00
3660	The Goodman Corporation Inc	Consultant Fee	-2,000.00
3661	Reytec Construction Resources, Inc.	Channel Improvements - Capital Projects	-379,406.25
3662	The Goodman Corporation Inc	Detention Basin - Capital Projects	-3,653.25
3663	Gauge Engineering, LLC	Engineering - Capital Projects	-59,153.03
Total			-471,304.00

Debt Service Fund

BEGINNING BALANCE **454,346.94**

REVENUE

TexPool DSF Interest	13.25
Wells Fargo/TexSTAR (2008 DSF) Interest	281.58
Wells Fargo/TexSTAR (2008 Pled Rev) Interest	1,304.92

Total Revenue **1,599.75**

EXPENDITURES

2008 Debt Service Interest Payment	0.00
2008 Debt Service Principal Payment	0.00
Trustee Fee	0.00

Total Expenditures **0.00**

ENDING BALANCE **455,946.69**

Location of Assets:

Institution	Investment Number	Interest Rate	Current Balance
Wells Fargo *4601	TexSTAR 2008 DSF	4.3338	80,255.51
Wells Fargo *4600	TexSTAR 2008 Pledged Rev	4.3338	371,932.45
TexPool	*0004	4.2970	3,758.73
		Total	455,946.69

**Memorial City Redevelopment Authority
Investment Report
June 30, 2025**

SCHEDULE OF INVESTMENTS

Investment Pools

Fund	Location Of Assets	Interest Rate	Beginning Balance			Interest Earned	Deposits or (Withdrawals)	Ending Balance		
			Market	N.A.V.	Book			Market	N.A.V.	Book
GOF	TexPool	4.2970	27,405,093.42	1.00012	27,401,860.00	91,665.80	(3,652,000.00)	23,844,339.10	1.00012	23,841,525.80
DSF	TexPool	4.2970	3,745.92	1.00012	3,745.48	13.25	0.00	3,759.17	1.00012	3,758.73
GOF	Wells Fargo/ TexStar	4.3338	391,465.51	1.000118	391,419.17	1,131.93	246.22	392,844.46	1.00012	392,797.32
DSF	Wells Fargo/ TexStar DSF	4.3338	79,983.40	1.000118	79,973.93	281.58	0.00	80,265.14	1.00012	80,255.51
DSF	Wells Fargo/ TexStar PI Rev	4.3338	370,671.41	1.000118	370,627.53	1,304.92	(0.00)	371,977.08	1.00012	371,932.45

Demand Accounts

Fund	Location Of Assets	Interest Rate	Purchase Date	Beginning Balance	Interest Earned	Deposits or (Withdrawals)	Ending Balance
GOF	Wells Fargo	1.08	6/8/2015	10,892.71	1,131.93	842,042.18	854,066.82

Collateral Pledged In Addition to FDIC

Depository Institution	Total Funds On Deposit	Custodial Institution	Securities Pledged	Collateral Description	Par Value	Market Value
Wells Fargo	854,066.82	BNYM	250,000	FDIC	250,000	250,000

Certification:

The Authority's investments are in compliance with the investment strategy as expressed in the Authority's Investment Policy and the Public Funds Investment Act. I hereby certify that pursuant to the Senate Bill 253 and in connection with the preparation of this investment report, I have reviewed the divestment lists prepared and maintained by the Texas Comptroller of Public Accounts, and the Authority does not own direct or indirect holdings in any companies identified on such lists.

Bookkeeper

Investment Officer

Investment Officer	Date Assumed Office	Training Completed
Jennifer Landreville	4/23/2024	10/25/2024

Memorial City Redevelopment Authority
Profit & Loss Budget vs. Actual
June 2025

			June			Year to Date (12 Months)			Annual
			Actual	Budget	Variance	Actual	Budget	Variance	Budget
Income									
1000 · Income									
	6001 · City Tax Revenue		1,537,574	1,599,500	-61,926	18,450,893	19,194,002	-743,109	19,194,002
	8223 · Interest Income		95,776	65,354	30,422	1,500,305	784,246	716,059	784,246
	8930 · Bond Proceeds		0	11,383,293	-11,383,293	0	136,599,520	-136,599,520	136,599,520
Total 1000 · Income			1,633,350	13,048,147	-11,414,797	19,951,198	156,577,768	-136,626,570	156,577,768
6-4350 · Grants			343,154	368,333	-25,179	2,740,612	4,420,000	-1,679,388	4,420,000
Total Income			1,976,504	13,416,480	-11,439,976	22,691,810	160,997,768	-138,305,958	160,997,768
Expense									
3335 · Management Consulting Services									
	6320 · Legal		14,169	4,167	10,002	52,964	50,000	2,964	50,000
	6322 · Eng Consultant/General Prof.Svc		2,450	5,000	-2,550	53,900	60,000	-6,100	60,000
	6334 · Planning Consultings		0	2,083	-2,083	0	25,000	-25,000	25,000
	6337 · Construction Audit		0	417	-417	0	5,000	-5,000	5,000
	6343 · Other		0	0	0	1,230	0	1,230	0
Total 3335 · Management Consulting Services			16,619	11,667	4,952	108,094	140,000	-31,906	140,000
5650 · Transfers									
	6420 · COH Administration Fee		0	0	0	959,700	959,700	0	959,700
	6430 · Municipal Services		0	0	0	2,129,093	2,256,619	-127,526	2,256,619
Total 5650 · Transfers			0	0	0	3,088,793	3,216,319	-127,526	3,216,319
	5707 · Principal		0	0	0	6,095,000	6,095,000	0	6,095,000
	5708 · Interest		0	0	0	1,273,664	1,273,664	0	1,273,664
Total 5706 · Debt Service			0	0	0	7,368,664	7,368,664	0	7,368,664
6-6300 · Maintenance & Operations									
	6321 · Auditor		0	0	0	19,000	21,500	-2,500	21,500
	6333 · Bookkeeping/Accounting		1,559	1,583	-24	19,822	19,000	822	19,000
	6340 · Administration Salaries/Benefit		10,000	10,000	0	145,000	120,000	25,000	120,000
	6344 · Bond Svcs/Trustee/FA		1,363	2,083	-720	13,113	25,000	-11,887	25,000
	6353 · Insurance		0	0	0	1,870	2,250	-380	2,250
	6359 · Bank Fees		0	0	0	523	0	523	0
Total 6300 · Administration & Overhead			12,922	13,666	-744	199,328	187,750	11,578	187,750
7000 · Capital Expenditure									
	1725 · Parks & Green Space Improv.		0	10,417	-10,417	0	125,000	-125,000	125,000
	1732A · N Gessner Drainage & Mobility		0	0	0	485,563	0	485,563	0
	1735(1) · Detention Basin A		0	833,710	-833,710	0	10,004,520	-10,004,520	10,004,520
	1737 · MetroNational - Detention/Roads		0	251,122	-251,122	3,013,459	3,013,460	-1	3,013,460
	1738A · Memorial Dr Drain & Mobility 1		0	41,362	-41,362	0	496,347	-496,347	496,347
	1738B · Memorial Dr Drain & Mobility 2		1,175	104,454	-103,279	38,600	1,253,450	-1,214,850	1,253,450
	1741 · W140 Detention Basin Extensions		440,588	645,912	-205,324	6,082,704	7,750,942	-1,668,238	7,750,942
	1742 · Detention Basin C		525,000	1,666,667	-1,141,667	641,460	20,000,000	-19,358,540	20,000,000

Memorial City Redevelopment Authority
Profit & Loss Budget vs. Actual
June 2025

				June			Year to Date (12 Months)			Annual
				Actual	Budget	Variance	Actual	Budget	Variance	Budget
			7999 · Miscellaneous Capital Expenses	0	5,000	-5,000	0	60,000	-60,000	60,000
			Total 7000 · Capital Expenditure	966,763	3,558,644	-2,591,881	10,261,786	42,703,719	-32,441,933	42,703,719
			Total Expense	996,304	3,583,977	-2,587,673	21,026,665	53,616,452	-32,589,787	53,616,452
			Net Income	980,200	9,832,503	-8,852,303	1,665,145	107,381,316	-105,716,171	107,381,316

3655

ALLEN BOONE HUMPHRIES ROBINSON LLP

To contact the ABHR Billing Department, please call 713-860-6400 or email at billing@abhr.com

July 10, 2025

MEMORIAL CITY REDEVELOPMENT AUTHORITY

General

Client/Matter: MEM001-01
Statement Number: 159202
Billing Attorney: Alia Vinson

REMITTANCE PAGE

Fees for services posted through July 04, 2025	13,891.25
Expenses and Other Items posted through July 04, 2025	277.50
Total Amount Due:	\$14,168.75

DUE UPON RECEIPT

Please return this page with your payment to the remittance address below:

**Allen Boone Humphries Robinson LLP
PO Box 4346
Department 90
Houston, TX 77210-4346**

*Checks should be made payable to Allen Boone Humphries Robinson LLP
Please include the invoice number on your check
Total amount payable in U.S. dollars*

3656

DEAL SIKES

Ms. Alia Vinson
ABHR
3200 Southwest Freeway, Suite 2600
Houston, TX 77027

Tax ID: 26-4118216

INVOICE

July 8, 2025

Project # 2025-2726-01

Ending Date 6/30/2025

Re: Memorial City Redevelopment Authority 2024 Certified Taxable Values

Current Charges

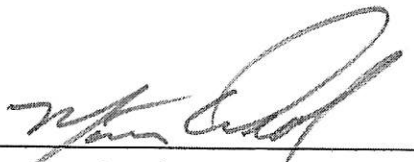
Name	Hours	Rate	Total
Matthew C. Deal, CRE	1.50	425.00	\$637.50
Jacquelyn Servaty	2.00	250.00	\$500.00
Sara DiGiovanni	1.00	100.00	\$100.00

	<u>Total</u>
Subtotal	\$1,237.50
Expenses	\$125.94
Total amount of this bill	\$1,363.44

BALANCE DUE \$1,363.44

Approved by: _____

Date: _____


7/8/25

8811 Gaylord Drive | Suite 150
Houston, Texas 77024
713.662.3500 | fax 888.662.2955
www.dealsikes.com

SB Code No. 6344
7-11-2025

3657

Equi-Tax Inc.

Invoice

Suite 200
17111 Rolling Creek Drive
Houston Texas 77090
281-444-4866

DATE	INVOICE #
7/1/2025	63711

BILL TO
TIRZ No. 17 - Memorial City RDA c/o ETI Bookkeeping Services Suite 108 17111 Rolling Creek Drive Houston TX 77090

DESCRIPTION	AMOUNT
Monthly Consultant Services fee per Contract Based on 444 items on the tax roll as of January 2025, at \$0.30 per item	400.00
Invoice emailed to: Jennifer Landreville at jl@equitaxinc.com Fred King at bkp2@etiaccounting.com Scott Bean at sbean@haweshill.com Linda Clayton at lclayton@haweshill.com	

Total	\$400.00
--------------	-----------------

SB

Code No. 6333
7-11-2025

PO BOX 73109
Houston, TX 77273

3658

Date	Invoice #
7/1/2025	10607

Bill To
TIRZ 17 Redevelopment Authority P.O. Box 73109 Houston, Texas 77273

Description	Qty	Rate	Amount
Bookkeeping		1,159.28	1,159.28

	Total	\$1,159.28
	Payments/Credits	\$0.00
	Balance Due	\$1,159.28

SB

Code No. 6333
7-11-2025

3659



PO BOX 22167
Houston, TX 77227-2167

INVOICE

BILL TO
Memorial City Redevelopment Authority/TIRZ #17

INVOICE 2483
DATE 07/01/2025

DESCRIPTION	AMOUNT
Professional Consulting and Administration Fee: June 2025	10,000.00
<hr/>	
BALANCE DUE	\$10,000.00

SB Code No. 6340
7-11-2025

3460

The Goodman Corporation
3200 Travis Street, Ste. 200
Houston, TX 77006

Invoice

Bill To
TIRZ 17 Memorial City Redevelopment Autho c/o Hawes Hill & Associates LLP P.O. Box 22167 Houston, TX 77227-2167

Date	Invoice #
6/30/2025	6-2025-60

Terms	Project
	MCT115

Item	Description	Rate	Prior %	Current %	Amount
Contract Services	Task 1 – Monitor and Present Funding Opportunities	48,000.00	37.52%	4.17%	2,000.00
Contract Services	Task 2 – Pursuit of Funding	105,500.00	14.22%	0.00%	0.00
	Pursuit of Funding Svcs				

Please send payment to:
The Goodman Corporation
911 W. Anderson Lane, Ste. 200
Austin, TX 78757

Total	\$2,000.00
Balance Due	\$2,000.00

Phone #	Fax #
713-951-7951	713-951-7957

Code No. 6322 SB
7-11-2025

3661



▶ 11750 Katy Freeway | Suite 400
Houston, TX 77079
Main 832.318.8800 + **Fax** 713.965.0044
TBPE Firm F-11278
▶ HRGREEN.COM

July 11, 2025

Ms. Ann Givens, Chair of the Board
Memorial City Redevelopment Authority/TIRZ 17
9610 Long Point, Suite 150
Houston, TX 77055

RE: Briar Branch (W140-01-00) Storm Water Detention Basin Expansion and Storm Sewer Improvements
WBS No. N-T17000-0021-3
Reytec Construction Resources, Inc. Payment No. 06

Dear Ms. Givens,

Reytec Construction Resources, Inc. (Reytec) has submitted estimate No. 06 in the amount of \$375,406.25 for construction services rendered through June 30, 2025. Based on our review, Reytec has complied with all requirements stated in the estimate and we recommend payment of **\$379,406.25** to Reytec.

The following billing information is to be used for payment:

Reytec Construction Resources, Inc.
1901 Hollister St.
Houston, TX 77080

If you have any questions or require additional information, please feel free to contact me at (832) 318-8800.

Sincerely,

HR GREEN, INC.

A handwritten signature in blue ink, appearing to be 'MA', written over a horizontal line.

Muhammad Ali, PE
Project Manager

Enclosures: Reytec Pay Est. No. 06

SB

Code No. 1741
7-11-2025

To: Memorial City Redevelopment Authority
Attn: Ann Givens, Board Chair
From: Kirk Myers, PE, PMP
Subject: W-140 Detention Basin Improvements Project
EPA Grant 02F25701 - 1
Construction Contract Pay Estimate #6
Date: July 10, 2025

This memo serves as notification of approval of Pay Estimate #6 for the subject Project. The pay application submitted by Reytec Construction Resources, Inc., reflects work completed during the period from 6/1/2025 to 6/30/2025. The Goodman Corporation (TGC) has reviewed the pay application, certified payrolls, and supporting documents and has determined all items are in compliance with the plans, specifications, and contract conditions. TGC hereby recommends payment of \$379,406.25 to Reytec Construction pursuant to the executed contract.

The following billing information is to be used for payment:

Reytec Construction Resources, Inc.
1901 Hollister St
Houston, TX 77080

The Authority may draw down 80% of the allocated costs (detention basin and roadway), or \$27,200.00, from the EPA funding allocated to this project in accordance with the grant agreement. The Authority share is \$352,206.25. The total allocations of Federal and Authority shares and summary of work completed this period are provided on the following page. TGC requests copies of the approved pay certificate and proof of payment for the grant reimbursement request.

Please feel free to contact me with any questions or requests for additional information at (713) 714-3560 or kmyers@thegoodmancorp.com.

Encl:
Certified Pay Estimate Packet
DBE Contractor Payment Report

C:
Gauge Engineering, Attn: David Greaney, PE, Project Manager
Hawes-Hill & Associates, Records & Compliance, Attn: Linda Clayton

Pay Estimate (Period)	Payment Due Contractor	Federal Share (EPA Grant 02F25701-1)	Authority Share
#1 (1/1/25-1/31/25)	\$390,503.20	\$3,458.00	\$387,045.20
#2 (2/1/25-2/28/25)	\$3,450,290.75	\$2,394,000.00	\$1,056,290.75
#3 (3/1/25-3/30/25)	\$149,068.68	\$55,178.00	\$93,890.68
#4 (4/1/25-4/30/25)	\$433,357.32	\$287,976.00	\$145,381.32
#5 (5/1/25-5/31/25)	\$910,774.50	\$625,776.00	\$284,998.50
#6 (6/1/25-6/30/25)	\$379,406.25	\$27,200.00	\$352,206.25
Running Totals	\$5,713,400.70	\$3,393,588.00	\$2,319,812.70

The amount of the EPA grant for this project is \$3,394,000.00. The grant balance, including this payment, is \$412.00. The share amounts above reflect the appropriate eligible work items as detailed in the project budget in the grant agreement. The Automated Standard Application for Payments (ASAP) request will be submitted upon receipt of the Authority's proof of payment.

The work completed during this period corresponds to approximately 2.9% of the bid schedule, bringing the project earned value to 43.6%. Elapsed contract time is 168 of 470 calendar days (35.7%). There have been no approved changes to the contract. The summary of completed work for the stated period is provided in the following table.

Item Category	Item Description	% Complete this Period	Total % Completed
Traffic Control	Traffic Control and Regulation	7.46%	44.73%
Detention Basin	24" Aluminized Steel Type 2 CMP	0.67%	83.10%
	5" Concrete Pilot Channel Care and Control of Water		
Pump Station	4'x4' Precast RCB	10.88%	18.02%
	Structural Wet Well Trench Safety		
Extra Unit Price	Temporary Basin Pumping	4.88%	29.27%

Estimate No. 5
Cut off Date 06/30/25
Estimate Date 07/05/25

Memorial City Redevelopment Authority / TIRZ 17
Estimate and Certificate for Payment Unit Price Work



Project Name : W140-01-00 Briar Branch Storm Water Detention Basin Expansion and Storm Sewer Improvements
Contractor Name : Reytec Construction Resources, Inc.
Address : 1901 Hollister St. Houston, TX 77080

WBS No. N-T17000-0021-3

Contract Date : 10/15/2024
Start Date : 1/6/2025
Current Contract Completion Date : 4/20/2026
Substantial Completion Date :
Percentage By Time : 37.23% In Place : 43.59%
Date Insurance Exp. : 9/30/2025 Drug Policy Due Date: N/A

M/SBE : 21.43%
Current M/SBE : 0.00%
WBE : 6.78%
Current WBE : 0.00%

CONTRACT TIME IN CALENDAR DAYS

Original Contract Time : 470
Approved Extensions : 0
Total Contract Time : 470
Days Used to Date : 175
Days Remaining to Date : 295
Schedule Update Received :

CONTRACT AMOUNT TO DATE :

- 1- Original Contract Amount
2- Approved Change Orders

\$13,797,688.00

No.	Date	Ext.Days	Amount

Total Approved Extensions

0

Total Change Orders to Date

\$0.00

- 3- Approved Work Change Directives

No.	Date	Ext.Days	Amount

Total Pending Work Change Directives to Date

\$0.00

TOTAL CONTRACT AMOUNT (excludes WCDs)

\$13,797,688.00

A. EARNINGS TO DATE

- 1- Work Completed to Date 43.59% Complete
2- Material Stored on Site \$0.00
3- Material Stored in Place \$0.00
4- Balance-Materials Accepted Not in Place \$0.00 @ 85%
5- Work Change Directives - In Place \$0.00

Current Month Billing \$399,375.00
\$6,014,106.00

TOTAL EARNINGS TO DATE \$6,014,106.00

B. DEDUCTIONS

- 1- Retainage 5% Of \$6,014,106.00 \$300,705.30
2- Retainage Release 0% Of \$6,014,106.00 \$0.00
3- Total Retainage \$300,705.30
4- Liquidated Damages 0.00 Days @ \$2,000.00 \$0.00
5- Assessments \$0.00
6- Inspector Overtime Costs \$0.00

TOTAL DEDUCTIONS \$300,705.30

C. AMOUNT DUE THIS PERIOD

- 1- Total Earnings to Date \$6,014,106.00
2- Total Deductions \$300,705.30
3- Total Payments Due \$5,713,400.70
4- Less Previous Payments \$5,333,994.45
5- Restoration Adjustment \$0.00

TOTAL AMOUNT DUE CONTRACTOR THIS DATE \$379,406.25

BALANCE REMAINING \$7,783,582.00

Prepared By David G. Greaney 7/11/2025
Date

Reviewed By Muhammad Ali, P.E. 7/11/2025
Date

Approved By: TIRZ 17
Date

MEMORIAL CITY REDEVELOPMENT AUTHORITY/ITR217
W140-01-00 BRIAR BRANCH STORM WATER DETENTION BASIN EXPANSION
AND STORM SEWER IMPROVEMENTS WBS NO. N-T17000-0021-3

Contractor:
Reytec Construction Resources, Inc
1901 Hollister St.
Houston, Texas 77080

Todays Date: 7/3/2025
Pay Period: 06/01/2025 - 06/30/2025
Pay Estimate No. 6
Rain Days This Month

Item	Item Description	UOM	Est. Unit Quantity	Unit Price	Contract Amount	Previous Quantities	This Month Quantities	To Date Quantities	This Month Billing	Total Amount Billed	% Complete	Explanation
General Items												
1	MOBILIZATION	LS	1	\$ 750,000.00	\$ 750,000.00	1.00		1.00	\$ -	\$ 750,000.00	100%	
2	CLEARING AND GRUBBING	AC	6	\$ 2,500.00	\$ 15,000.00	6.00		6.00	\$ -	\$ 15,000.00	100%	
3	UNIFORMED PEACE OFFICERS (MID BID \$55-HR)	HR	1000	\$ 55.00	\$ 55,000.00	19.00		19.00	\$ -	\$ 1,045.00	2%	
4	12" PIPE GATE	EA	2	\$ 5,000.00	\$ 10,000.00	0.00		0.00	\$ -	\$ -	0%	
Demolition Items												
5	REMOVE EXIST ASPHALT PAVEMENT BY MILLING	SY	1986	\$ 5.00	\$ 9,930.00	0.00		0.00	\$ -	\$ -	0%	
6	REMOVE AND DISPOSE OF REINFORCED CONC PAV W/ W/O ASPHALT	SY	3785	\$ 12.00	\$ 45,420.00	0.00		0.00	\$ -	\$ -	0%	
7	REMOVE AND DISPOSE OF EXIST CONC CURB	LF	2200	\$ 1.50	\$ 3,300.00	0.00		0.00	\$ -	\$ -	0%	
8	REMOVE AND DISPOSE OF CONC DRIVEWAYS	SY	424	\$ 12.00	\$ 5,088.00	0.00		0.00	\$ -	\$ -	0%	
9	REMOVE AND DISPOSE OF CONC SIDEWALKS & RAMPS	SY	61	\$ 15.00	\$ 915.00	0.00		0.00	\$ -	\$ -	0%	
10	REMOVE AND DISPOSE OF EXIST STM SWR PIPE	LF	670	\$ 20.00	\$ 13,400.00	80.00		80.00	\$ -	\$ 1,600.00	12%	
11	REMOVE AND DISPOSE OF EXIST MANHOLES	EA	7	\$ 850.00	\$ 5,950.00	1.00		1.00	\$ -	\$ 850.00	14%	
12	REMOVE AND DISPOSE OF EXIST INLETS	EA	6	\$ 850.00	\$ 5,100.00	0.00		0.00	\$ -	\$ -	0%	
13	CUT AND PLUG PIPES	EA	3	\$ 2,000.00	\$ 6,000.00	0.00		0.00	\$ -	\$ -	0%	
Traffic Control Items												
14	TRAFFIC CONTROL AND REGULATION	LS	1	\$ 112,500.00	\$ 112,500.00	0.50	0.10	0.60	\$ 11,250.00	\$ 67,500.00	60%	
15	FURNISH AND INSTALLING PRECAST LPCB TYP 1&2	LF	560	\$ 30.00	\$ 16,800.00	0.00		0.00	\$ -	\$ -	0%	
16	MOVE PRECAST LPCB TYP 1&2	LF	880	\$ 15.00	\$ 13,200.00	0.00		0.00	\$ -	\$ -	0%	
17	REMOVE PRECAST LPCB TYP 1&2	LF	560	\$ 15.00	\$ 8,400.00	0.00		0.00	\$ -	\$ -	0%	
Roadway Items												
18	HYDRATED LIME (SLURRY) OR COMMERCIAL LIME SLURRY	TON	87	\$ 365.00	\$ 35,405.00	0.00		0.00	\$ -	\$ -	0%	
19	8" LIME TREATED STABILIZED SUBGRADE	SY	4388	\$ 8.50	\$ 37,298.00	0.00		0.00	\$ -	\$ -	0%	
20	REINFORCED CONCRETE PAVEMENT (6" DEPTH)	SY	1534	\$ 80.00	\$ 122,720.00	0.00		0.00	\$ -	\$ -	0%	
21	REINFORCED CONCRETE PAVEMENT (6" DEPTH) HES	SY	1041	\$ 100.00	\$ 104,100.00	0.00		0.00	\$ -	\$ -	0%	
22	REINFORCED CONCRETE PAVEMENT (11" DEPTH)	SY	534	\$ 115.00	\$ 61,410.00	0.00		0.00	\$ -	\$ -	0%	
23	REINFORCED CONCRETE PAVEMENT (11" DEPTH) HES	SY	870	\$ 130.00	\$ 113,100.00	0.00		0.00	\$ -	\$ -	0%	
24	TYPE D HOT MIX ASPHALTIC CONC PAV. (1-1/2") INCL. TACKCOAT	TON	362	\$ 250.00	\$ 90,500.00	0.00		0.00	\$ -	\$ -	0%	
25	REINFORCED CONCRETE SIDEWALK (4-1/2" THICK)	SF	152	\$ 25.00	\$ 3,800.00	0.00		0.00	\$ -	\$ -	0%	
26	CONSTRUCT ADA COMPLAINT RAMP	SF	605	\$ 30.00	\$ 18,150.00	0.00		0.00	\$ -	\$ -	0%	
27	6-INCHES CONC DRIVEWAY INCL. EXCAVATION AND BASE	SF	3287	\$ 12.00	\$ 39,444.00	0.00		0.00	\$ -	\$ -	0%	
28	7-INCH HES CONC DRIVEWAY INCL. EXCAVATION AND BASE	SF	300	\$ 20.00	\$ 6,000.00	0.00		0.00	\$ -	\$ -	0%	
29	REINFORCED CONCRETE CURB (6")	LF	1810	\$ 5.00	\$ 9,050.00	0.00		0.00	\$ -	\$ -	0%	
30	CONCRETE PAVING HEADER	LF	195	\$ 15.00	\$ 2,925.00	0.00		0.00	\$ -	\$ -	0%	
Pavement Marking Items												
31	THERMOPLASTIC PAVEMENT MARKINGS - (W) (12") (SLD)	LF	132	\$ 5.00	\$ 660.00	0.00		0.00	\$ -	\$ -	0%	
32	THERMOPLASTIC PAVEMENT MARKINGS - (W) (24") (SLD)	LF	65	\$ 10.00	\$ 650.00	0.00		0.00	\$ -	\$ -	0%	
33	RASIED PAVEMENT MARKERS TYPE II (A-A)	EA	34	\$ 10.00	\$ 340.00	0.00		0.00	\$ -	\$ -	0%	
34	THERMOPLASTIC PAVEMENT MARKINGS - (Y)(4") (SLD)	LF	1274	\$ 2.50	\$ 3,185.00	0.00		0.00	\$ -	\$ -	0%	
Drainage Items												
35	BRICK PLUG IN RCB	SF	240	\$ 50.00	\$ 12,000.00	0.00		0.00	\$ -	\$ -	0%	
36	TYP C-1 INLET W/ ONE EXTENSION	EA	13	\$ 6,500.00	\$ 84,500.00	0.00		0.00	\$ -	\$ -	0%	
37	TXDOT TYP C-1 INLET W/ ONE EXTENSION	EA	5	\$ 7,500.00	\$ 37,500.00	0.00		0.00	\$ -	\$ -	0%	
38	TYP C 4-FOOT DIA PRECAST ROUND CONC MANHOLE	EA	3	\$ 9,000.00	\$ 27,000.00	0.00		0.00	\$ -	\$ -	0%	
39	TYP C 4-FOOT DIA PRECAST MANHOLE ON RCB	EA	10	\$ 3,000.00	\$ 30,000.00	0.00		0.00	\$ -	\$ -	0%	
40	DESIGN, FURNISH, AND INSTALL 9x9" JUNCTION BOX	EA	3	\$ 30,000.00	\$ 90,000.00	0.00		0.00	\$ -	\$ -	0%	
41	DESIGN, FURNISH, AND INSTALL 9x9" JUNCTION BOX W/ 4x3" RESTRICTOR	EA	1	\$ 30,000.00	\$ 30,000.00	0.00		0.00	\$ -	\$ -	0%	
42	3-INCH PVC PIPE TO CURB	LF	20	\$ 20.00	\$ 400.00	0.00		0.00	\$ -	\$ -	0%	
43	4-INCH PVC PIPE TO CURB	LF	20	\$ 25.00	\$ 500.00	0.00		0.00	\$ -	\$ -	0%	
44	24-INCH DIA STM SWR BY OPEN CUT	LF	151	\$ 200.00	\$ 30,200.00	0.00		0.00	\$ -	\$ -	0%	
45	30-INCH DIA STM SWR BY OPEN CUT	LF	14	\$ 300.00	\$ 4,200.00	0.00		0.00	\$ -	\$ -	0%	
46	7x7" RCB BY OPEN CUT	LF	2248	\$ 900.00	\$ 2,023,200.00	0.00		0.00	\$ -	\$ -	0%	
47	7x6" RCB BY OPEN CUT	LF	40	\$ 1,300.00	\$ 52,000.00	0.00		0.00	\$ -	\$ -	0%	
48	7x4" RCB BY OPEN CUT	LF	110	\$ 1,250.00	\$ 137,500.00	0.00		0.00	\$ -	\$ -	0%	
49	TRENCH SAFETY SYSTEM	LF	2563	\$ 5.00	\$ 12,815.00	0.00		0.00	\$ -	\$ -	0%	
SWPPP Items												
50	INLET PROTECTION BARRIER	LF	78	\$ 25.00	\$ 1,950.00	78.00		78.00	\$ -	\$ 1,950.00	100%	
51	BAGGED GRAVEL BARRIER	LF	369	\$ 25.00	\$ 9,225.00	0.00		0.00	\$ -	\$ -	0%	
52	REINFORCED SILT FENCE	LF	2059	\$ 2.00	\$ 4,118.00	2059.00		2059.00	\$ -	\$ 4,118.00	100%	
53	ROCK FILTER DAME - TYPE 2	LF	109	\$ 50.00	\$ 5,450.00	40.00		40.00	\$ -	\$ 2,000.00	37%	
54	STABILIZED CONSTRUCTION ACCESS	SY	110	\$ 35.00	\$ 3,850.00	66.00		66.00	\$ -	\$ 2,310.00	60%	
Water Line Items												
55	HAND DIG FOR WATER LINE INSTALLATION	LS	1	\$ 5,000.00	\$ 5,000.00	1.00		1.00	\$ -	\$ 5,000.00	100%	
56	OFFSET OF EXIST 1-1/2" TO 2" DIA SERVICE LINE, LONG SIDE	EA	20	\$ 4,000.00	\$ 80,000.00	0.00		0.00	\$ -	\$ -	0%	
57	REMOVE OF EXIST WATER LINE (ALL SIZES)	LF	460	\$ 12.00	\$ 5,520.00	0.00		0.00	\$ -	\$ -	0%	
58	TRENCH SAFETY SYSTEM	LF	395	\$ 10.00	\$ 3,950.00	263.00		263.00	\$ -	\$ 2,630.00	67%	
59	WTR MAIN PIPE (PVC) 8-INCH, BY OPEN CUT	LF	207	\$ 250.00	\$ 51,750.00	167.00		167.00	\$ -	\$ 41,750.00	81%	
60	WTR MAIN PIPE (PVC) 12-INCH, BY OPEN CUT	LF	188	\$ 350.00	\$ 65,800.00	98.00		98.00	\$ -	\$ 33,600.00	51%	
61	FIRE HYDRANT BRANCH	LF	5	\$ 250.00	\$ 1,250.00	1.00		1.00	\$ -	\$ 250.00	20%	
62	FIRE HYDRANT ASSEMBLY	EA	1	\$ 15,000.00	\$ 15,000.00	1.00		1.00	\$ -	\$ 15,000.00	100%	
63	REMOVING AND SALVAGING FIRE HYDRANT	EA	1	\$ 550.00	\$ 550.00	1.00		1.00	\$ -	\$ 550.00	100%	
64	CUT, PLUG, & ABANDON (6 IN)	EA	7	\$ 1,250.00	\$ 8,750.00	1.00		1.00	\$ -	\$ 1,250.00	14%	
65	CUT, PLUG, & ABANDON (8 IN)	EA	2	\$ 1,350.00	\$ 2,700.00	0.00		0.00	\$ -	\$ -	0%	
66	WET CONNECTION (8 IN)	EA	12	\$ 1,500.00	\$ 18,000.00	7.00		7.00	\$ -	\$ 10,500.00	58%	
67	WET CONNECTION (12 IN)	EA	7	\$ 2,000.00	\$ 14,000.00	2.00		2.00	\$ -	\$ 4,000.00	29%	
Sanitary Sewer Items												
68	ADJUST EXIST SAN SWR MANHOLES TO GRADE	EA	1	\$ 1,000.00	\$ 1,000.00	0.00		0.00	\$ -	\$ -	0%	
69	CASING (STEEL) (SAN SWR) (15 IN)	LF	40	\$ 250.00	\$ 10,000.00	0.00		0.00	\$ -	\$ -	0%	
70	10-INCH SAN SWR BY OPEN CUT	LF	19	\$ 500.00	\$ 9,500.00	0.00		0.00	\$ -	\$ -	0%	
Illumination Items												
71	GROUND BOX TYP D (162922)	EA	2	\$ 1,500.00	\$ 3,000.00	0.00		0.00	\$ -	\$ -	0%	
72	STREET LIGHTING CONDUIT, 2-INCH, SCH 80 PVC	LF	162	\$ 30.00	\$ 4,860.00	0.00		0.00	\$ -	\$ -	0%	

TOTAL \$ 5,333,994.45

Project Manager

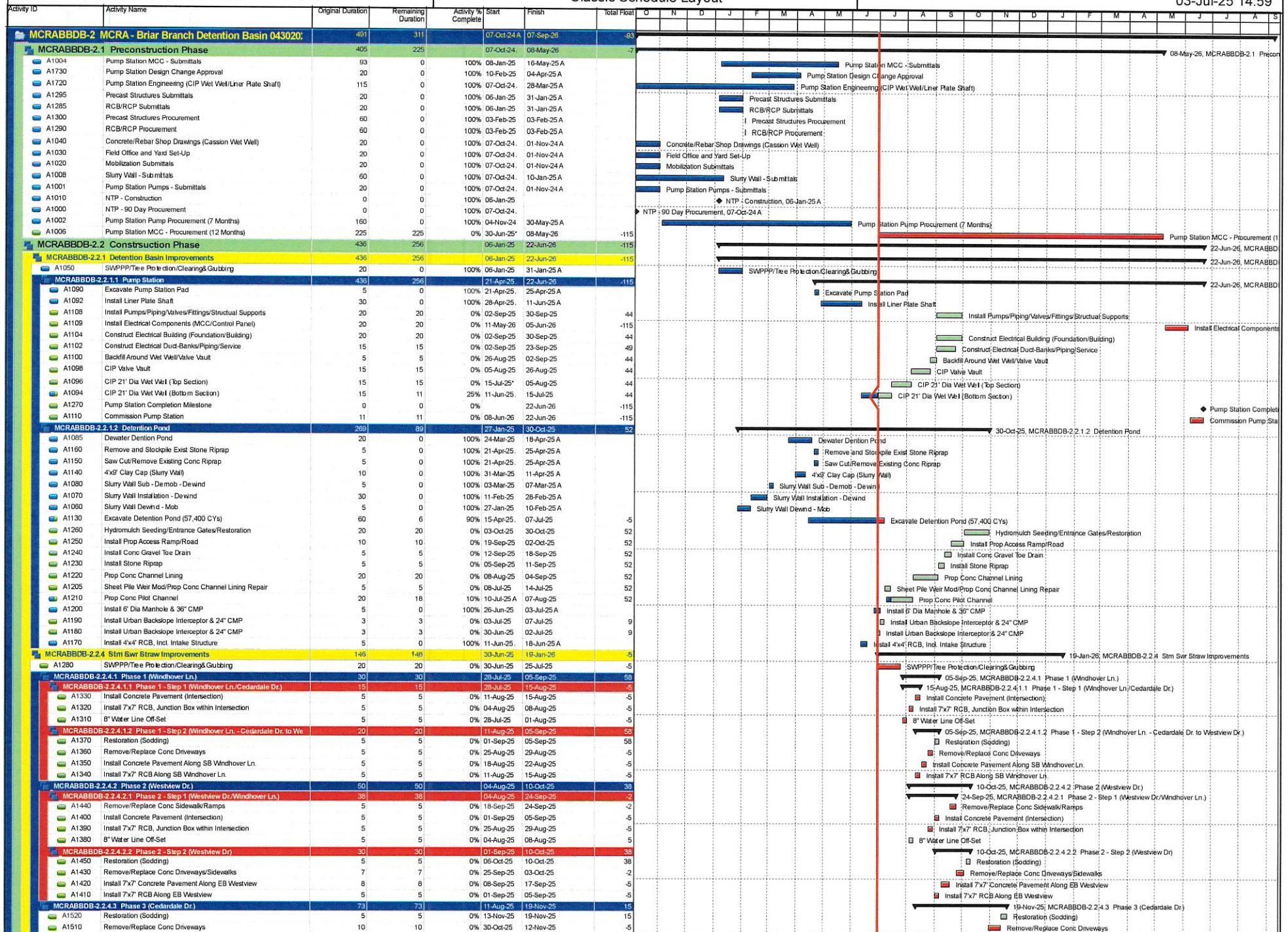
Due This Month After Retainage

Date _____

Detention Basin Items												
73	PIEZOMETER	EA	1	\$	7,500.00	\$	7,500.00	1.00	1.00	\$	-	100%
74	TYP "C" 6-FOOT DIA PRECAST ROUND CONC MANHOLE	EA	1	\$	30,000.00	\$	30,000.00	1.00	1.00	\$	7,500.00	100%
75	REMOVE AND DISPOSE OF SHEET PILE WEIR	SF	315	\$	10.00	\$	3,150.00	0.00	0%	\$	-	0%
76	REMOVE AND DISPOSE OF CHANNEL LINING	SY	1532	\$	10.00	\$	15,320.00	1469.00	1469.00	\$	14,590.00	95%
77	REMOVE AND DISPOSE OF EXIST CONC AND CURB/GUTTER	LF	60	\$	5.00	\$	300.00	0.00	0.00	\$	-	0%
78	REMOVE AND DISPOSE OF EXIST BACKSLOPE INTERCEPTOR STRUCTURE	EA	2	\$	300.00	\$	600.00	2.00	2.00	\$	600.00	100%
79	REMOVE AND DISPOSE OF WATER VALVE	EA	3	\$	350.00	\$	1,050.00	3.00	3.00	\$	1,050.00	100%
80	REMOVE AND DISPOSE OF WATER METER	EA	5	\$	350.00	\$	1,750.00	5.00	5.00	\$	1,750.00	100%
81	REMOVE AND DISPOSE OF SPRINKLER	EA	6	\$	250.00	\$	1,500.00	5.00	5.00	\$	1,250.00	100%
82	REMOVE AND DISPOSE OF METAL POST WITH POST/CV BOX	EA	2	\$	250.00	\$	500.00	2.00	2.00	\$	600.00	100%
83	REMOVE STOCKPILE AND RE-INSTALL STONE RIPRAP	SY	740	\$	70.00	\$	51,800.00	370.00	370.00	\$	26,900.00	50%
84	COARSE FILTER TOE DRAIN (CONC GRAVEL)	LF	1272	\$	35.00	\$	44,520.00	0.00	0.00	\$	-	0%
85	TOE DRAIN WASHOUT STRUCTURE (PVC)	EA	1	\$	1,500.00	\$	1,500.00	0.00	0.00	\$	-	0%
86	CRUSHED LIMESTONE - 6" DEPTH (ALL WEATHER ACCESS ROAD)	SY	4104	\$	20.00	\$	82,080.00	0.00	0.00	\$	-	0%
87	GRANULAR FILL 3"x5" (8-INCH DEPTH) (150 LB/CF) INCL GEOGRID	TON	2044	\$	80.00	\$	163,520.00	0.00	0.00	\$	-	0%
88	24" ALUMINIZED STEEL TYPE 2 CMP BY OPEN CUT	LF	249	\$	120.00	\$	29,880.00	0.00	0.00	\$	-	0%
89	36" ALUMINIZED STEEL TYPE 2 CMP BY OPEN CUT	LF	124	\$	150.00	\$	18,600.00	137.00	137.00	\$	16,440.00	89%
90	URBAN INTERCEPTOR STRUCTURE	EA	2	\$	5,000.00	\$	10,000.00	124.00	124.00	\$	16,440.00	100%
91	CARE AND CONTROL OF WATER	LS	2	\$	60,000.00	\$	60,000.00	0.85	0.1	\$	6,000.00	98%
92	EXCAVATION AND OFFSITE DISPOSAL	CY	57400	\$	20.00	\$	1,148,000.00	51660	51660.00	\$	1,033,200.00	90%
93	EXCAVATION, STOCKPILE AND RE-USE SOIL	CY	200	\$	30.00	\$	6,000.00	100	100.00	\$	3,000.00	50%
94	IMPORTED CLAY CAP OVER SLURRY WALL	CY	2227	\$	50.00	\$	111,350.00	1810.36	1810.36	\$	90,618.00	81%
95	CONCRETE CHANNEL LINING 5' PILOT CHANNEL	SY	1093	\$	150.00	\$	163,950.00	0	59	\$	13,330.00	8%
96	CONCRETE CHANNEL LINING 6" (WEIR)	SY	2385	\$	60.00	\$	143,100.00	0	0.00	\$	-	0%
97	CONCRETE CHANNEL LINING REPAIR 6" (WEIR)	SY	270	\$	200.00	\$	54,000.00	0	0.00	\$	-	0%
98	RIPRAP (GRADE NO 1) (18")	SY	164	\$	120.00	\$	19,680.00	0	0.00	\$	-	0%
99	SUBSURFACE BARRIER WALL (FURNISH AND INSTALL)	SF	157500	\$	20.00	\$	3,150,000.00	157500	157500.00	\$	3,150,000.00	100%
100	6" PVC (SDR26)	LF	120	\$	50.00	\$	6,000.00	0	0.00	\$	-	0%
Pump Station Items												
101	GROUND WATER CONTROL FOR OPEN CUT CONSTRUCTION	LS	1	\$	5,000.00	\$	5,000.00	0	0.00	\$	-	0%
102	TRENCH SAFETY SYSTEMS FOR TRENCH EXCAVATION	LF	450	\$	5.00	\$	2,250.00	124	287	\$	1,338.00	87%
103	4"x4" PRECAST REINFORCED CONCRETE BOX SEWERS	LF	130	\$	50.00	\$	6,500.00	0	130	\$	65,000.00	100%
104	(PAINTING) PAINTING FOR PIPING VALVES	LS	1	\$	20,000.00	\$	20,000.00	0	0.00	\$	-	0%
105	VERTICAL SINGLE STAGE NON-CLOG CENTRIFUGAL PUMPS	LS	1	\$	450,000.00	\$	450,000.00	0	0.00	\$	-	0%
106	AIR RELEASE VALVE FOR PUMPING SYSTEM FORCE MAIN PIPING	EA	4	\$	15,000.00	\$	60,000.00	0	0.00	\$	-	0%
107	PUMP STATION PIPING - 12-INCH RISER PIPING INCL VALVES	LS	1	\$	165,000.00	\$	165,000.00	0	0.00	\$	-	0%
108	PIPE STATION PIPING - 18-INCH RISER PIPING INCL VALVES	LS	1	\$	85,000.00	\$	85,000.00	0	0.00	\$	-	0%
109	STRUCTURAL - WET WELL	LS	1	\$	50,000.00	\$	50,000.00	1	1.00	\$	50,000.00	100%
109.1	STRUCTURAL - WET WELL (ENGINEERING)	LS	1	\$	50,000.00	\$	50,000.00	0.6	0.4	\$	20,000.00	100%
109.2	STRUCTURAL - WET WELL EXCAVATION PUMP STATION PAD	LS	1	\$	50,000.00	\$	50,000.00	0.60	0.4	\$	20,000.00	100%
109.3	STRUCTURAL - WET WELL (DEBRIS PLATE SHAFT)	LS	1	\$	250,000.00	\$	250,000.00	0	0.0	\$	100,000.00	100%
109.4	STRUCTURAL - WET WELL (CIP WET WELL CONC PLUG)	LS	1	\$	100,000.00	\$	100,000.00	0	0.0	\$	50,000.00	100%
109.5	STRUCTURAL - WET WELL (CIP WET WELL BOTTOM SECTION)	LS	1	\$	300,000.00	\$	300,000.00	0	0.25	\$	75,000.00	25%
109.6	STRUCTURAL - WET WELL (CIP WET WELL TOP SECTION)	LS	1	\$	300,000.00	\$	300,000.00	0	0.00	\$	-	0%
109.7	STRUCTURAL - WET WELL (CIP WET WELL TOP)	LS	1	\$	75,000.00	\$	75,000.00	0	0.00	\$	-	0%
109.8	STRUCTURAL - WET WELL (CIP WET WELL INTERNAL SUPPORT COLUMNS)	LS	1	\$	50,000.00	\$	50,000.00	0	0.00	\$	-	0%
109.9	STRUCTURAL - WET WELL (DEBRIS SCREEN/METAL COMPONENTS)	LS	1	\$	100,000.00	\$	100,000.00	0	0.00	\$	-	0%
109.10	STRUCTURAL - WET WELL (BACKFILL STRUCTURE)	LS	1	\$	25,000.00	\$	25,000.00	0	0.00	\$	-	0%
110	STRUCTURAL - VALVE VAULT	LS	1	\$	100,000.00	\$	100,000.00	0	0.00	\$	-	0%
110.1	STRUCTURAL - VALVE VAULT (CIP CONC BOTTOM)	LS	1	\$	100,000.00	\$	100,000.00	0	0.00	\$	-	0%
110.2	STRUCTURAL - VALVE VAULT (CIP CONC WALLS)	LS	1	\$	100,000.00	\$	100,000.00	0	0.00	\$	-	0%
110.3	STRUCTURAL - VALVE VAULT (INSTALL SCREEN/PLATFORM)	LS	1	\$	50,000.00	\$	50,000.00	0	0.00	\$	-	0%
111	STRUCTURAL - INTAKE STRUCTURE	LS	1	\$	35,000.00	\$	35,000.00	0	0.00	\$	-	0%
112	STRUCTURAL - RETAINING WALL MODIFICATIONS	LS	1	\$	30,000.00	\$	30,000.00	0	0.00	\$	-	0%
113	STRUCTURAL - CMU CONTROL BUILDING W/ PRECAST ROOF	LS	1	\$	33,000.00	\$	33,000.00	0	0.00	\$	-	0%
113.1	STRUCTURAL - CMU CONTROL BUILDING (CIP FOUNDATION/STAIRS)	LS	1	\$	33,000.00	\$	33,000.00	0	0.00	\$	-	0%
113.2	STRUCTURAL - CMU CONTROL BUILDING (BRICK WALLS)	LS	1	\$	27,500.00	\$	27,500.00	0	0.00	\$	-	0%
113.3	STRUCTURAL - CMU CONTROL BUILDING (ROOF)	LS	1	\$	27,500.00	\$	27,500.00	0	0.00	\$	-	0%
113.4	STRUCTURAL - CMU CONTROL BUILDING (INTERIOR FINISHES)	EA	1	\$	22,000.00	\$	22,000.00	0	0.00	\$	-	0%
114	ELECTRICAL - CONTROL PANEL AND PANEL INSTRUMENTATION	EA	1	\$	10,000.00	\$	10,000.00	0	0.00	\$	-	0%
115	ELECTRICAL - LIGHTING CONTRACTOR	EA	1	\$	3,000.00	\$	3,000.00	0	0.00	\$	-	0%
116	ELECTRICAL - LIGHTING/DISTRIBUTION PANEL	EA	1	\$	20,000.00	\$	20,000.00	0	0.00	\$	-	0%
117	ELECTRICAL - AUTODIALER OR MOTOROLA ACE3600	EA	1	\$	10,000.00	\$	10,000.00	0	0.00	\$	-	0%
118	ELECTRICAL - MISCELLANEOUS ELECTRICAL INSTRUMENTATION	EA	1	\$	250,000.00	\$	250,000.00	0	0.00	\$	-	0%
119	ELECTRICAL - OTHER LIGHTING INCL ELECTRICAL BUILDING	EA	1	\$	20,000.00	\$	20,000.00	0	0.00	\$	-	0%
120	ELECTRICAL - LEVEL INDICATING TRANSMITTER FOR CONTROL PANEL	EA	2	\$	5,000.00	\$	10,000.00	0	0.00	\$	-	0%
121	ELECTRICAL - CONDUIT AND CABLE	EA	1	\$	20,000.00	\$	20,000.00	0	0.00	\$	-	0%
122	ELECTRICAL - NEW ELECTRICAL SERVICE	EA	1	\$	160,000.00	\$	160,000.00	0	0.00	\$	-	0%
123	ELECTRICAL - MOTOR CONTROL CENTER W/ MTS	EA	1	\$	100,000.00	\$	100,000.00	0	0.00	\$	-	0%
124	ELECTRICAL - 10KVA 1-PHASE TRANSFORMER	EA	1	\$	7,500.00	\$	7,500.00	0	0.00	\$	-	0%
125	ELECTRICAL - 15KVA 1-PHASE TRANSFORMER	EA	1	\$	20,000.00	\$	20,000.00	0	0.00	\$	-	0%
126	ELECTRICAL - FIELD INSTRUMENTATION (2 x HYDRANGER UNITS)	EA	2	\$	10,000.00	\$	20,000.00	0	0.00	\$	-	0%
Tree Protection Items												
127	Install Root Pruning Trench	LF	275	\$	10.00	\$	2,750.00	0	0.00	\$	-	0%
128	Install Zero Curb Cutback	LF	810	\$	15.00	\$	12,150.00	0	0.00	\$	-	0%
Landscaping Items												
129	BERMUDA SOD (INCL TOPSOIL)	SY	2432	\$	5.00	\$	12,160.00	0	0.00	\$	-	0%
130	HYDROMULCH SEEDING	AC	7	\$	1,500.00	\$	10,500.00	0	0.00	\$	-	0%
Extra Work Items												
131	TEMPORARY BASIN PUMPING	MD	15	\$	1,000.00	\$	15,000.00	4	1	\$	5,000.00	33%
132	CLEARANCE PRUNE TREE	EA	10	\$	150.00	\$	1,500.00	0	0.00	\$	-	0%
133	CROWN CLEANING PRUNE	EA	10	\$	250.00	\$	2,500.00	0	0.00	\$	-	0%
134	ROOT STIMULATION	EA	10	\$	150.00	\$	1,500.00	0	0.00	\$	-	0%
Cash Allowance Items												
135	Street Cut Permit	CA	1	\$	5,000.00	\$	5,000.00	0	0.00	\$	-	0%
136	Street Lights	CA	1	\$	10,000.00	\$	10,000.00	0	0.00	\$	-	0%
137	Work Change Directives	CA	1	\$	500,000.00	\$	500,000.00	0	0.00	\$	-	0%

\$ 13,797,688.00

This Month's Billings \$ 399,375.00



Actual Level of Effort Remaining Work
Actual Work Critical Remaining W..



Contract Amount:	\$13,797,688
Goal %	20.00%
Projected Goal%	0.00%
Goal \$	\$2,759,538
Project Goal \$	\$0

Page 1

MONTHLY SUBCONTRACTOR PAYMENT REPORTING FORMLegal Project Name: BRIAR BRANCH DETENTION BASIN & STORM SEWER IMPROVEMENTSOutline Agreement No.: _____ WBS No.: N-T17000-0021-3Contractor's Company Name: Reytec Construction Resources, Inc.Address: 1901 Hollister St, Houston, TX 77080**CERTIFICATION**

Letti Hernandez, Contractor's Representative for the above referenced Contract, hereby certifies that (1) Contractor has paid all subcontractors, except those noted below, (2) Contractor made such payments (a) in proportion to the amount City paid Contractor and (b) in accordance and compliance with all applicable Contract Documents and laws; and (3) Contractor withheld no sums from any subcontractor for allegations of deficiency in Work. The term "subcontractor", as used herein, includes all persons or firms furnishing work, materials, services or equipment Contractor ordered incorporated into Work or placed near the Project for which the City made partial payment.

EXCEPTION: Contractor sent Payment Notifications to the following subcontractors explaining why Contractor withheld payment. Copies are attached.

Subcontractor Name: _____

Subcontractor Name: _____

Street Address: _____

Street Address: _____

City, State, and Zip Code: _____

City, State, and Zip Code: _____

Amount of Payment Withheld: _____

Amount of Payment Withheld: _____

Date Payment First Withheld: _____

Date Payment First Withheld: _____

Description of Good Faith Reason: _____

Description of Good Faith Reason: _____

Letti Hernandez
(Signature of Contractor's Representative)

Letti Hernandez
(Print or Type Name of Contractor's Representative)

07/03/2025

Date

3162

The Goodman Corporation
3200 Travis Street, Ste. 200
Houston, TX 77006

Invoice

Bill To
TIRZ 17 Memorial City Redevelopment Autho c/o Hawes Hill & Associates LLP P.O. Box 22167 Houston, TX 77227-2167

Date	Invoice #
6/30/2025	6-2025-61

Terms	Project
	MCT116

Item	Description	Rate	Prior %	Current %	Amount
Contract Services	Task 1 – Grant Initiation and Execution	20,000.00	100%	0.00%	0.00
Contract Services	Task 2 – National Environmental Policy Act (NEPA)	1,500.00	55%	20.00%	300.00
Contract Services	Task 3 – Procurement Assistance	17,500.00	85%	5.00%	875.00
Contract Services	Task 4 – Project/Contract Management	31,500.00	0%	0.00%	0.00
Contract Services	Task 5 – Lifecycle Reporting and Disbursement Assistance	36,000.00	0%	0.00%	0.00
	Memorial Dr. Phase 2				

Please send payment to:
The Goodman Corporation
911 W. Anderson Lane, Ste. 200
Austin, TX 78757

Total	\$1,175.00
Balance Due	\$1,175.00

Phone #	Fax #
713-951-7951	713-951-7957

SB
Code No. 1738B
7-11-2025

The Goodman Corporation
 3200 Travis Street, Ste. 200
 Houston, TX 77006

Invoice

Bill To
TIRZ 17 Memorial City Redevelopment Autho c/o Hawes Hill & Associates LLP P.O. Box 22167 Houston, TX 77227-2167

Date	Invoice #
6/30/2025	6-2025-59

Terms	Project
	MCT113

Item	Description	Rate	Prior %	Current %	Amount
Contract Services	Task 1 – Grant Initiation and Execution	19,436.00	100%	0.00%	0.00
Contract Services	Task 2 – National Environmental Policy Act	28,506.00	100%	0.00%	0.00
Contract Services	Task 3 – Design and Bid Phase Compliance	26,161.00	100%	0.00%	0.00
Contract Services	Task 4 – Construction Phase Compliance	39,057.00	26%	3.80%	1,484.17
Contract Services	Task 5 – Lifecycle Reporting and Disbursement Assistance	43,221.00	19%	2.30%	994.08
	W-140 Detention				

Please send payment to:
 The Goodman Corporation
 911 W. Anderson Lane, Ste. 200
 Austin, TX 78757

Total	\$2,478.25
Balance Due	\$2,478.25

Phone #	Fax #
713-951-7951	713-951-7957

SB

Code No. 1741
 7-11-2025

3663



Please Remit To:
Gauge Engineering LLC
PO Box 312
Des Moines, IA 50302
319-841-4000

Memorial City Redevelopment Authority/TIRZ 17
9600 Long Point Rd, Suite 200
Houston, TX 77055

July 15, 2025
Project No: 2501778-0000
Invoice No: 190064
Invoice Total: 450.00

Project 2501778-0000 TIRZ 17 - On-call Engineering - 2024/2025

Professional Services Through July 11, 2025

Phase 001 On-call Engineering

Professional Personnel

	Hours	Rate	Amount
Principal			
St John, Derek	2.00	225.00	450.00
Totals	2.00		450.00
Total Labor			450.00

Billing Limits

	Current	Prior	To-Date
Total Billings	450.00	14,950.00	15,400.00
Limit			25,000.00
Remaining			9,600.00

Total this Phase 450.00

Total this Invoice 450.00

SB Code No. 6322
7-15-2025



Please Remit To:
Gauge Engineering LLC
PO Box 312
Des Moines, IA 50302
319-841-4000

Memorial City Redevelopment Authority/TIRZ 17
 9600 Long Point Rd, Suite 200
 Houston, TX 77055

July 15, 2025
 Project No: 2501799-0000
 Invoice No: 190070
Invoice Total: 26,061.25

Project 2501799-0000 W140 Expansion - CPS

Professional Services Through July 11, 2025

Phase 001 Construction Phase Services

Professional Personnel

	Hours	Rate	Amount	
Project Manager				
Ali, Muhammad	2.00	225.00	450.00	
Project Manager				
Greaney, David	15.00	180.00	2,700.00	
Graduate Engineer				
Dingilius Wallace, Shawn	1.00	135.00	135.00	
Totals	18.00		3,285.00	
Total Labor				3,285.00

Billing Limits	Current	Prior	To-Date
Total Billings	3,285.00	23,547.50	26,832.50
Limit			132,100.00
Remaining			105,267.50

Total this Phase 3,285.00

Phase 002 Lift Station Services Support - LJA

Consultants

LJA Engineering, Inc.				
7/3/2025	LJA Engineering, Inc.	CPS	653.95	
7/3/2025	LJA Engineering, Inc.	CPS	275.00	
7/3/2025	LJA Engineering, Inc.	CPS	2,406.25	
7/3/2025	LJA Engineering, Inc.	CPS	3,731.95	
7/3/2025	LJA Engineering, Inc.	CPS	1,512.50	
7/3/2025	LJA Engineering, Inc.	CPS	7,837.50	
7/3/2025	LJA Engineering, Inc.	CPS	6,350.00	
Total Consultants			22,767.15	22,767.15

Billing Limits	Current	Prior	To-Date
Total Billings	22,767.15	0.00	22,767.15
Limit			60,528.00
Remaining			37,760.85

Total this Phase 22,767.15

Phase 004 Expenses

Project	2501799-0000	W140 Expansion - CPS	Invoice	190070
---------	--------------	----------------------	---------	--------

Reimbursable Expenses

Mileage				9.10	
	Total Reimbursables			9.10	9.10
Billing Limits		Current	Prior	To-Date	
Total Billings		9.10	119.76	128.86	
Limit				1,835.00	
Remaining				1,706.14	
			Total this Phase		9.10
			Total this Invoice		<u>26,061.25</u>

SB

Code No. 1741
7-15-2025



Please Remit To:
Gauge Engineering LLC
PO Box 312
Des Moines, IA 50302
319-841-4000

Memorial City Redevelopment Authority/TIRZ 17
9600 Long Point Rd, Suite 200
Houston, TX 77055

July 15, 2025
Project No: 2501798-0000
Invoice No: 190069
Invoice Total: 3,774.38

Project 2501798-0000 W140 Expansion - CMT

Professional Services Through July 11, 2025

Phase 001 Construction Materials Testing

Consultants

Geotest Engineering, Inc.

6/27/2025

Geotest Engineering, Inc.

CMT

3,774.38

Total Consultants

3,774.38

3,774.38

Billing Limits

Total Billings

Current

Prior

To-Date

Limit

3,774.38

24,158.48

27,932.86

Remaining

88,504.00

60,571.14

Total this Phase

3,774.38

Total this Invoice

3,774.38

SB

Code No. 1741
7-15-2025



Please Remit To:
Gauge Engineering LLC
PO Box 312
Des Moines, IA 50302
319-841-4000

Memorial City Redevelopment Authority/TIRZ 17
 9600 Long Point Rd, Suite 200
 Houston, TX 77055

July 15, 2025
 Project No: 2501797-0000
 Invoice No: 190068
Invoice Total: 28,867.40

Project 2501797-0000 W140 Expansion - CM-I

Professional Services Through July 11, 2025

Phase 001 Construction Management & Inspection

Professional Personnel

	Hours	Rate	Amount	
Olivares, Omar	3.00	63.00	189.00	
Inspector				
Thigpen, Christopher	49.00	130.00	6,370.00	
Project Manager				
Greaney, David	11.00	180.00	1,980.00	
Senior Inspector				
Chapa, Roberto	152.00	130.00	19,760.00	
Totals	215.00		28,299.00	
Total Labor				28,299.00
Billing Limits	Current	Prior	To-Date	
Total Billings	28,299.00	128,201.80	156,500.80	
Limit			463,710.00	
Remaining			307,209.20	
		Total this Phase		28,299.00

Phase 002 Expenses

Reimbursable Expenses

Mileage			568.40	
Total Reimbursables			568.40	568.40
Billing Limits	Current	Prior	To-Date	
Total Billings	568.40	4,196.50	4,764.90	
Limit			18,700.00	
Remaining			13,935.10	
		Total this Phase		568.40
		Total this Invoice		28,867.40

SB

Code No. 1741
 7-15-2025

MEMORIAL CITY REDEVELOPMENT AUTHORITY TIRZ No. 17,
HOUSTON, TEXAS

AGENDA MEMORANDUM

TO: Memorial City Redevelopment Authority TIRZ No. 17 Board of Directors

FROM: Executive Director

SUBJECT: Agenda Item Materials

6. Convene in Executive Session pursuant to Section 551.072, Texas Government Code, to deliberate the purchase, exchange, lease or value of real property; and pursuant to Section 551.071, Texas Government Code, to conduct a private consultation with attorney.
7. Reconvene in Open Session and authorize appropriate actions regarding purchase, exchange, lease or value of real property; and consultation with attorney.
 - a. Detention Basin C.
 - i. Ratify engagement of Berg Oliver Associates for ESA Phase 1 services.
 - ii. Ratify HR Green Task Order for phase 1 boundary survey services.
 - iii. Approve HR Green Task Order for phase 2 topographic survey services.