



# **TIRZ 17 BOARD MEETING**

## **Briar Branch (W140-01-00) Channel & Straws Improvements**

WBS No. N-T17000-0018-3

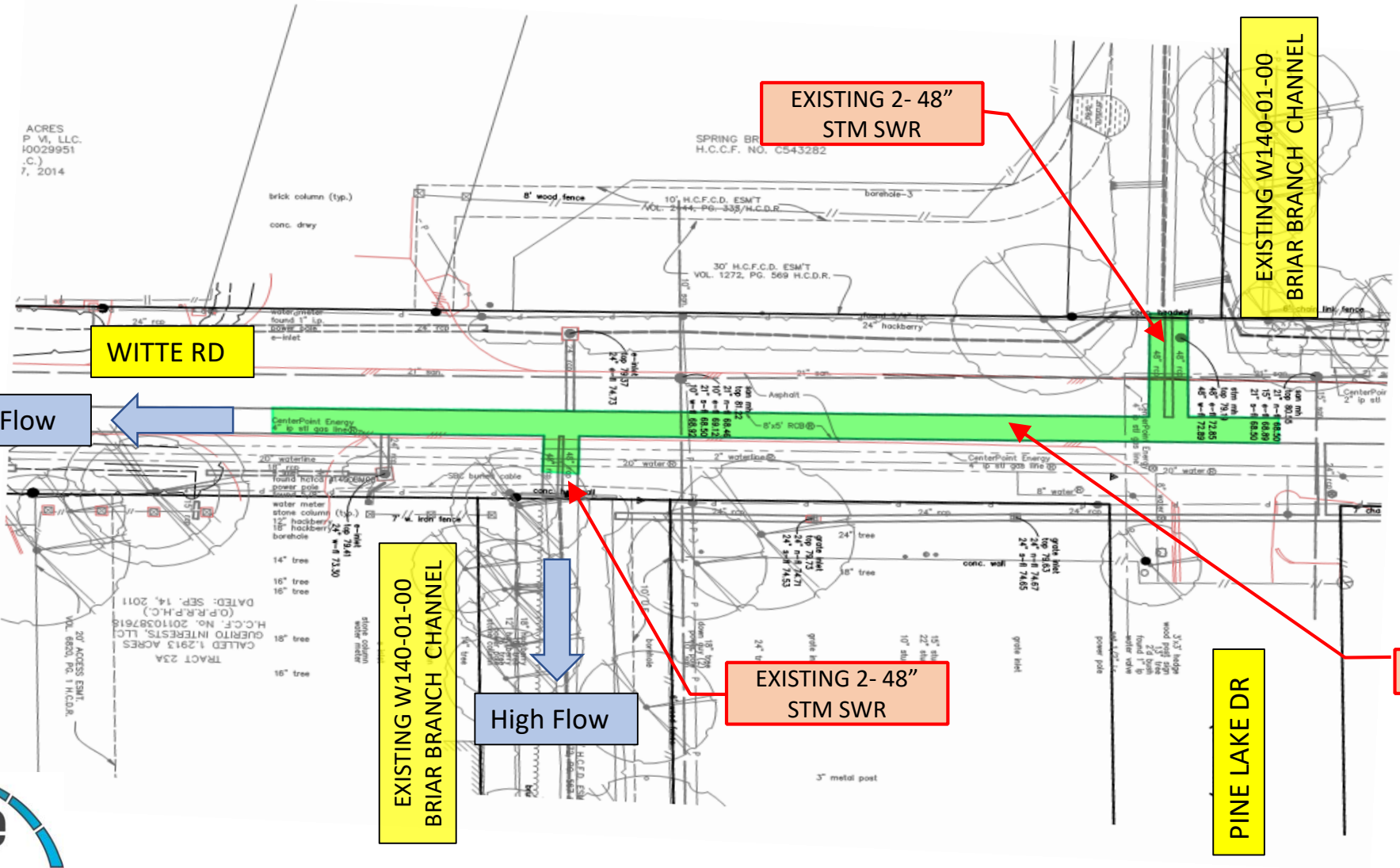
T-1734 & T-1734B

January 28, 2020



# EXISTING CONDITIONS

IH - 10



# APPROVED ENGINEERING DESIGN

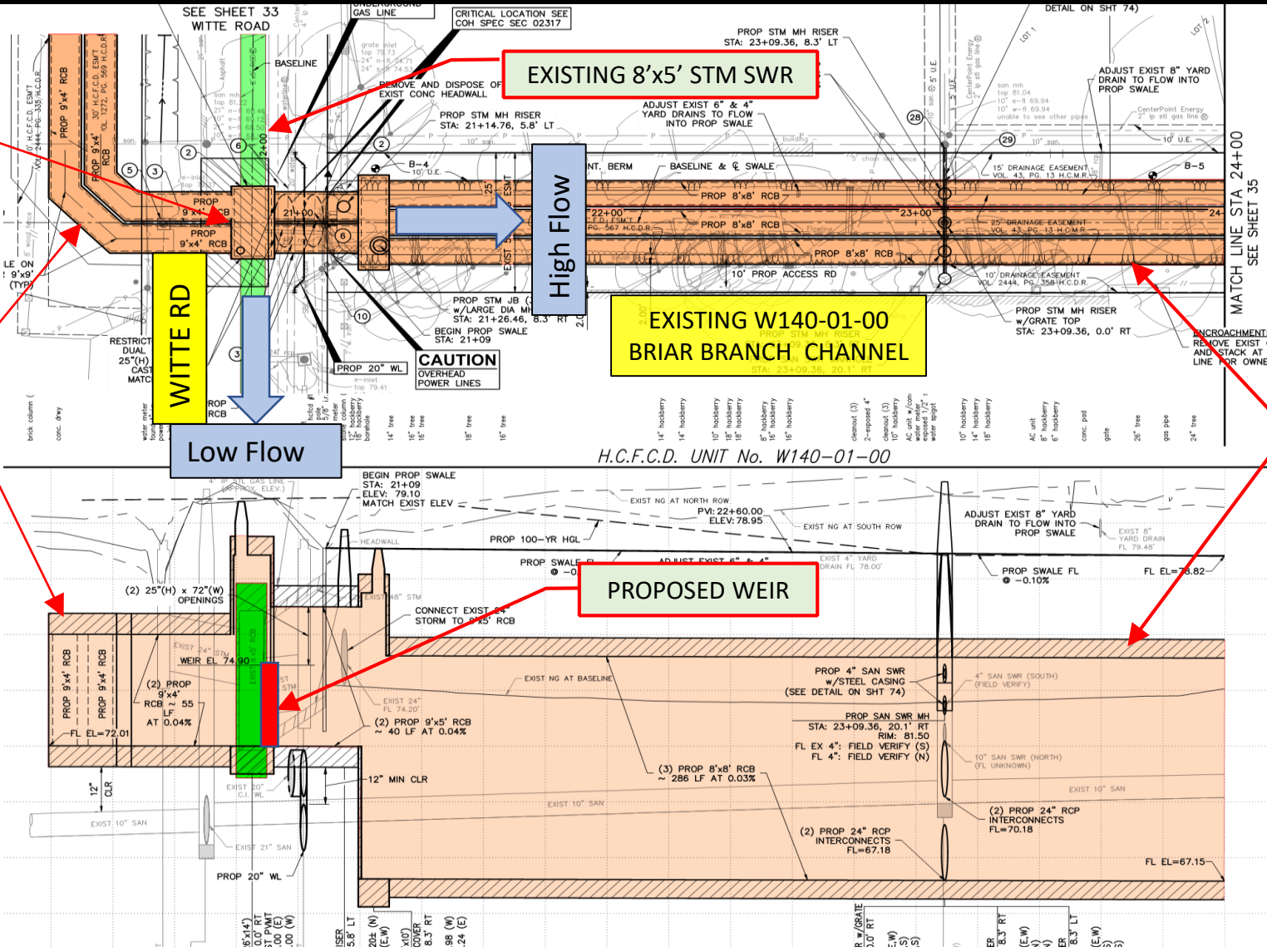
PROPOSED JUNCTION BOX WITH WEIR

PROPOSED 2- 9'x4' STM SWR BOXES

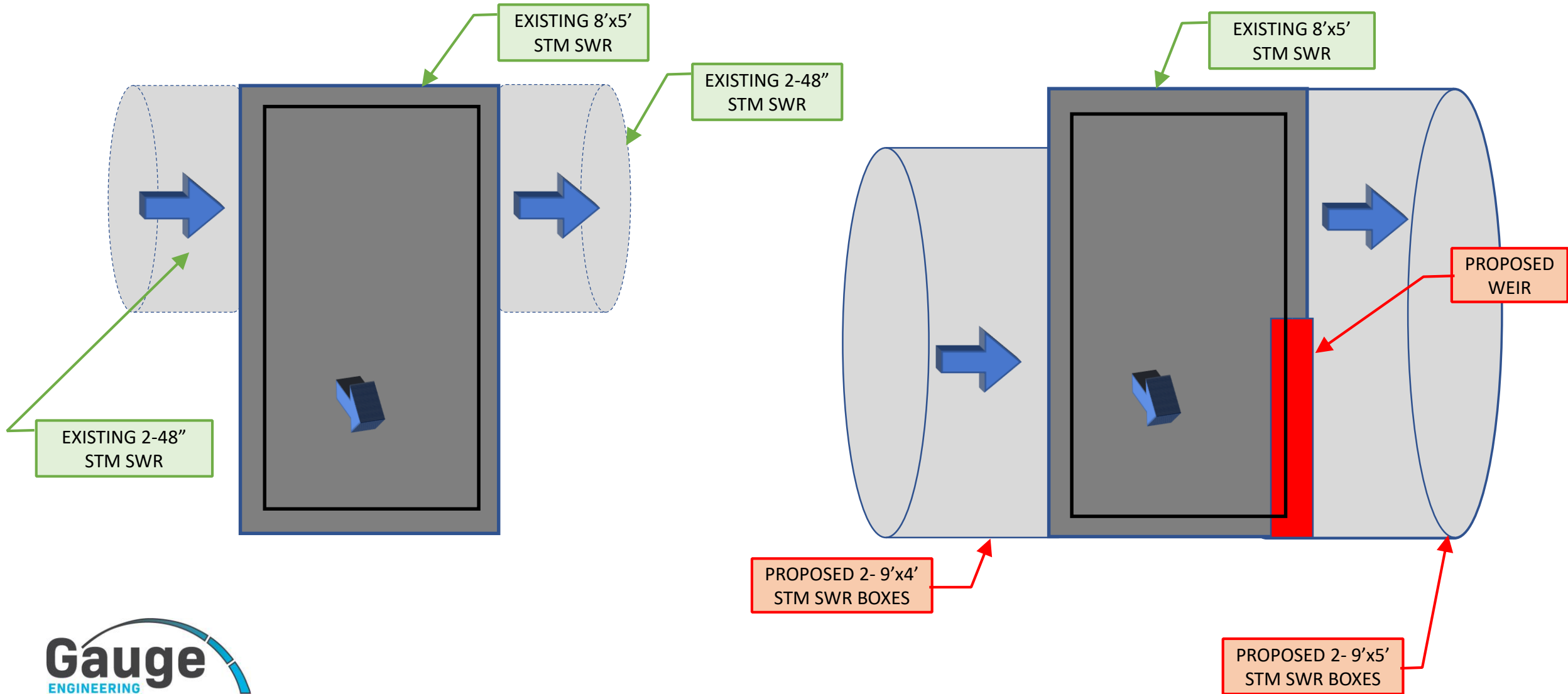
EXISTING 8'x5' STM SWR

EXISTING W140-01-00 BRIAR BRANCH CHANNEL

PROPOSED 3- 8'x8' STM SWR BOXES



# EXISTING AND PROPOSED PROFILE



# BRIAR BRANCH MAINTENANCE ACCESS RAMP





# QUESTIONS