

**DRAFT**

# April 2016 Event Analysis



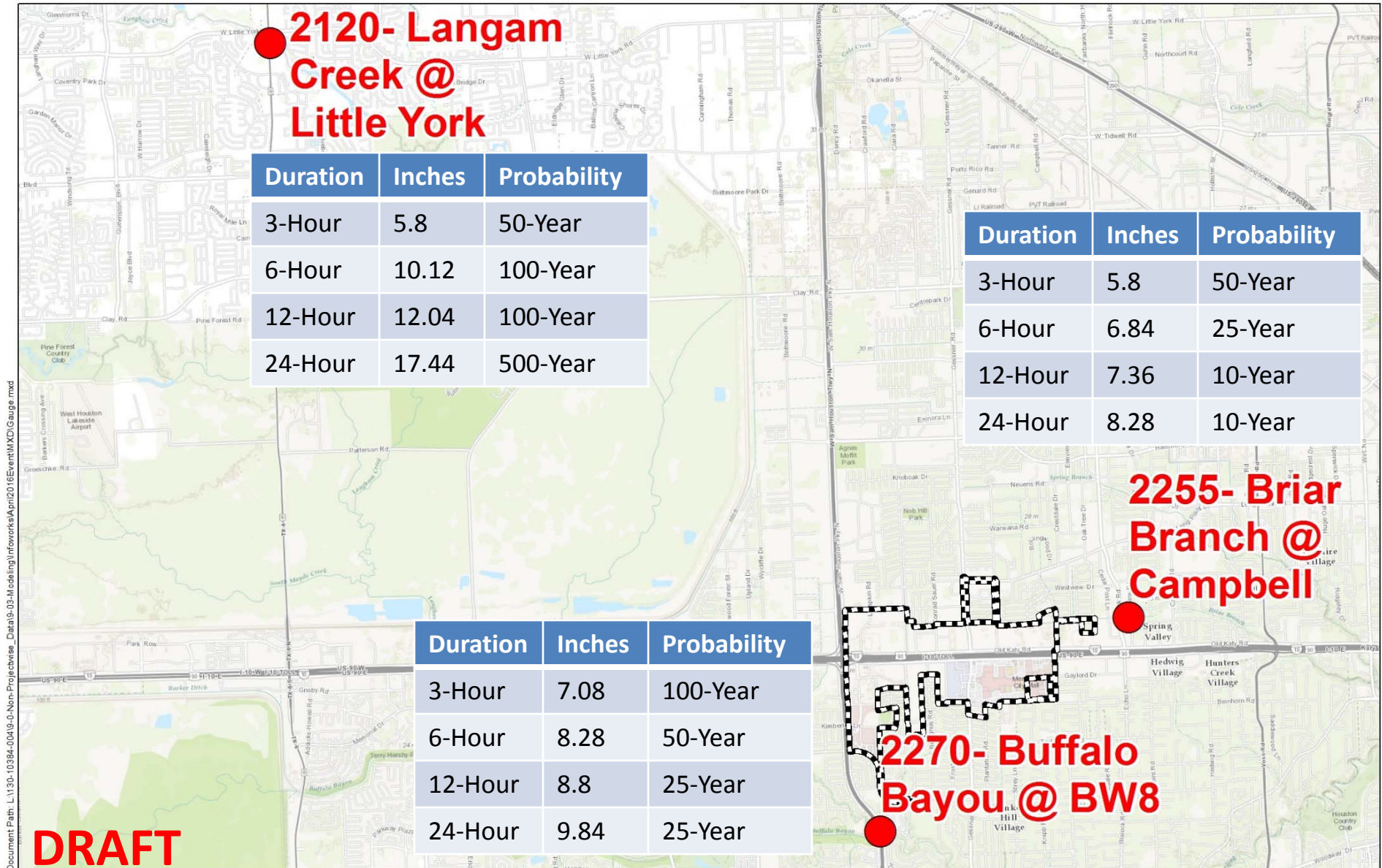
**April 26, 2016**

- April 19, 2016 Event
  
- Event Comparison
  - 2009, 2015, 2016
  
- Flooding Survey
  
- Questions

**DRAFT**

# Magnitude of the Event

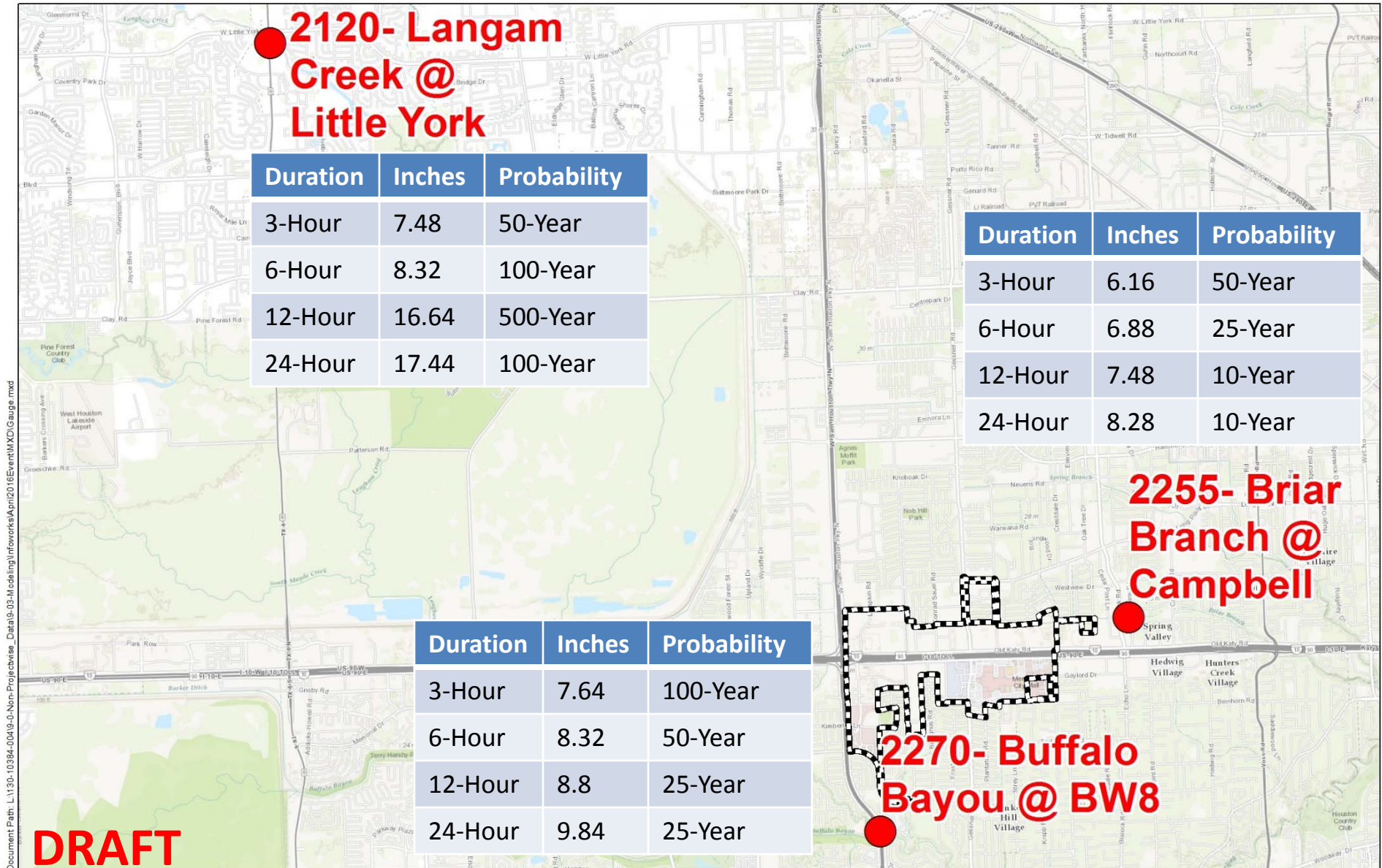
# April 2016 Event



Document Path: L:\130-10384-00419-0-Non-Proje cbwise\_Data\9-03-McModeling\InfoWorks\April2016Event\WCD\Gauge.mxd

# Magnitude of the Event

# April 2016 Event



Document Path: L:\130-10384-00419-0-Non-Proje cbwise\_Data\9-03-Modeling\InfoWorks\April2016\Event\WCD\Gauge.mxd

## Return Period and Probability

**DRAFT**

Region 2--Brays, Buffalo, Greens, Hunting, Luce, West Fork San Jacinto, and White Oak											
Period	5-min	15-min	30-min	1-hour	2-hour	3-hour	6-hour	12-hour	1-day	2-day	4-day
2-year	0.7	1.1	1.5	2.0	2.3	2.6	3.1	3.7	4.4	5.0	5.8
5-year	0.8	1.4	1.8	2.5	3.1	3.5	4.3	5.1	6.2	7.1	8.1
10-year	0.9	1.5	2.1	2.9	3.6	4.1	5.1	6.2	7.6	8.6	9.8
25-year	1.0	1.7	2.4	3.4	4.3	5.0	6.4	7.8	9.6	10.8	12.1
50-year	1.1	1.9	2.7	3.8	5.0	5.8	7.6	9.2	11.3	12.5	14.0
100-year	1.2	2.1	3.0	4.3	5.7	6.7	8.9	10.8	13.2	14.5	15.9
500-year	1.4	2.6	3.8	5.5	7.6	9.2	12.8	15.5	18.9	20.0	21.1

April 2016								
Gauge	5-min	15-min	30-min	1-hour	3-hour	6-hour	12-hour	24-hour
2255 - Briar Branch at Campbell	0.72	1.52	2.84	4.08	6.16	6.88	7.48	8.28
2270 - Buffalo Bayou at BW8	0.8	1.74	2.92	4.44	7.64	8.32	8.8	9.84
2120 - Langham at W. Little York	0.72	1.64	2.52	4.24	7.48	8.32	16.64	17.44

- W140-01 Basin at 7:45 am



- Beltway 8 & I-10 at 8:20 am



- Lumpkin Road between Westview Drive and I-10 at 8:40 am





- Lumpkin Basin at 8:50 am



- Lumpkin-New inlets on Spillers Ln at 9:00



- Gessner Rd near Westview at 9:20 am



- Town & Country Blvd near I-10 at 10:00am



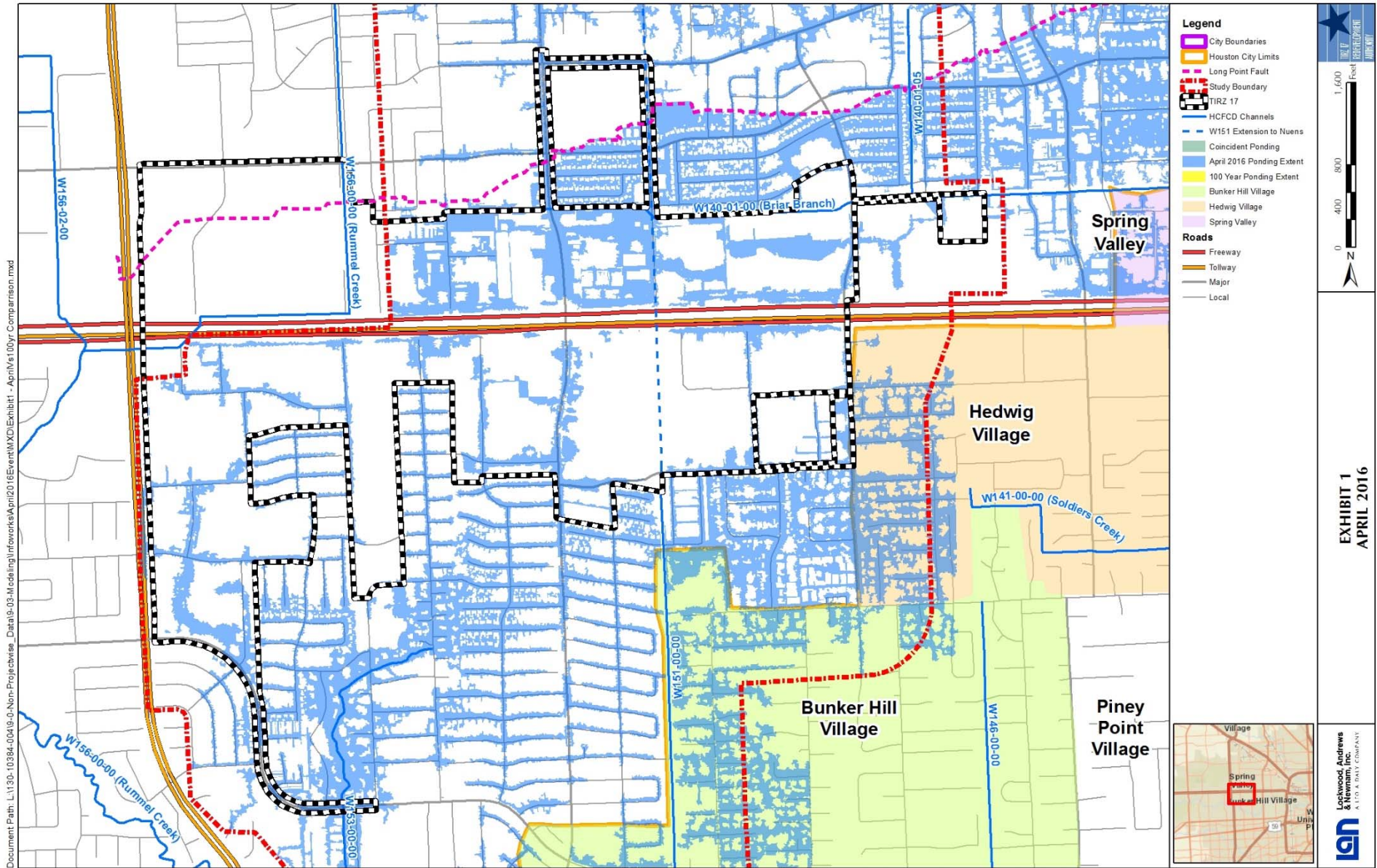
- Memorial Drive near Somerset Place at 11:30am



# Simulated Inundation

# DRAFT

# April 2016 Event

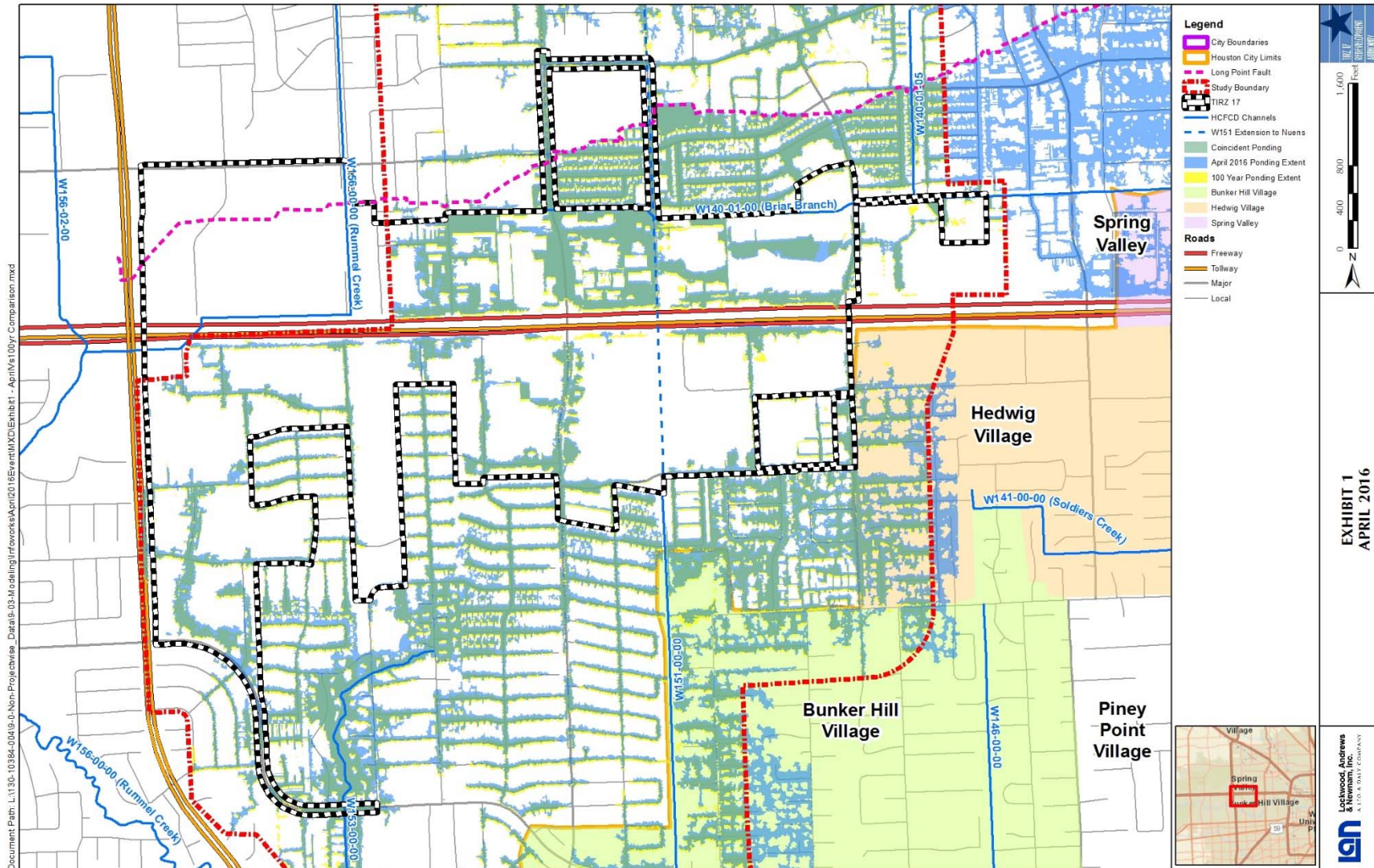


April 2016								
Gauge	5-min	15-min	30-min	1-hour	3-hour	6-hour	12-hour	24-hour
2255 - Briar Branch at Campbell	0.72	1.52	2.84	4.08	6.16	6.88	7.48	8.28
2270 - Buffalo Bayou at BW8	0.8	1.74	2.92	4.44	7.64	8.32	8.8	9.84
2120 - Langham at W. Little York	0.72	1.64	2.52	4.24	7.48	8.32	16.64	17.44

May 2015								
Gauge	5-min	15-min	30-min	1-hour	3-hour	6-hour	12-hour	24-hour
2255 - Briar Branch at Campbell	0.6	1.2	2.0	3.8	6.4	7.8	7.8	9.0
2270 - Buffalo Bayou at BW8	0.6	1.4	2.4	4.3	8.3	10.1	10.2	11.5
2120 - Langham at W. Little York	0.5	1.4	2.2	3.9	6.9	8.6	8.8	10.0

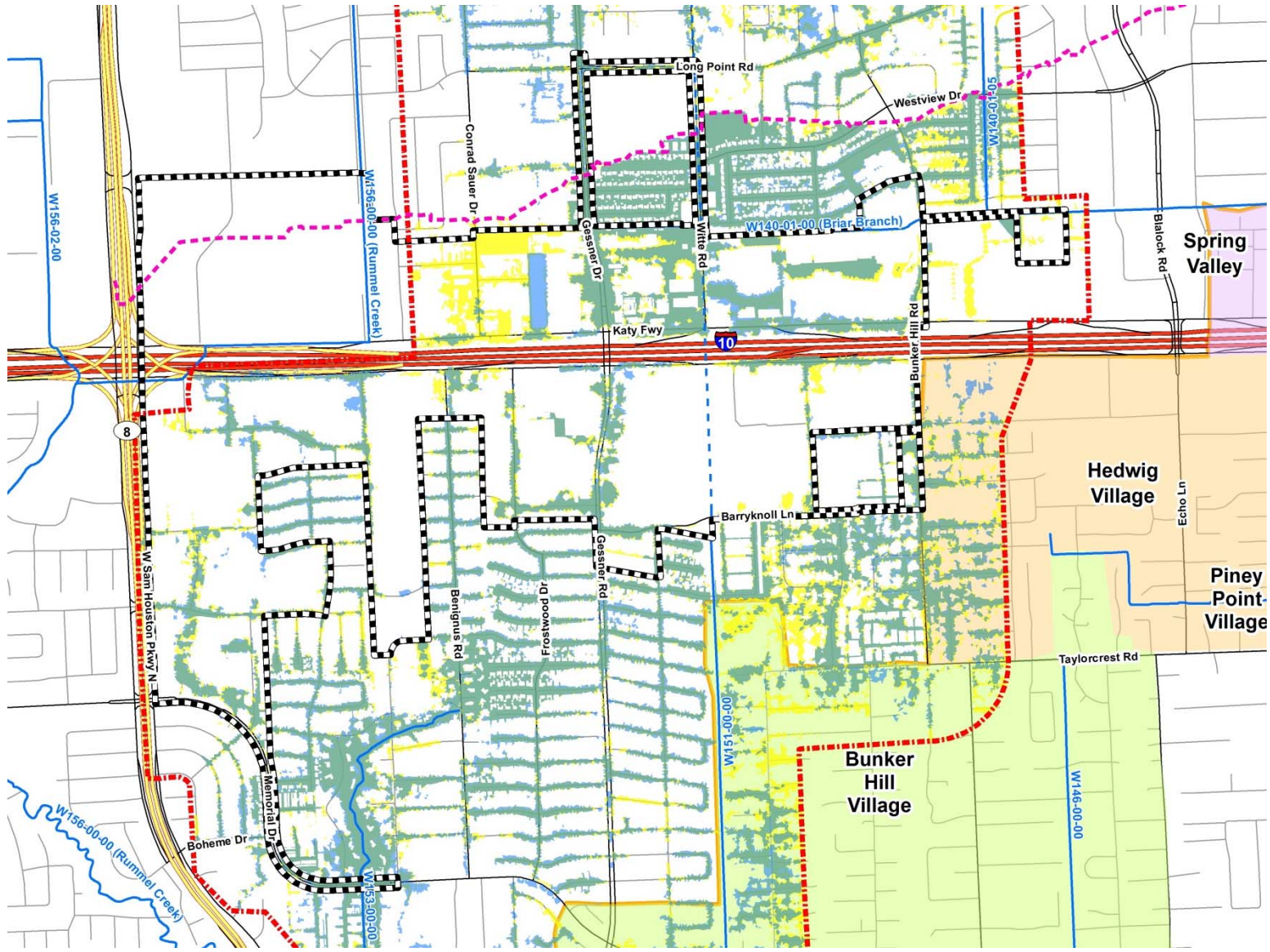
April 2009								
Gauge	5-min	15-min	30-min	1-hour	3-hour	6-hour	12-hour	24-hour
2255 - Briar Branch at Campbell	0.0	0.1	1.1	3.2	5.0	5.0	7.7	8.2
2270 - Buffalo Bayou at BW8	0.0	0.5	2.0	4.04	7.0	7.2	9.0	9.5
2120 - Langham at W. Little York								

# Flooding Extents – April '16 vs 100yr **DRAFT** April 2016 Event

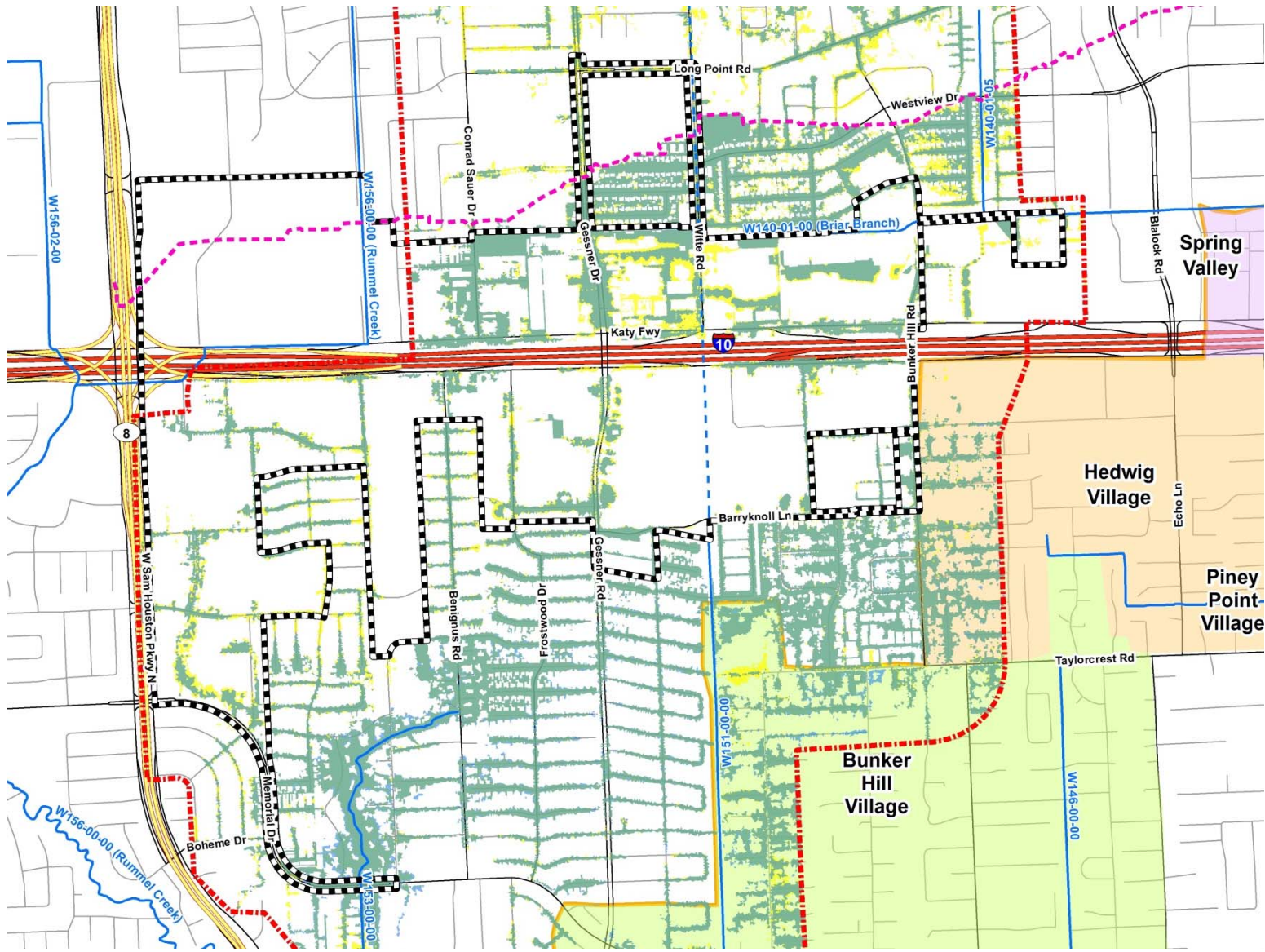




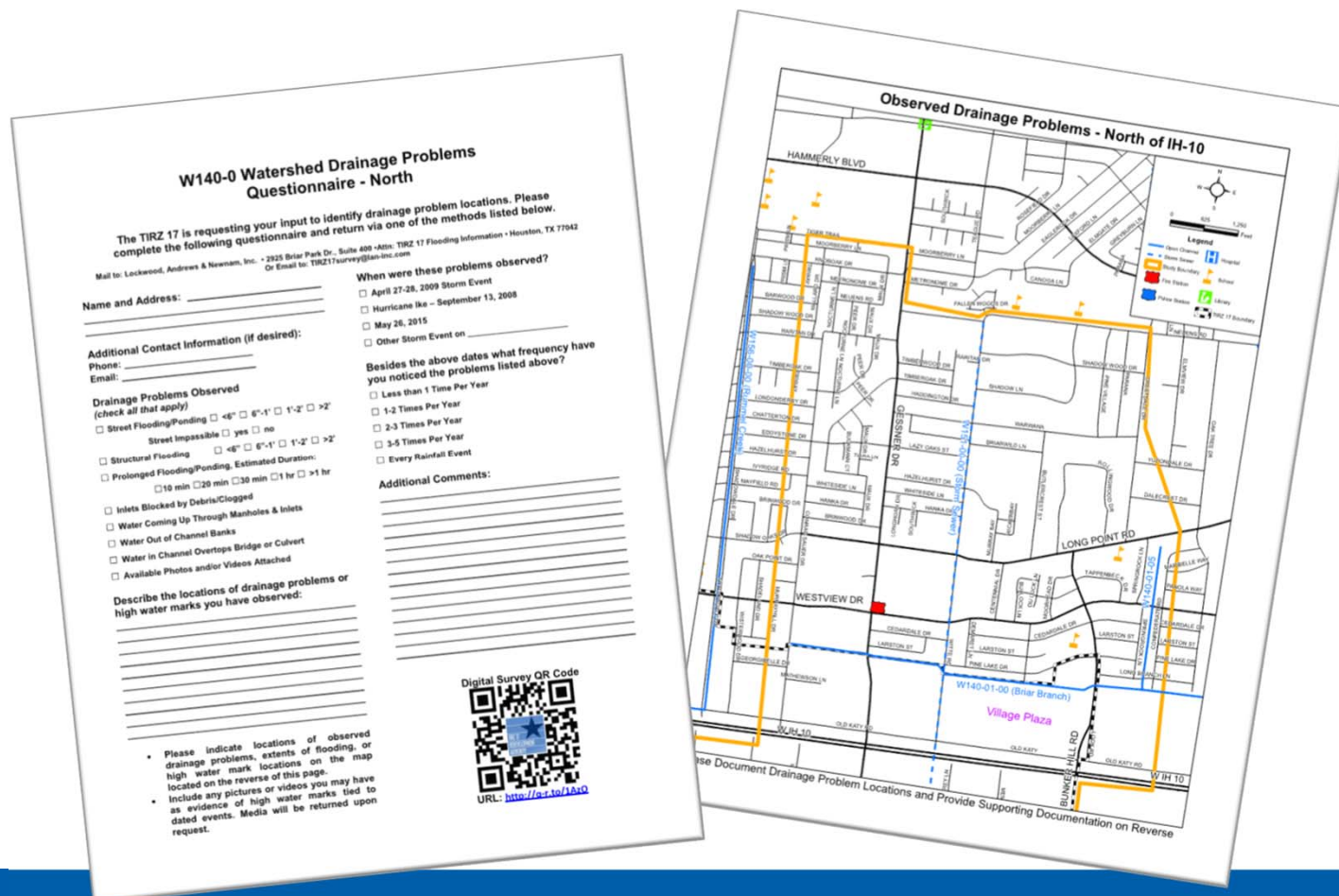
# Flooding Extents – April '09 vs 100yr **DRAFT** April 2016 Event



# Flooding Extents – May '15 vs 100yr **DRAFT** April 2016 Event



- Hard Copy Survey
- Online Survey
  - Link on TIRZ Website [WWW.HoustonTIRZ17.org](http://WWW.HoustonTIRZ17.org)



**DRAFT**

---

# QUESTIONS