

# Briar Branch (W140-01-00) Straws Evaluation

September 29, 2015



# Scope of work

Briar Branch  
Straws

## Objective

- Evaluate Optimization Opportunities for the Briar Branch “Straw” Improvements

## Scope of work

- Utilize Comprehensive RDS Model
- Incorporate Current Channel and Straw Design
- Review Opportunities to Optimize Straws

9/29/2015



# Scope of work

Briar Branch  
Straws

## Challenges

- **Demonstrating No Adverse Impacts**
  - Balance between benefit and no-impact
- **Topographic Challenges**
  - Ex: Westview lower than channel

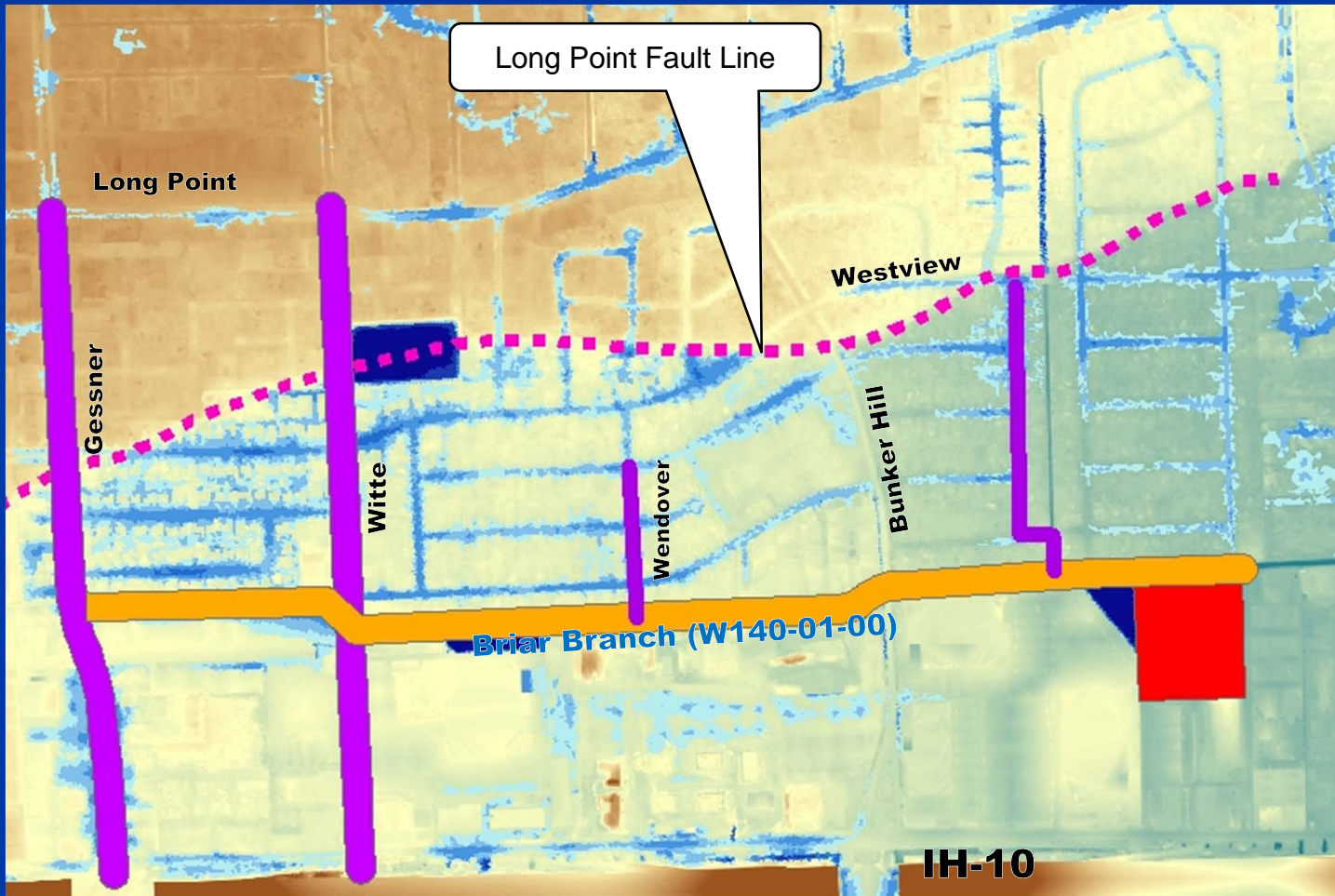
9/29/2015



# RDS Improvements

## Briar Branch Straws

10-Year 24-Hour Storm Event



### Legend

- TIRZ 17
- Storm Sewer
- HCFCD Channels
- CIP Projects
  - Standard Conveyance
  - Channel Improvements
  - Detention Locations
- Depth of Ponding (ft)
  - <0.25
  - 0.25 - 0.50
  - 0.50 - 1.0
  - 1.0 - 2.0
  - 2.0 - 5.0
  - >5.0
- Existing Ponding Extent

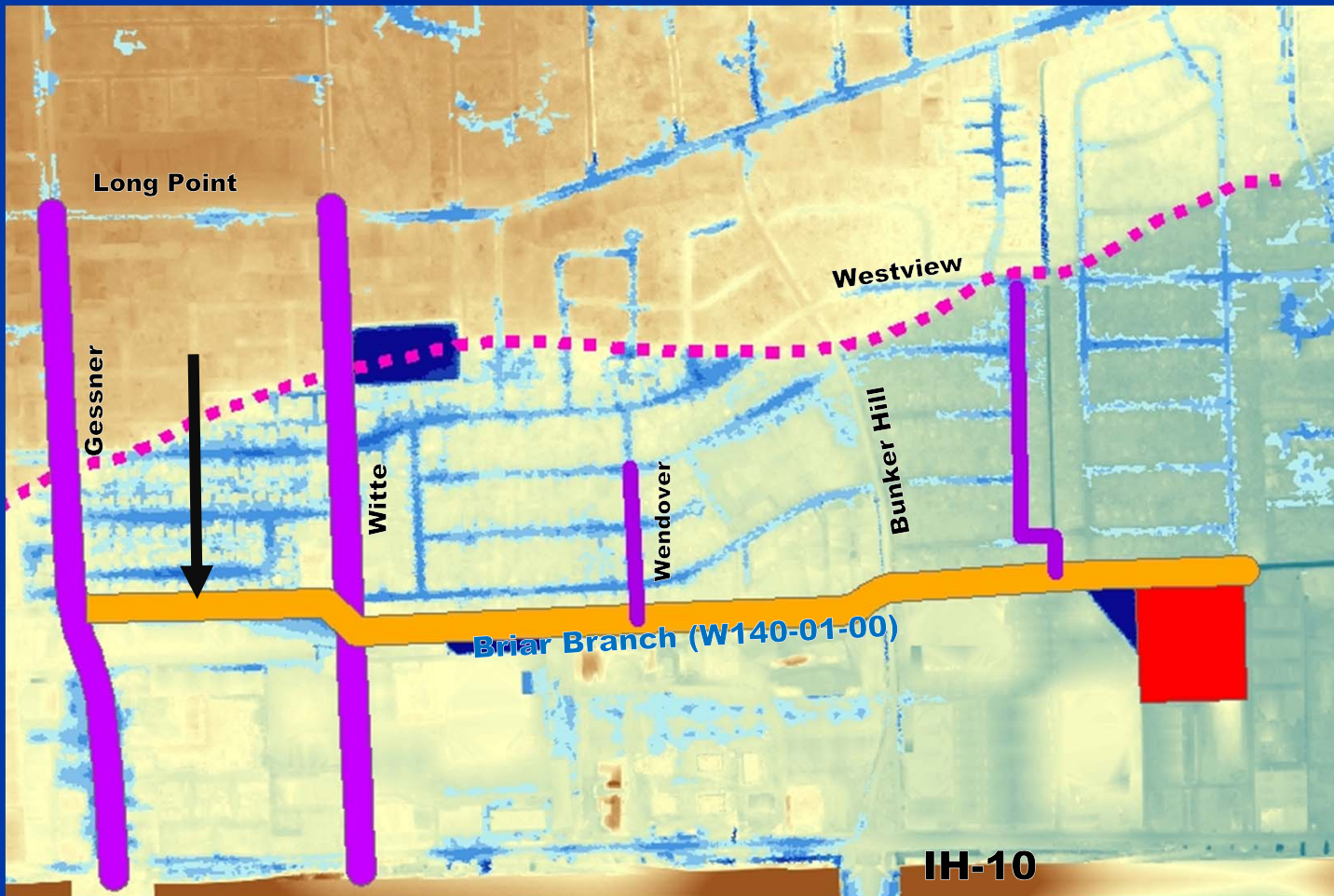
9/29/2015



# RDS Improvements

## Briar Branch Straws

10-Year 24-Hour Storm Event



### Legend

- TIRZ 17
- Storm Sewer
- HCFCD Channels
- CIP Projects**
  - Standard Conveyance
  - Channel Improvements
  - Detention Locations
- Depth of Ponding (ft)**
  - <0.25
  - 0.25 - 0.50
  - 0.50 - 1.0
  - 1.0 - 2.0
  - 2.0 - 5.0
  - >5.0
- Existing Ponding Extent

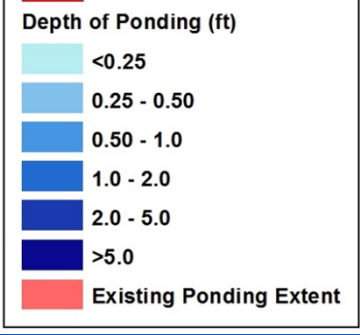
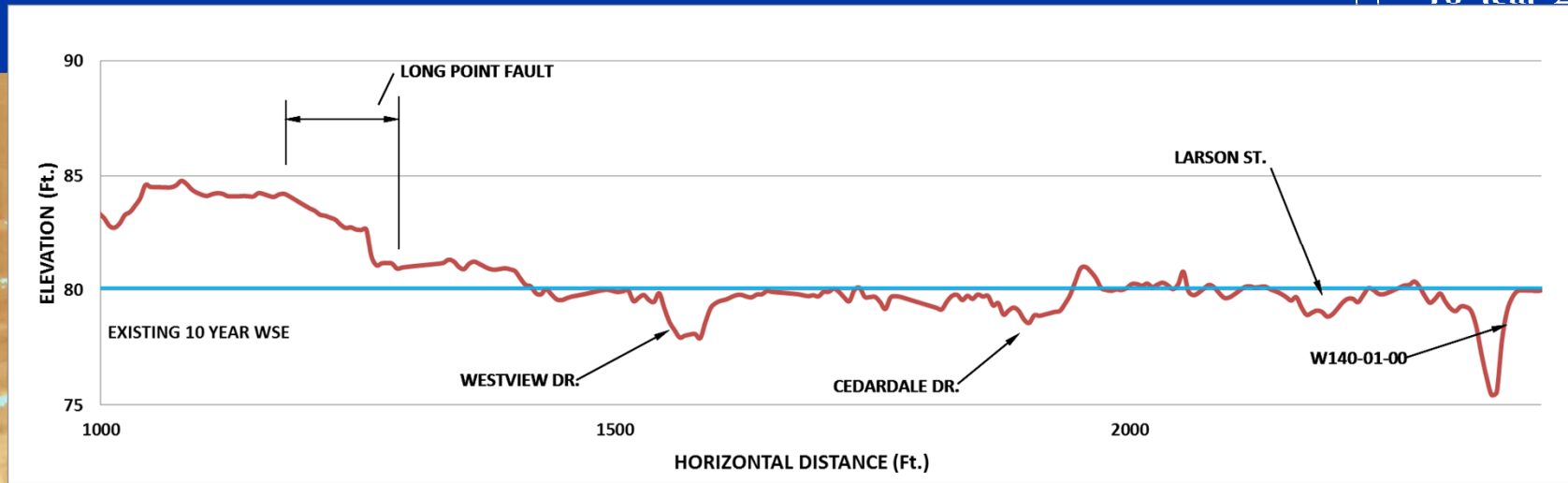
9/29/2015



# RDS Improvements

## Briar Branch Straws

10-Year 24-Hour  
Event



9/29/2015



# Recommendations

Briar Branch  
Straws

- **Evaluated multiple options – presenting final recommendation**
- **Maximize potential benefit**
- **Sensitive to no adverse impact**
- **Recommendations provided to Klotz for final evaluation and no impact demonstration**

9/29/2015



# Proposed Conditions

## Briar Branch Straws

10-Year 24-Hour Storm Event



**Legend**

- TIRZ 17
- Storm Sewer
- HCFCD Channels
- CIP Projects**
- Standard Conveyance
- Channel Improvements
- Detention Locations
- Depth of Ponding (ft)**
- <0.25
- 0.25 - 0.50
- 0.50 - 1.0
- 1.0 - 2.0
- 2.0 - 5.0
- >5.0
- Existing Ponding Extent

9/29/2015





# Proposed Conditions

## Briar Branch Straws

10-Year 24-Hour Storm Event



### Legend

- TIRZ 17
- Storm Sewer
- HCFCD Channels
- CIP Projects**
- Standard Conveyance
- Channel Improvements
- Detention Locations
- Depth of Ponding (ft)**
- <0.25
- 0.25 - 0.50
- 0.50 - 1.0
- 1.0 - 2.0
- 2.0 - 5.0
- >5.0
- Existing Ponding Extent

9/29/2015



# Proposed Conditions

## Briar Branch Straws

### 10-Year 24-Hour Storm Event



#### Legend

- TIRZ 17
- Storm Sewer
- HCFCD Channels
- CIP Projects**
- Standard Conveyance
- Channel Improvements
- Detention Locations
- Depth of Ponding (ft)**
- <0.25
- 0.25 - 0.50
- 0.50 - 1.0
- 1.0 - 2.0
- 2.0 - 5.0
- >5.0
- Existing Ponding Extent

IH-10

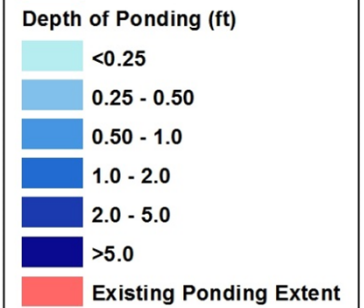
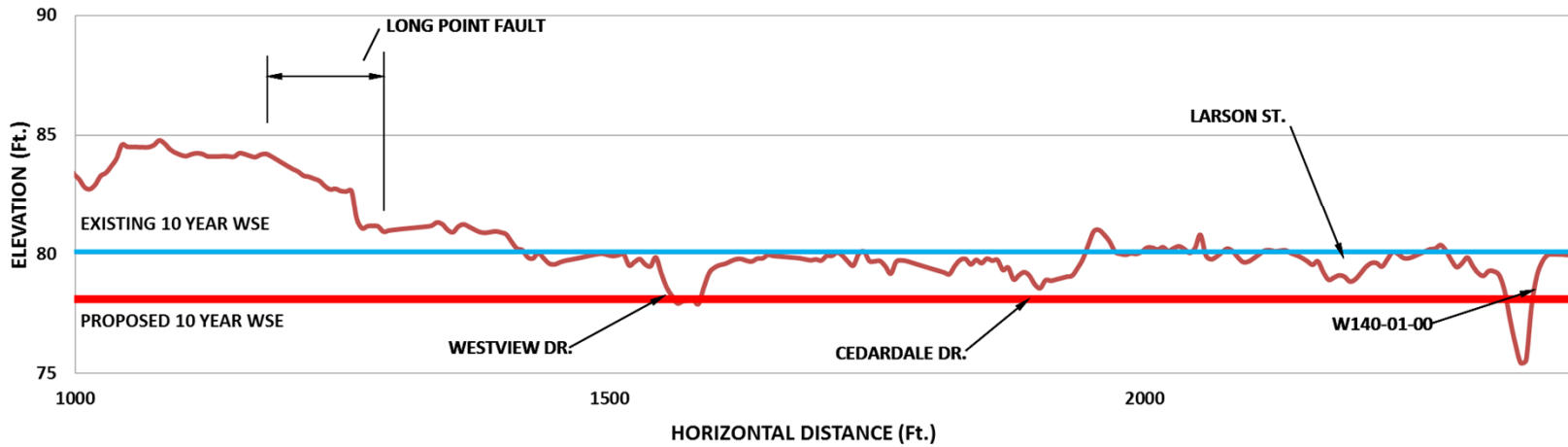
9/29/2015



# Proposed Conditions

## Briar Branch Straws

10-Year 24-Hour Event



9/29/2015



---

# Question & Answer Session

---

---