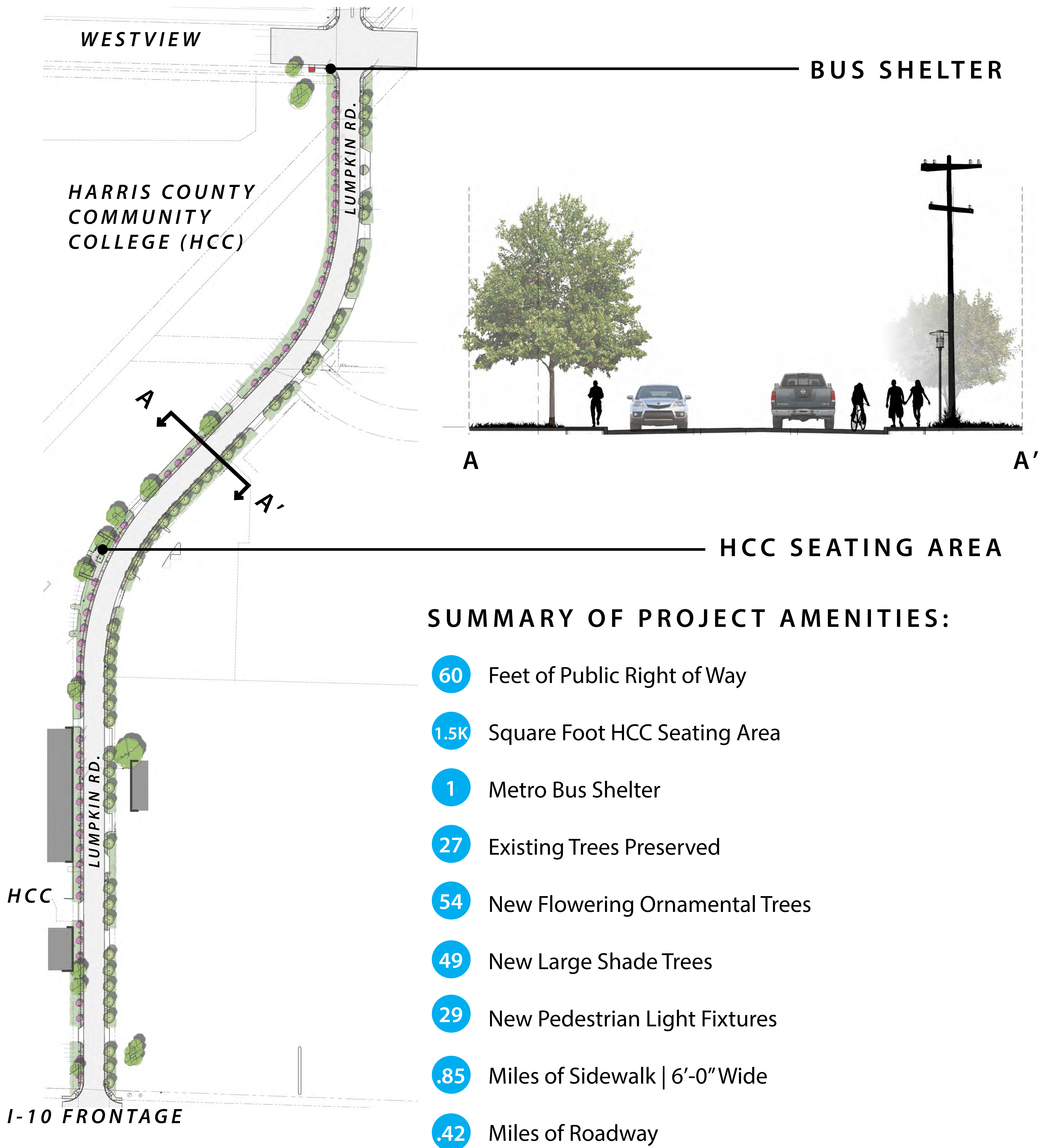




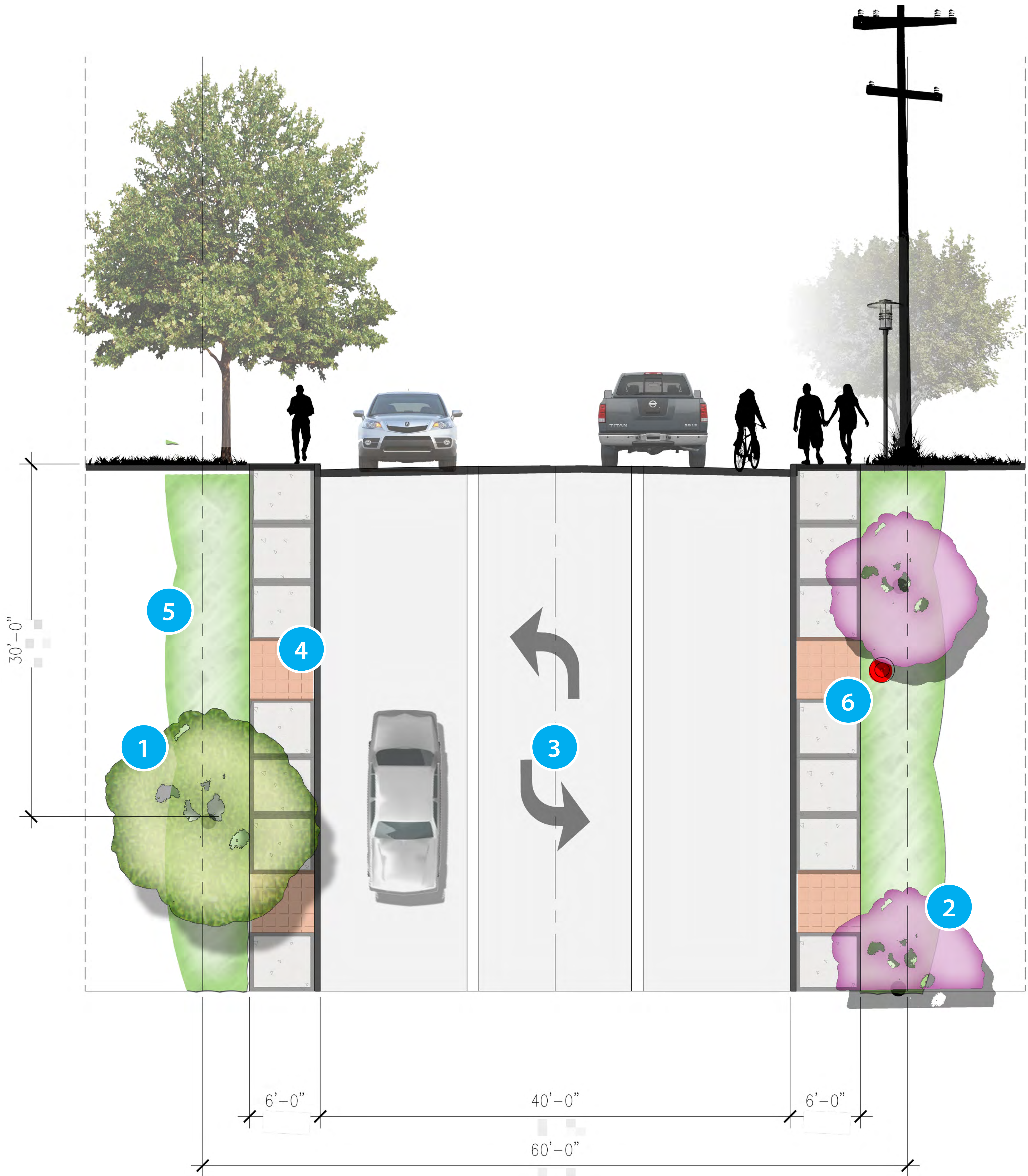
LUMPKIN ROAD

TIRZ 17
CAPITAL PROJECT

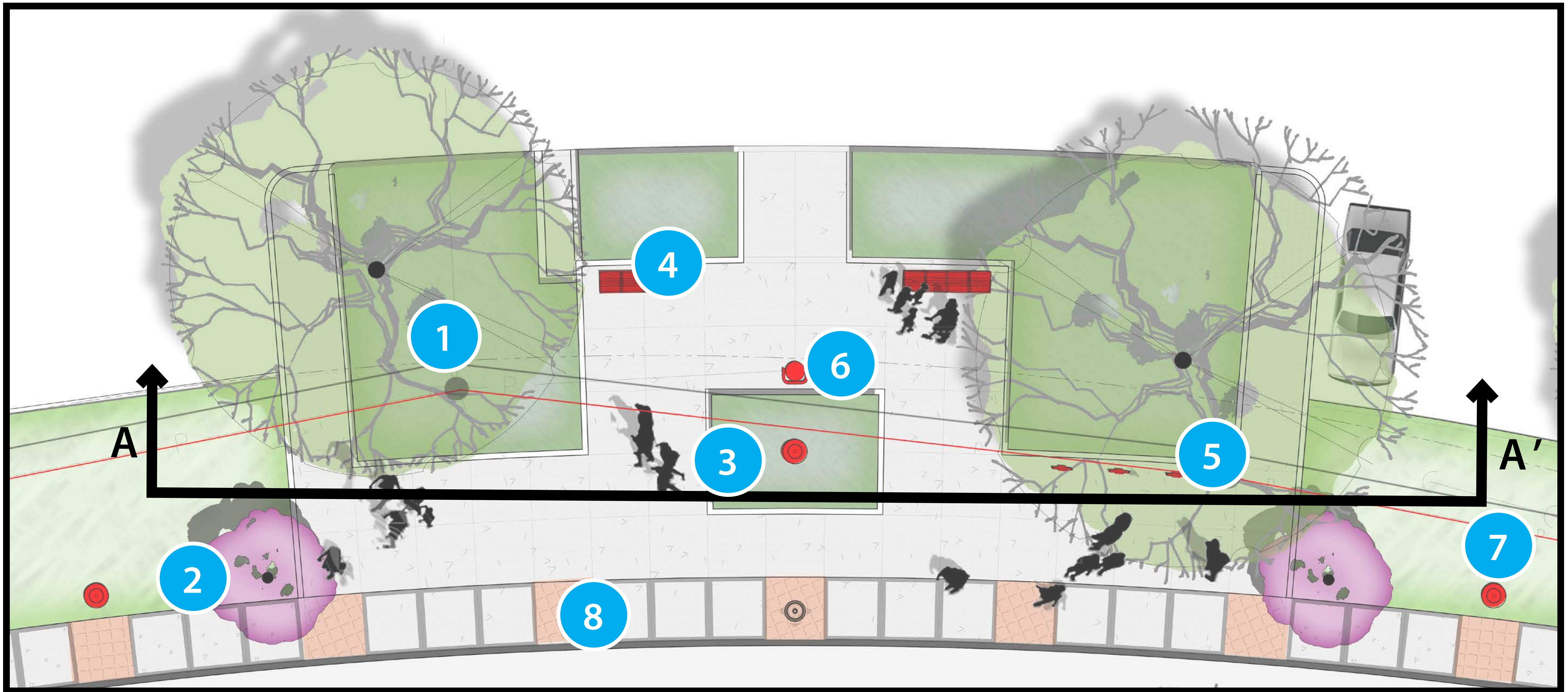
swa



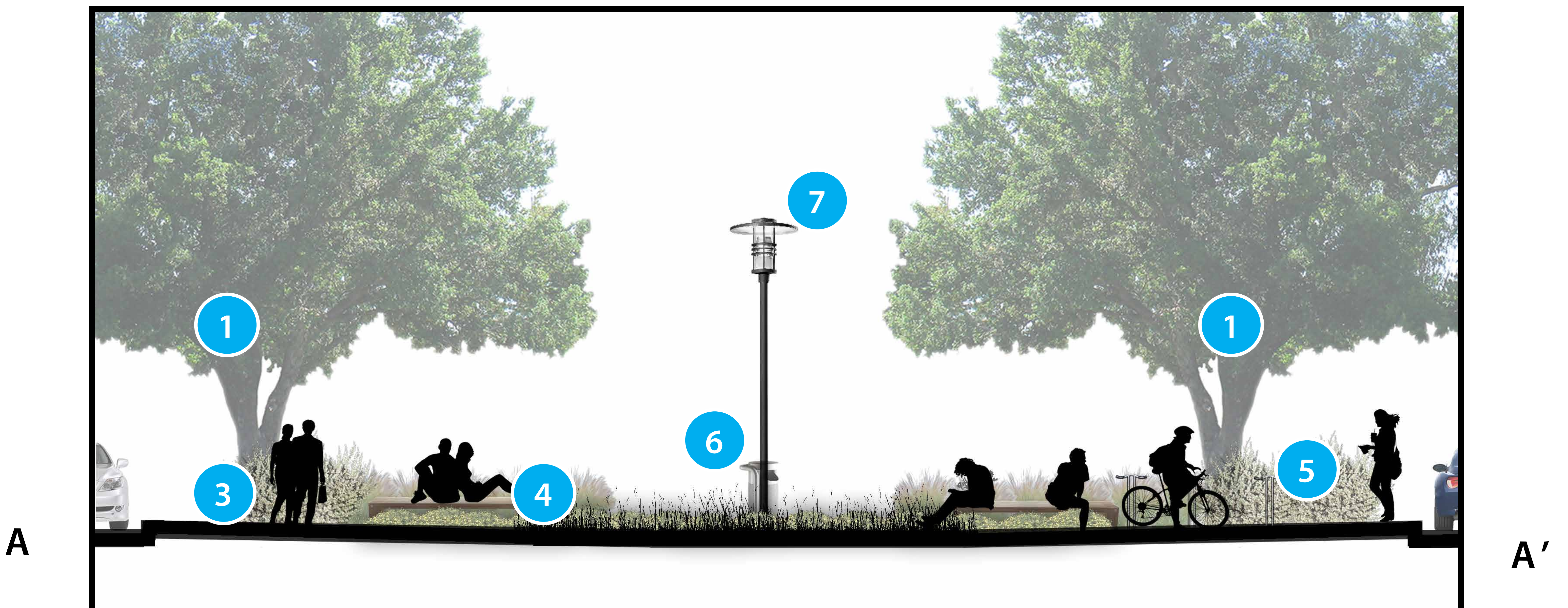
NOTE: AMENITIES CONFORM TO MMD STANDARDS



- 1 Large Shade Tree
 - 2 Flowering Ornamental Tree
 - 3 Roadway
- 4 6'-0" Concrete walk with Paver Accents
 - 5 Planting Area
 - 6 Avalon Pedestrian Light Fixture



- | | |
|-----------------------------|--|
| 1 Preserved Live Oak | 5 Pi Bicycle Rack |
| 2 Flowering Ornamental Tree | 6 Petosky Trash Receptacle |
| 3 Planting Area | 7 Avalon Pedestrian Light Fixture |
| 4 Presidio Backless Bench | 8 6'-0" Concrete walk with Paver Accents |



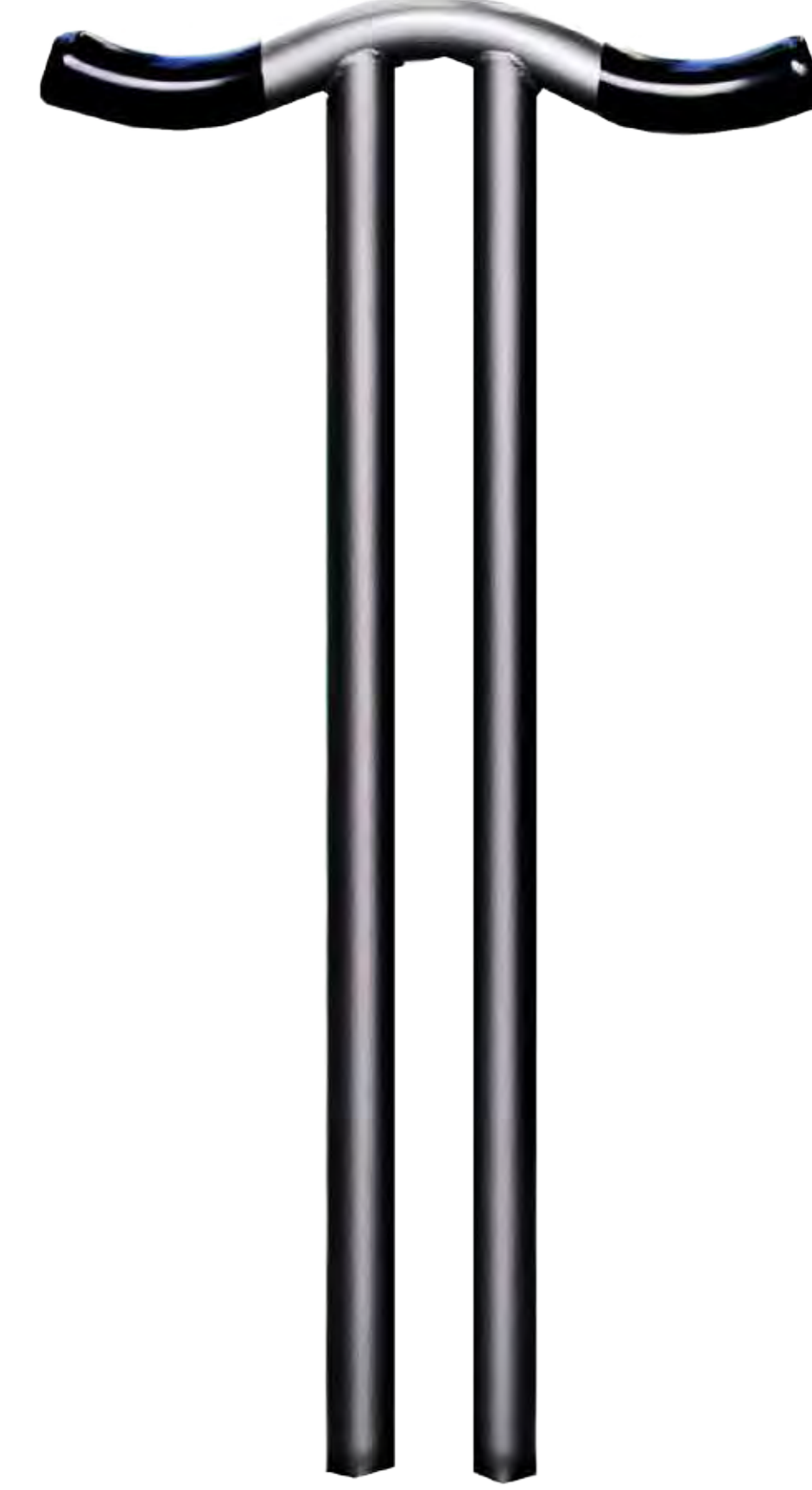
LUMPKIN ROAD | SITE FURNISHINGS



A1 hessAmerica |
Avalon Light Fixture



A2 Landscape Forms |
Petosky Trash Receptacle



A3 Landscape Forms |
Pi Bicycle Rack



A4 Landscape Forms |
Presidio Backless Bench

NOTE: AMENITIES CONFORM TO MMD STANDARDS