



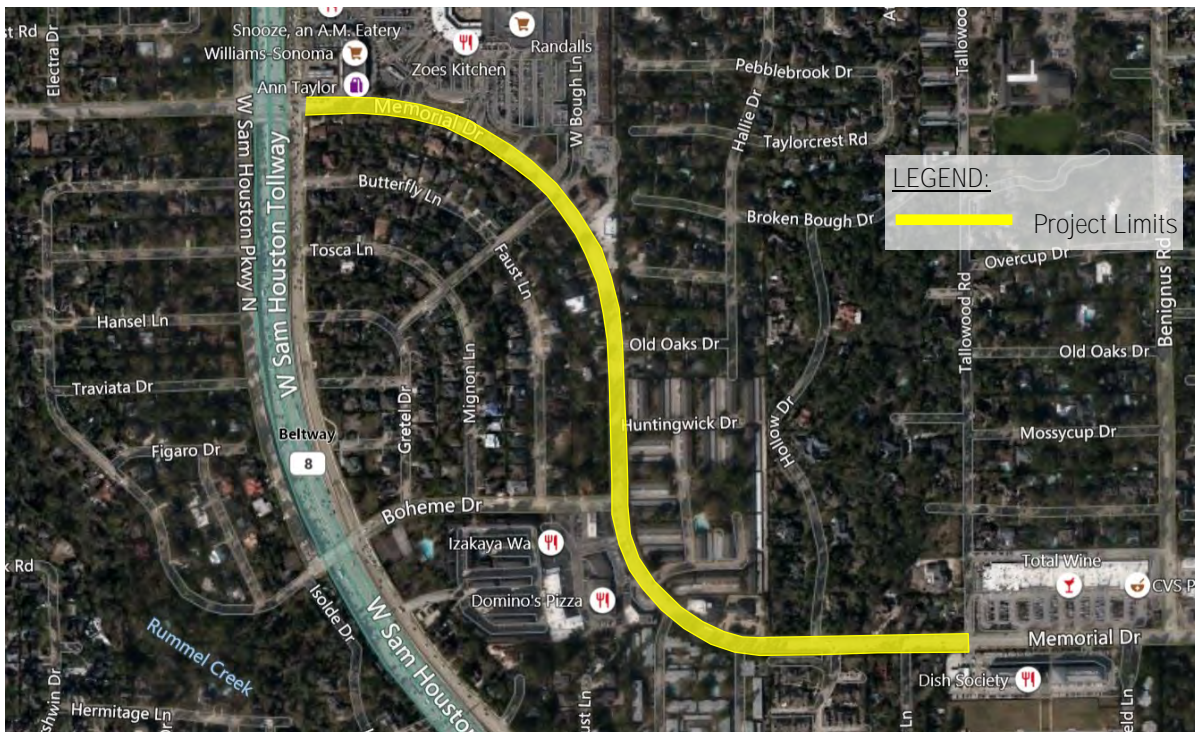
# PROGRESS REPORT— MAY 2021

## Memorial Drive Mobility and Drainage Improvements

WBS No. N-T17000-031B-7 , CSJ: 0912-72-391

### PROJECT LOCATION

The Memorial Drive improvement project is approximately 4,960 feet long, from East of Beltway 8 to East of Tallowood Road This project is located in the City of Houston within the TIRZ 17 limits.



### PROJECT DESCRIPTION:

Memorial City Redevelopment Authority (MCRA)/Tax Increment Reinvestment Zone (TIRZ) 17 on behalf of the City of Houston, and in cooperation with TxDOT is sponsoring the proposed Memorial Drive project. Memorial Drive will be reconstructed from East of Beltway 8 to East of Tallowood Drive in the City of Houston, Harris County.

Memorial Drive is a major thoroughfare that carries 17,500 vehicles per day and one of the critical capital improvement projects to be undertaken by TIRZ 17. The project proposes to improve drainage issues, mobility, access management, traffic operations, and safety within the project limits. The proposed improvements include the following:

- Improving mobility and safety by reconstructing the roadway to two 12-foot wide travel lanes in each direction with a raised median in the center of the road
- Encourage a pedestrian friendly environment by installing 8-foot wide ADA-compliant sidewalks along both sides of the road
- Upgrading subsurface public utilities
- Improve traffic operations by upgrading existing traffic signals to meet current standards
- Improve drainage by replacing the existing ditches with an upgraded storm sewer system that consists of installing varying sized reinforced concrete boxes and pipes that go up to 10-FT x 10-FT
- Improve Quality of life by installing extensive hardscape and softscape landscaping items



# Cont. PROGRESS REPORT—MAY 2021

## Memorial Drive Mobility and Drainage Improvements

WBS No. N-T17000-031B-7 , CSJ: 0912-72-391

### CONSTRUCTION TIME

- Contract time: 25 Months
- Notice to Proceed date: August 20, 2020

### CONTACT INFORMATION

Construction Management  
TxDOT—Houston District



Construction Phase Services  
Gauge Engineering, LLC



Contractor  
SER Construction Partners



### PROJECT STATUS

- 10-ft x 10-ft Storm Sewer box culverts Installation taking place
- Worked with Memorial Drive Townhouses community to modify ingress/egress operations for Rip Van Winkle Dr and Huntingwick
- Worked with Somerset community to improve access to sidewalk
- Water Line and Sanitary Sewer Work - 95% Completed

### CURRENT TRAFFIC CONTROL CONFIGURATION

- Two Lanes open
- Two-way Traffic shifted to the north and south sides of Memorial Drive. Two lanes will be maintained while work zone is on the

### PROGRESS PHOTOS



10-ft x 10-ft Storm Sewer RCB Stockpile



10-ft x 10-ft Storm Sewer RCB Installation



Water line & Sanitary line Stockpile



Traffic Control setup