

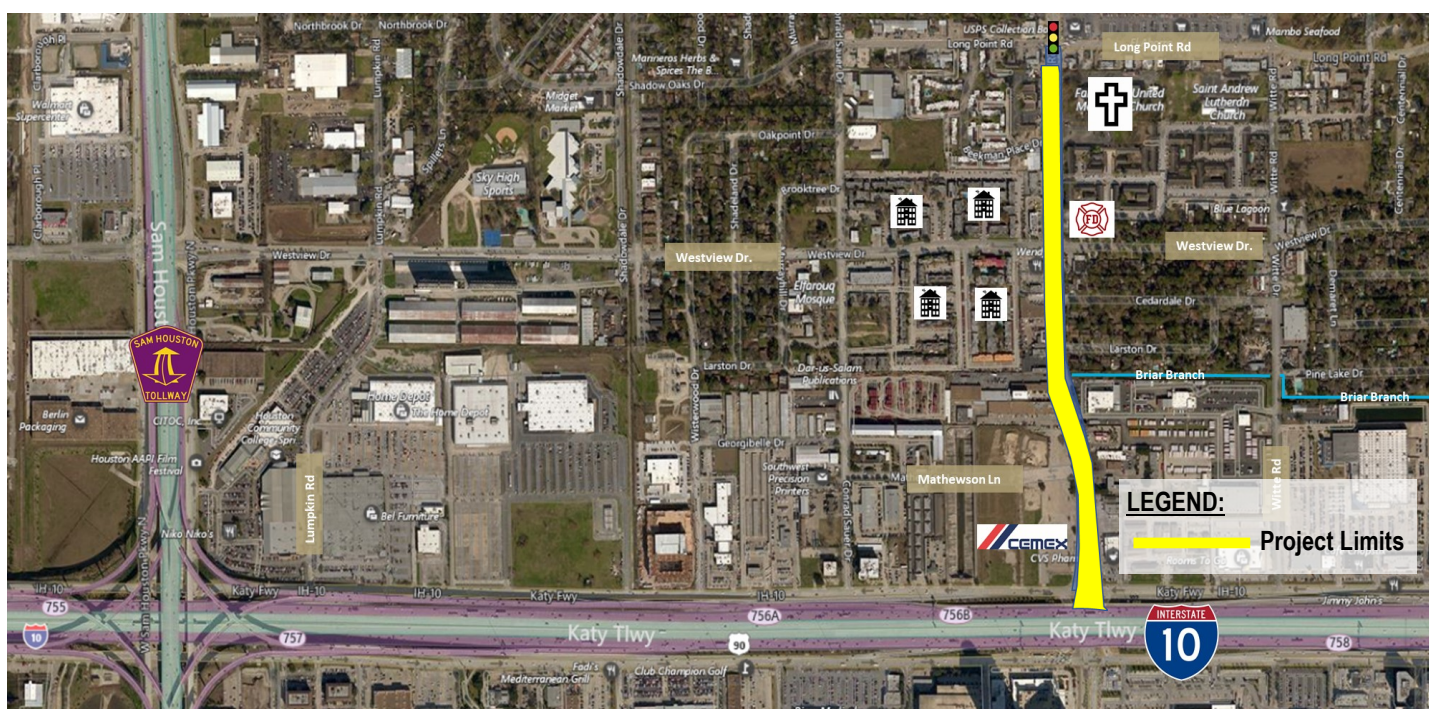
PROGRESS REPORT— FEBRUARY 2020

Gessner Road Improvements

WBS No. N-T17000-0010-3, CSJ: 0912-72-373 (T-1732A & T-1732B)

PROJECT LOCATION

The Gessner Rd improvement project is approximately 3,200 feet long, from North of Interstate 10 to south of Long Point. This project is located in City Council District A within the TIRZ 17 limits.



PROJECT DESCRIPTION:

Gessner Road is a major thoroughfare that carries approximately 42,000 vehicles per day. The Gessner Road Improvement project is one of the critical capital improvement projects to be undertaken by TIRZ 17, and will provide improved drainage, mobility and quality of life.

TIRZ 17 successfully secured federal funding to partially fund the construction of Gessner Road. Construction bids were received in early July. The lowest bidder was SER Construction Partners, LLC. SER has successfully completed multiple other TIRZ 17 projects including Lumpkin Road and the Town & Country Ln. Roundabout; both also included significant detention enhancements.

The project proposes to improve drainage issues, mobility, access management, traffic operations, and safety within the project limits. To accomplish these objectives will require full roadway reconstruction, additional storm sewer box culverts (up to 10-FT x 5-FT) will be added to supplement the existing box culvert, the aging water lines are approaching their useful service life and will be replaced, wider sidewalks with soft and hardscape amenities, adhering to the TIRZ's adopted Standards, will be added along with theater district street lighting and the traffic signal at Westview will be fully replaced.

Cont. PROGRESS REPORT—FEBRUARY 2020

Gessner Road Improvements

WBS No. N-T17000-0010-3, CSJ: 0912-72-373 (T-1732A & T-1732B)

CONSTRUCTION TIME

- Contract time: 20 Months
- Notice to Proceed date: October 28, 2019

CONTACT INFORMATION

Construction Management
TxDOT—Houston District



Engineer of Record (EOR)
Gauge Engineering



Contractor
SER Construction Partners



PROJECT STATUS

- 10-FT x 5-FT Reinforced Concrete Boxes installation continues north of Matthewson towards to Westview
- Pavement installation commenced
- Inlets, manholes and connections are being installed
- Water Line has been pressure tested, disinfected and placed in service, and customers transferred.

CURRENT TRAFFIC CONTROL CONFIGURATION

- Two northbound and southbound lanes are open
- Continuous two-way left turn lane in the center

PROGRESS PHOTOS



Forming and Rebar for pavement installation.



Pavement installation commenced.



10-FT x 5-FT RCB Installation



Stockpiled 10-FT x 5-FT RCBs