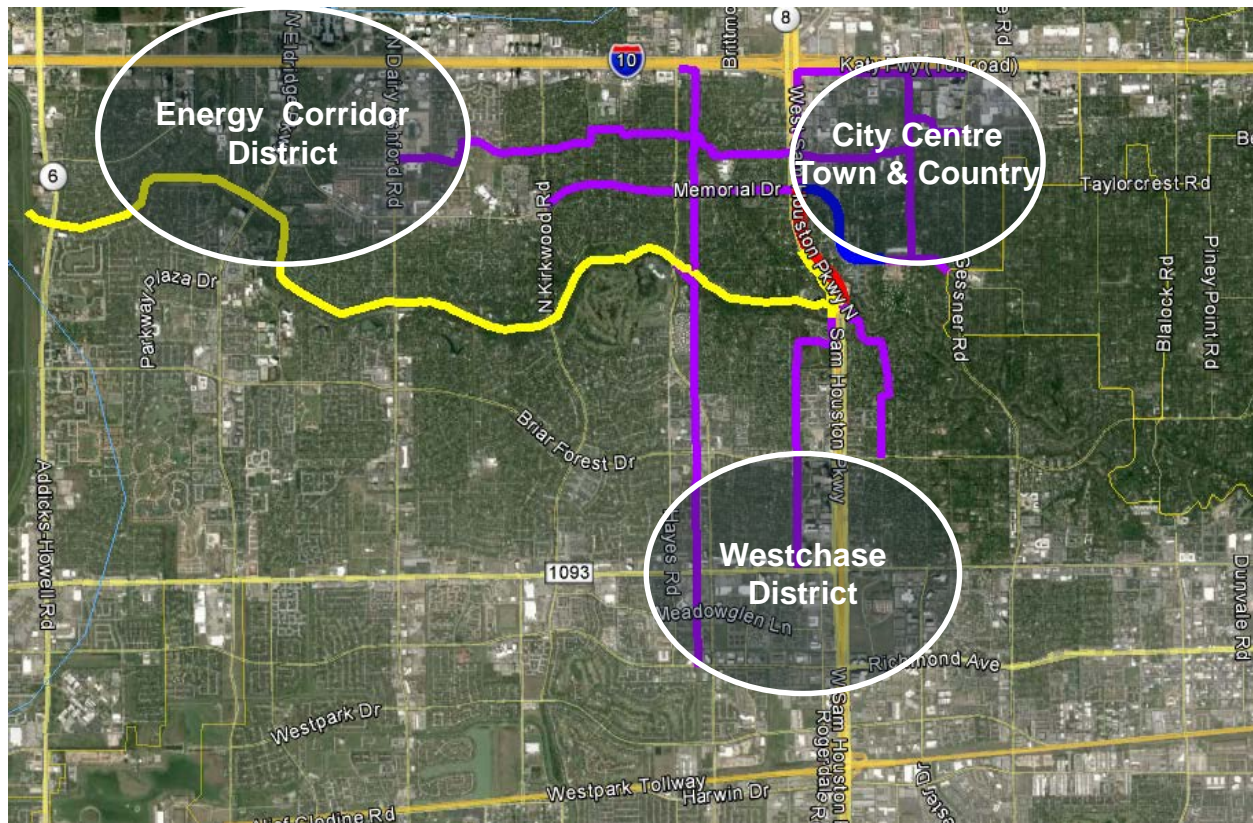


BW8 Enhanced Path Update Bicycle and Pedestrian Connections

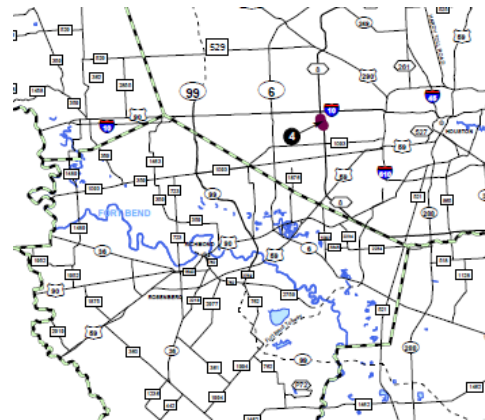
Robert Benz

Project Location



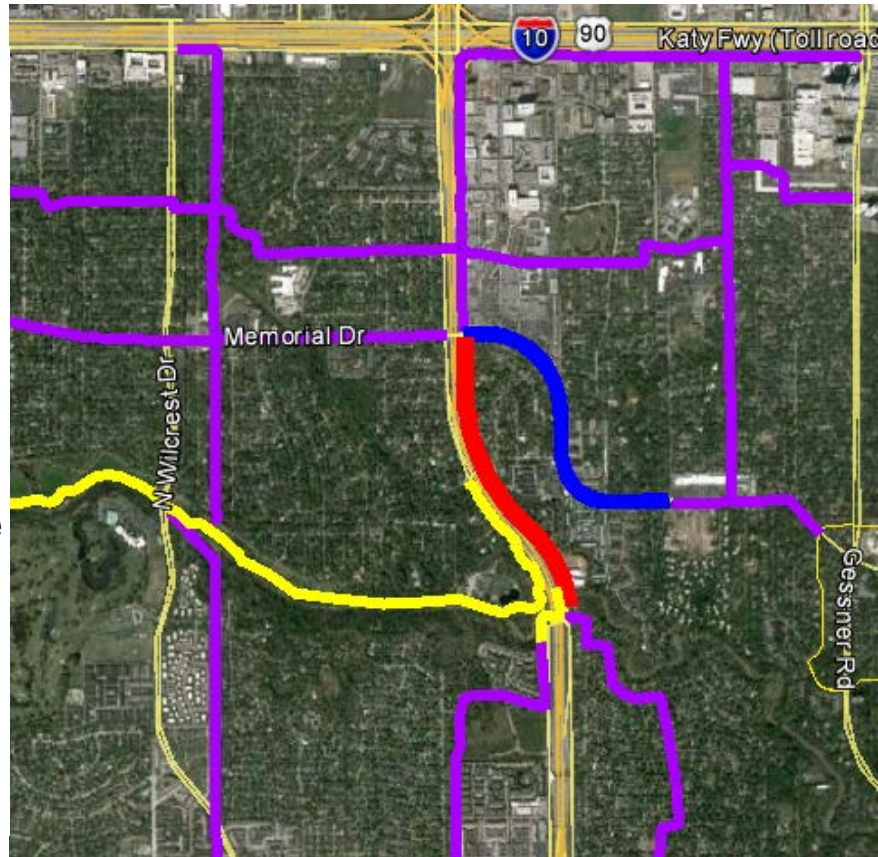
Connections

- Process
 - Focus on collaboration and partnerships
 - Best practice for future projects
- Connections to transportation networks
 - Bicycle Network
 - Pedestrian Network
 - Transit Network
- Connections to places (Jobs, Homes, Entertainment)
 - CityCentre
 - Town & Country Village
 - Energy Corridor District
 - Westchase District
- Connections to nature
 - Terry Hershey Park

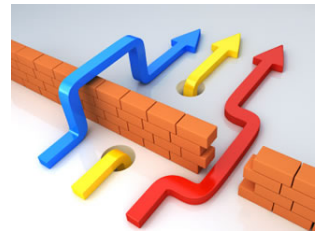


Project Scope

- By the Numbers
 - 8-foot path
 - 0.8 mile
 - \$385,700
- Amenities (Partners)
 - Buffered from Street
 - Landscaping
 - Potential Street Furniture
 - Potential Way Finding
 - Other

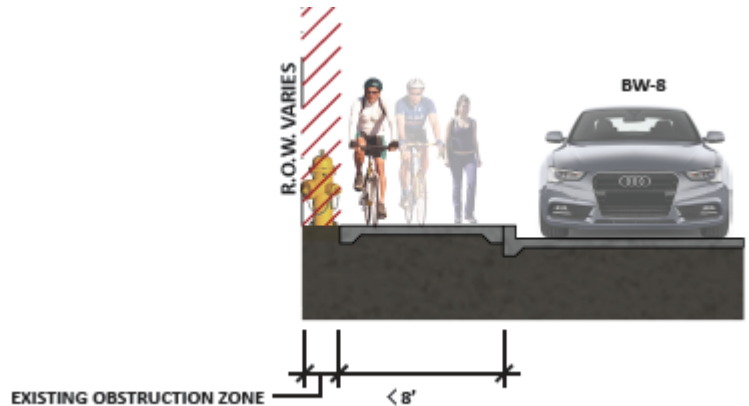
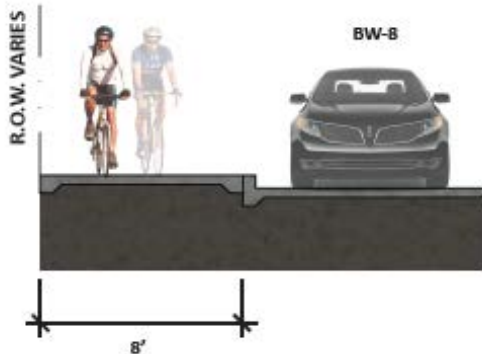


- Partners
 - The Community
 - TxDOT
 - HGAC
 - The City of Houston
 - TIRZ 17
 - Memorial District
- Time Line
 - Funding (TAP)
 - Alignment
 - Stakeholder/Community Engagement
 - Design & Engineering
 - Fall 2017 Construction
- Challenges
 - Narrow right-of-way (ROW)



Cross Section

- Constrained Typical Section
 - Existing bridge across Buffalo Bayou
 - Utilities
 - Narrow right-of-way (ROW)



Cross Section

- Typical Section (5' buffer + 8' path)



Questions?

Ana Ramirez
Transportation Planning
TxDOT-Houston District
Ana.RamirezHuerta@txdot.gov

Robert J. Benz, P.E.
Memorial Super Neighborhood
Infrastructure Chair
r-benz@tamu.edu